

Service
Service
Service



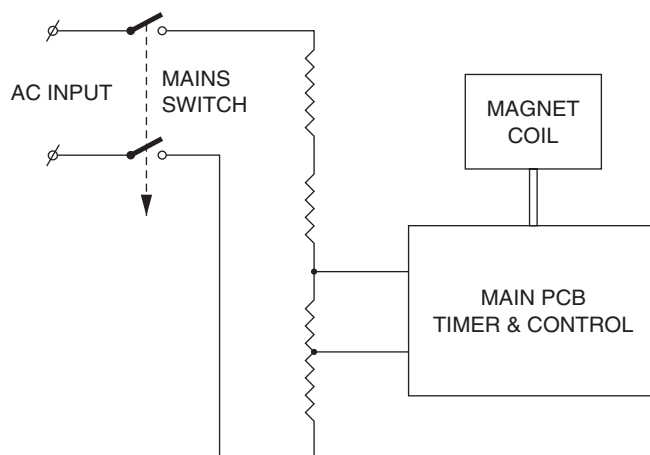
Philips Domestic Appliances and Personal Care

Service Manual

SAP coding HD 2602

PRODUCT INFORMATION

Voltage	: 220 - 240 V
Frequency	: 50 - 60 Hz
Power consumption	: 800 W
Coloursetting	: Chromium and white



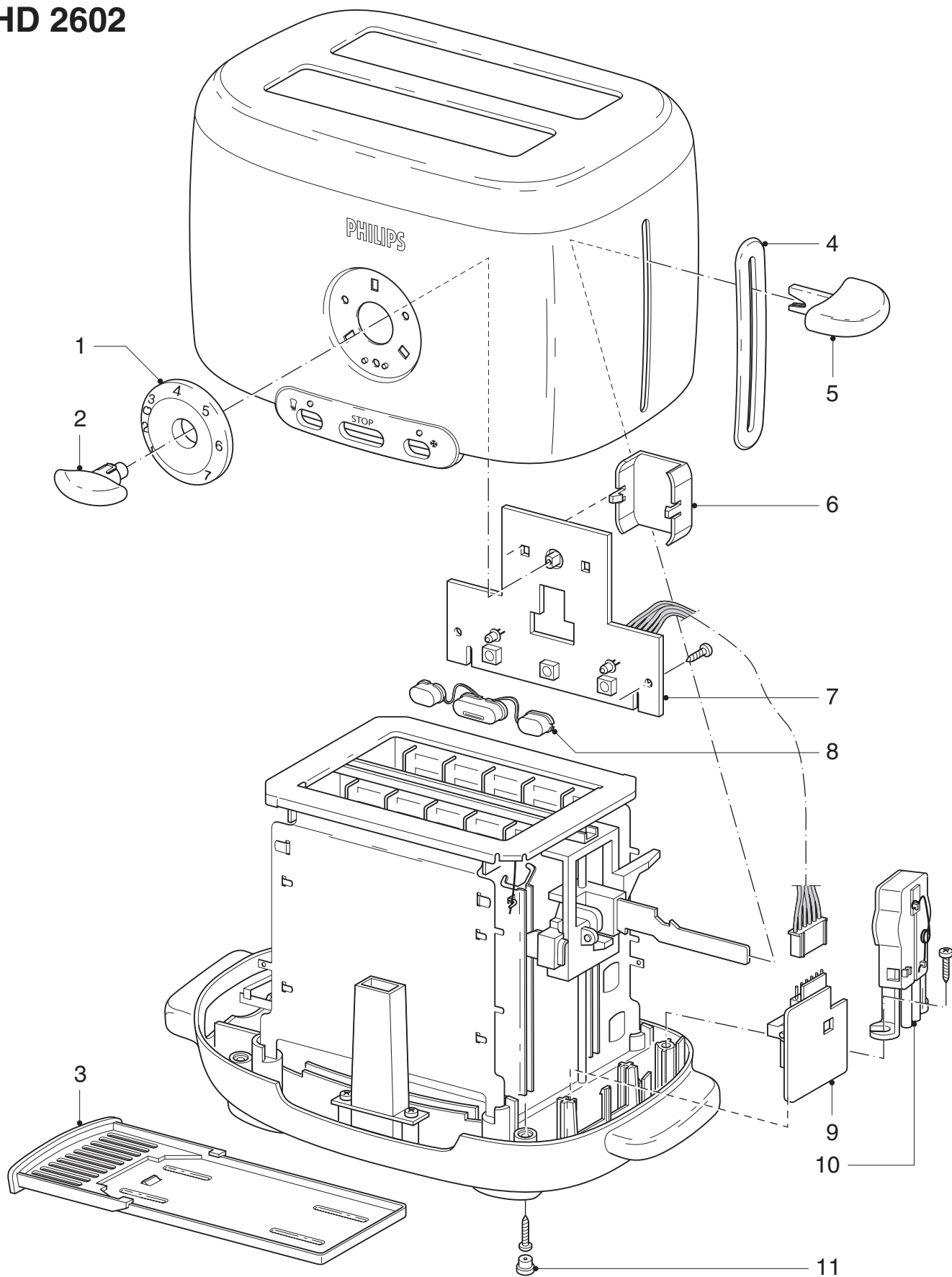
SERVICE INFORMATION

To open the appliance, first remove the 4 rubber feet Item (11).
After the rubber feet has been removed, a special screwdriver is needed.
The code number to order this special screwdriver is: 9965 000 15315

This product meets the requirements regarding interference suppression on radio and TV.

After the product has been repaired, it should function properly and has to meet the safety requirements as officially laid down at this moment.

HD 2602



Pos	Description		Service code
1	Control knob cover	White	9965 000 14814
2	Control knob	White	9965 000 14815
3	Crumtray complete	White	9965 000 14816
4	Push slot	White	9965 000 14817
5	Push knob	White	9965 000 14818
6	PCB cover		9965 000 14807

Pos	Description		Service code
7	Function PCB assembly		9965 000 14819
8	Future button (3x)	White	9965 000 14820
9	Main PCB (Magnet unit)		9965 000 14821
10	Mains switch assy		9965 000 14811
11	Rubber foot	White	9965 000 14812