

Service
Service
Service



Domestic Appliances and Personal Care

Service Manual

PRODUCT INFORMATION

SAP coding HD 3522

Functions, features and operational aspects:

Switch: 4 functions	○	off
	⋈	cool air
	●	1000W
	●●	2000W
Thermostat		
Frost guard	❄	
On/off power light		
Overheating protection		
Cord storage		
Voltage/frequency	:	230V/50Hz
Power consumption	:	1000-2000 Watt
Safety	:	Insulation class <input type="checkbox"/>

INSTRUCTIONS FOR REPAIR

For disassembly you need:

- 1x screwdriver Triwing Gr 1
- 1x screwdriver PB no 192 Nr 0
- 1x screwdriver PB no 192 Nr 2

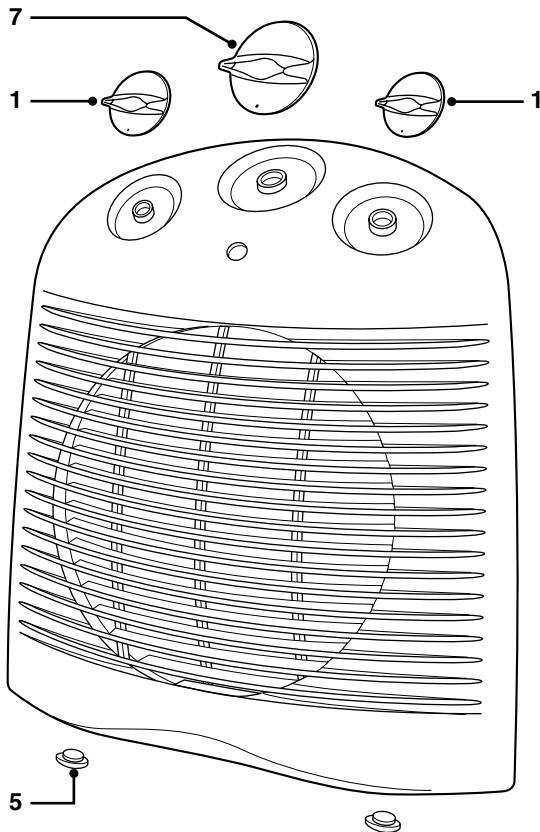
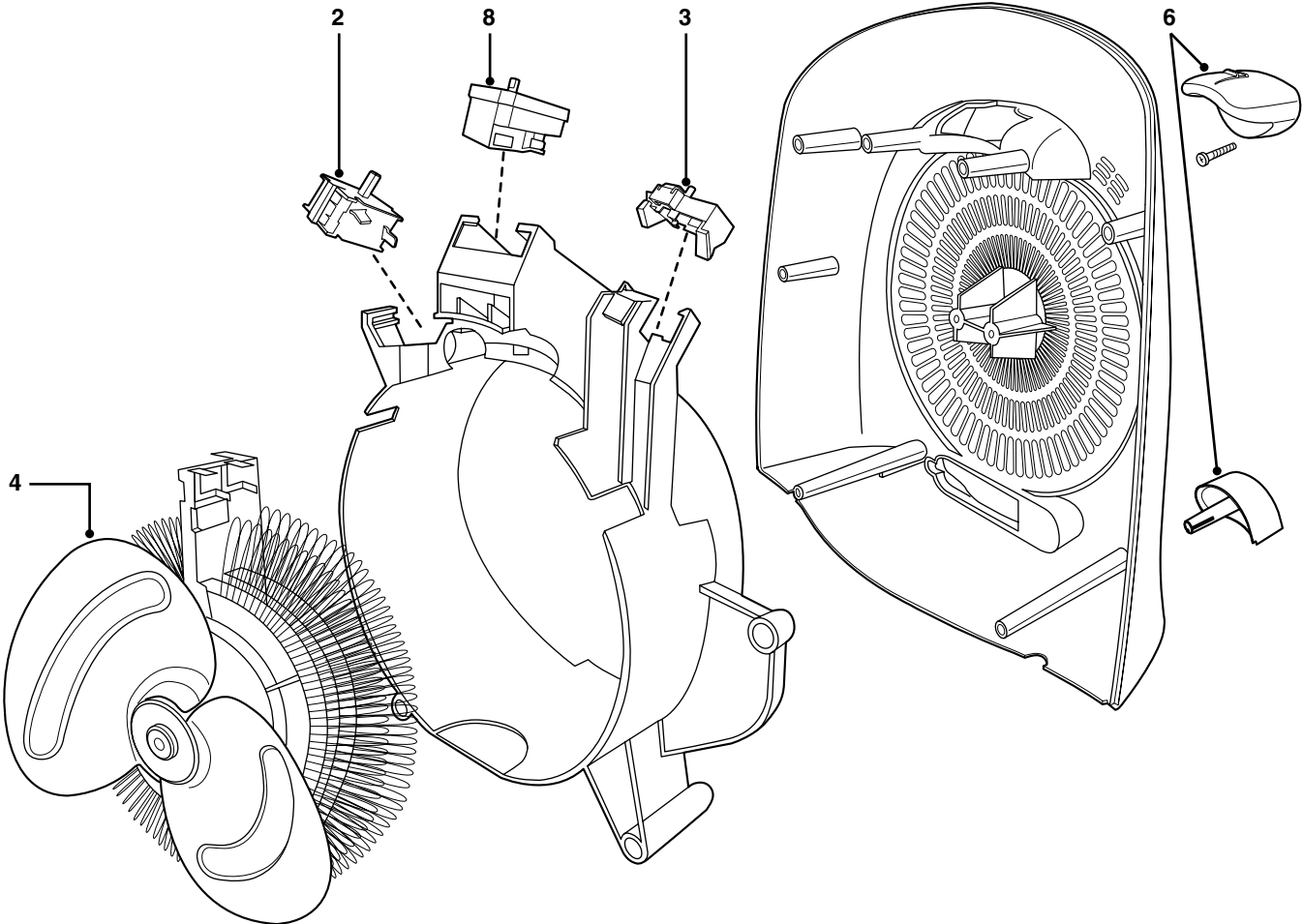
PRODUCTS MEETS THE REQUIREMENTS REGARDING
INTERFERENCE SUPPRESSION ON RADIO AND TELEVISION.

- AFTER THE PRODUCT HAS BEEN REPAIRED IT SHOULD
FUNCTION PROPERLY AND HAS TO MEET THE SAFETY
REQUIREMENTS AS LAID DOWN OFFICIALLY ESTABLISHED
AT THIS MOMENT.



PHILIPS

HD 3522/A



1	9965 000 03302	Knob
2	9965 000 03315	Switch
3	9965 000 03316	Thermostat assy
4	9965 000 03318	Fan assy
5	9965 000 03317	Foot
6	9965 000 03323	Wall bracket assy
7	9965 000 03322	Knob switch timer
8	9965 000 03321	Switch timer
***	4222 000 93020	DFU

GBR, FRA, DEU, NLD,
SPA, PRT, ITA, GRC,
DNK, NOR, SWE, FIN