

Service
Service
Service



Philips Domestic Appliances and Personal Care

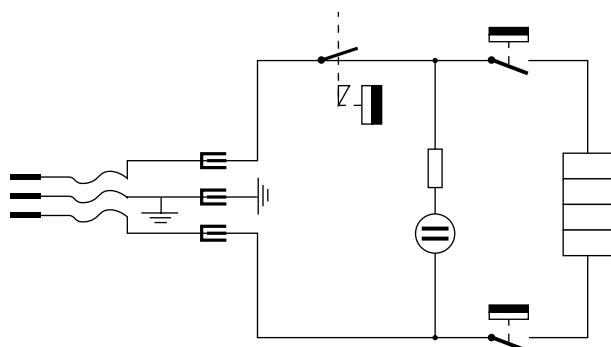
Service Manual

PRODUCT INFORMATION

- This product meets the requirements regarding interference suppression on radio and TV.
- After the product has been repaired, it should function properly and has to meet the safety requirements as officially laid down at this moment.

TECHNICAL INFORMATION

- Voltage : 220 - 240 V
- Frequency : 50 - 60 Hz
- Power consumption : 2000 - 2400 W
- Contents Kettle : 1700 cc
- Coloursetting : Blue
- SAP coding : HD4659/70



REPAIR INSTRUCTIONS

- De-scaling

Fill the kettle with water up to three-quarters of the maximum level indication and press the on/off switch. After the kettle has switched itself off, add white vinegar (8% acetic acid) or an appropriate descaler up to the maximum level indication.

Leave the solution in the kettle overnight.

Empty the kettle and rinse the inside thoroughly.

Repeat this procedure if there is still some scale left in the kettle.

- Cleaning filter

Clean the filter by rinsing it under a running tap.

If necessary, you can use a soft nylon brush.

The scale filter can also be cleaned in the dishwasher or clean the filter by de-scaling it in the same way as the kettle.

Let the filter soak in a cup of warm water with some white vinegar or an appropriate descaler.

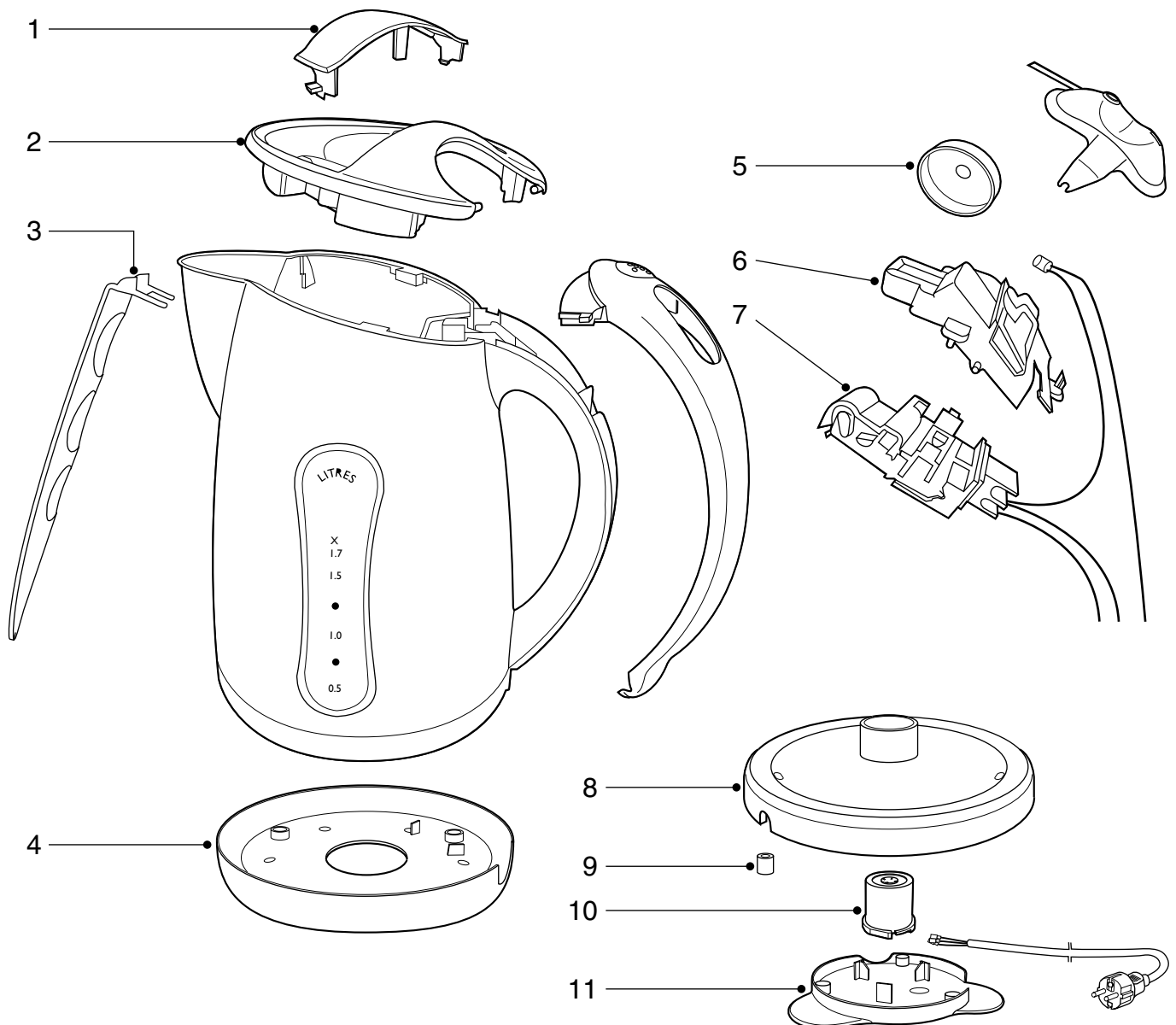
Take the filter out of the cup and rinse it thoroughly.

ASSEMBLY & DISASSEMBLY ADVICE

- No specific issues

OPTIONAL (accessories)

- No specific issues



Pos	Service code	Description	
1	4213 247 20110	Latch	Deep purple
2	4213 247 20100	Lid	Blue
3	4213 248 44750	Filter	White
4	4213 247 20090	Element cover	Deep purple
5	4213 248 44620	Bell	
6	4213 247 46420	Steam guide	
7	4213 258 94290	Switch assy	
8	4213 247 20150	Base upper	Blue
9	4213 247 05250	Foot	
10	4213 258 93380	Connector socket CS4	
11*	4213 247 48770	Base lower	Natural

* not available in the right colours