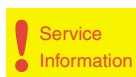


Service
Service
Service



Philips Domestic Appliances and Personal Care

Service Manual

SAP coding GC 6004

PRODUCT INFORMATION

Feataures : optinox sole plate
boiler capacity 1 litre
length steam hose 1,9 metre
length cord set 1,9 metre
maximum steam output 80 gr/min
steam ready indicator

Voltage : 220-240 Volt

Frequency : 50-60 Hz

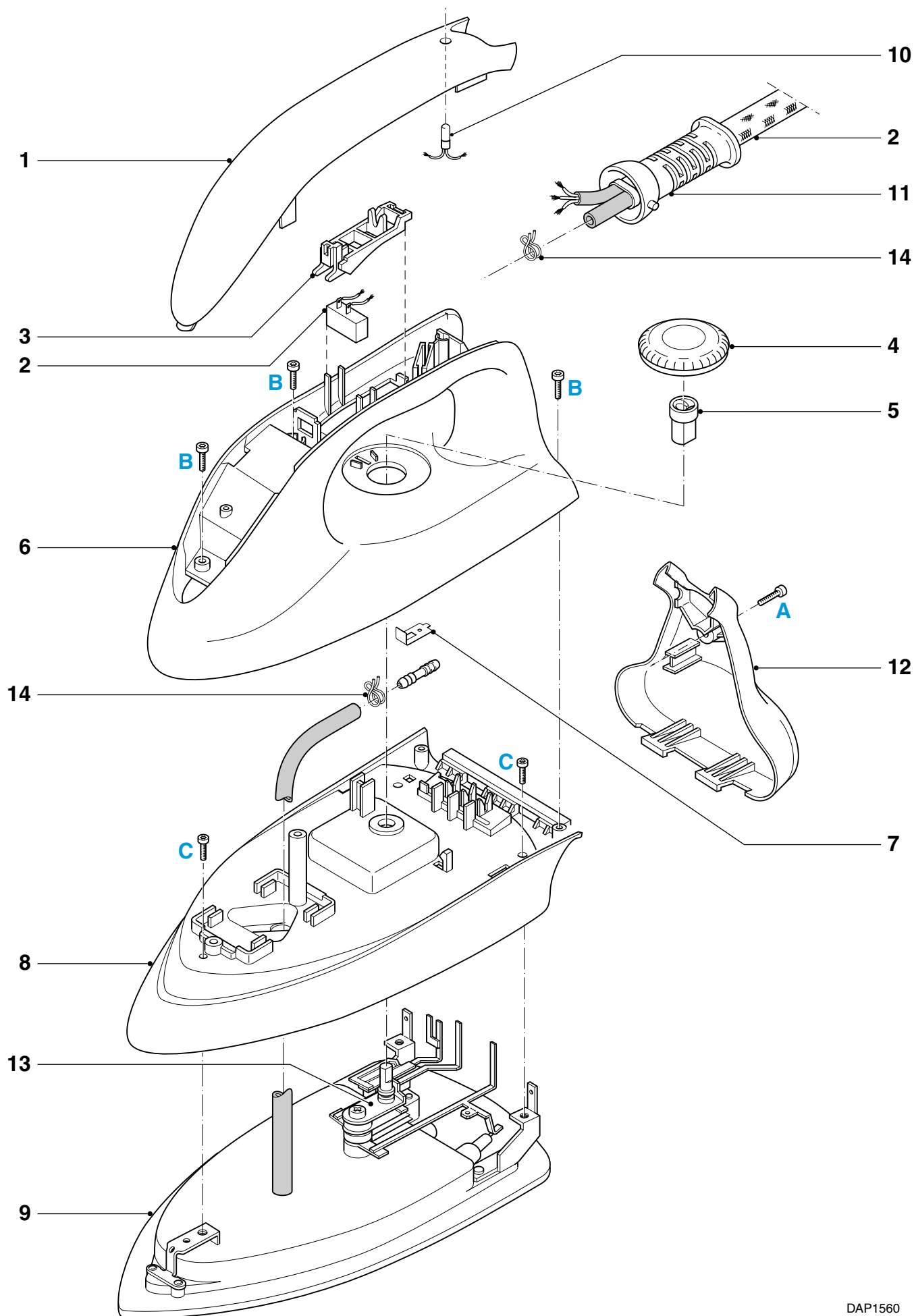
Power consumptium : Boiler : 1200 Watt
Pressure : 3,5 bar
Iron : 800 Watt

Product meets the requirements regarding interference suppression on radio and television.

- After the product has been repaired, it should function properly and has to meet the safety requirements as laid down officially established at this moment.

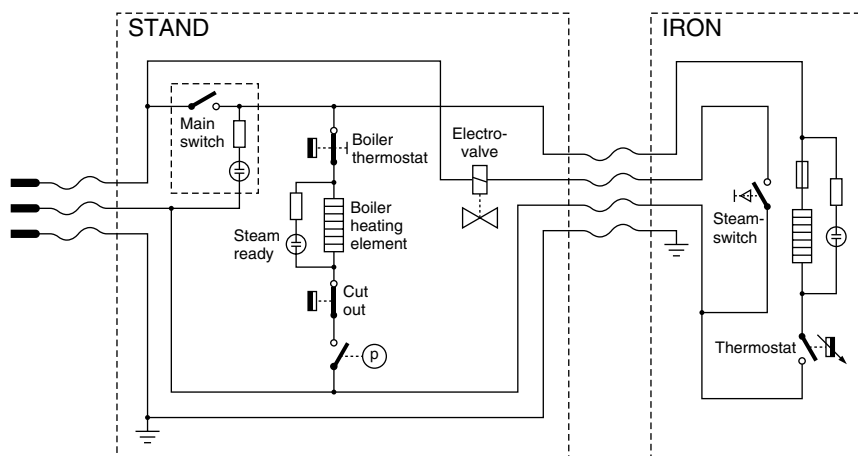


EXPLODED VIEW IRON



PARTS LIST IRON

Pos	Service Nummer	Description
1	9965 000 08140	Iron inlay
2	9965 000 08141	Intermediate cable + microswitch
3	9965 000 08184	Electro valve trigger
4	9965 000 08185	Thermostat dial
5	9965 000 01682	Thermostat joint
6	9965 000 08186	Iron handle
7	4822 492 71445	Rattle
8	9965 000 08187	Iron skirt
9	9965 000 08188	Soleplate unit
10	9965 000 01686	Iron lamp
11	9965 000 01687	Ball swivel
12	9965 000 08189	Iron back part
13	9965 000 01690	Iron thermostat
14	4822 492 71001	Spring clamp

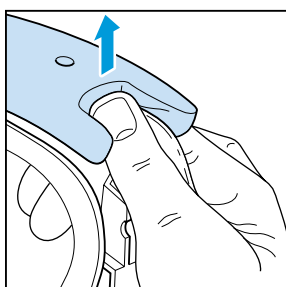
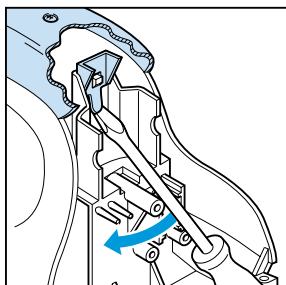


DISASSEMBLY ADVISE IRON

BACK PLATE 12

remove **SCREW A**

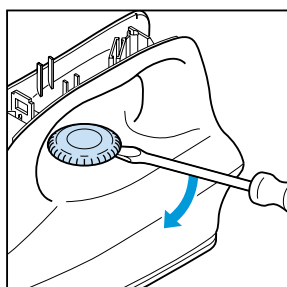
INLAY 1



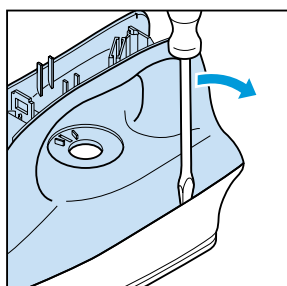
remove **LAMP 10**

remove **MICRO SWITCH 2**

HANDLE 6



remove **THERM. DIAL 4**
remove **SCREW B (4x)**



unlock **HANDLE** carefully

SKIRT 8

remove **ELECTRICAL WIRES**

remove **EXTENSION PIECE 5**

remove **SPRING CLAMP FROM STEAM HOSE**

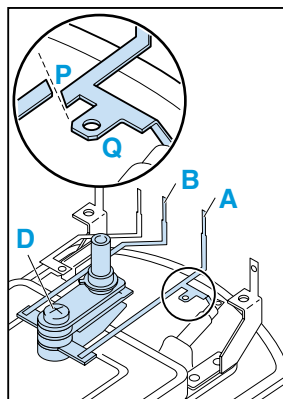
remove **SCREW C (3x)**

Bend back the contact points

THERMOSTAT 13 ONLY

cut **CONDUCTOR A**
at location P

remove **SCREW D**

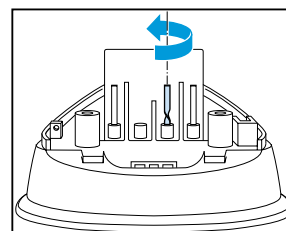


ASSEMBLY REQUIREMENTS THERMOSTAT 2

Instead of metal conductor A, the new thermostat has a wire with AMP clamp.

After fixing screw D, connect the AMP clamp to tag Q.

After assembling SKIRT 8 ALWAYS turn conductor B through 180 degrees.



ADJUSTMENT AND CONTROLS

Thermostat 13

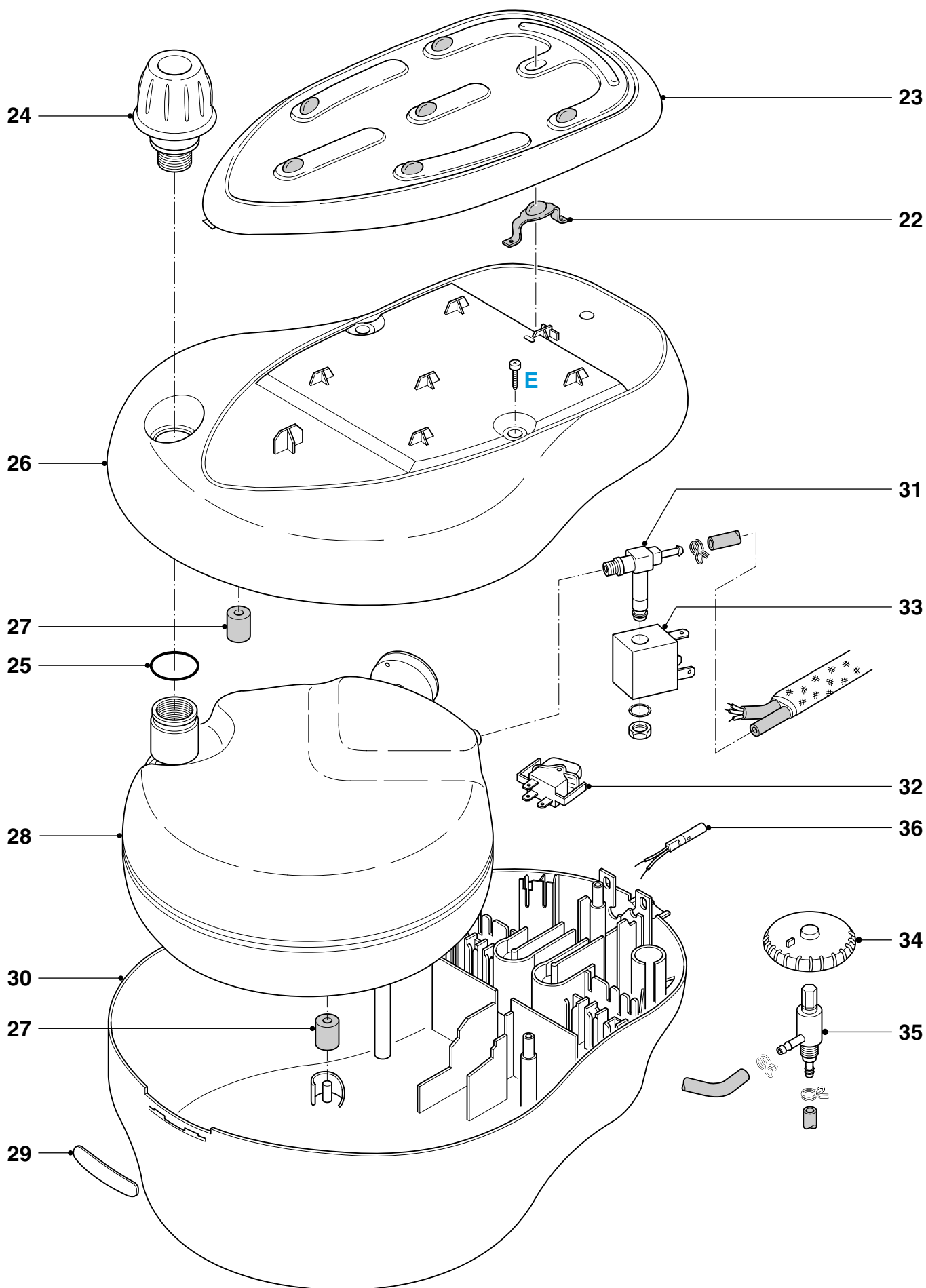
Thermostat (13) supplied as a spare part or fitted to the sole plate (9) has already been adjusted by the supplier and secured by glue.

To avoid disfunction of the iron , NEVER readjust the thermostat.

NOTE :

For opening you need a Torx screwdriver 362 TR T20 x 100.

EXPLODED VIEW STAND



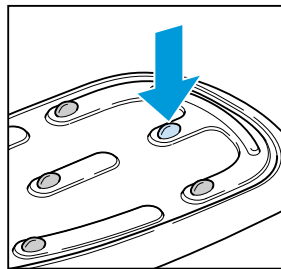
PARTS LIST + DISASSEMBLY ADVICE STAND

Pos	Service Nummer	Description
22	9965 000 08193	Tray rubber foot for fixation
23	9965 000 08194	Complete tray
24	9965 000 08195	Safety cap for boiler
25	9965 000 01782	Filling hole gasket for alu boiler
26	9965 000 08239	Superior stand printed
27	4822 462 71999	Boiler rubber feet
28	9965 000 08240	Complete boiler
29	9965 000 08201	Locket insert
30	9965 000 08202	Inferior stand
31	9965 000 01790	Filter
32	9965 000 08203	Main switch
33	4822 218 11561	Electrovalve
34	9965 000 08241	Steam dial
35	9965 000 01900	Stream regulator
36	9965 000 01902	Steam ready light

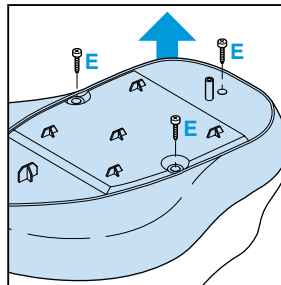
ADJUSTMENT AND CONTROLS

- To avoid leakage of the sealings and damage to the components in and on the boiler, **NEVER** clean the boiler with vinegar, a descaling agent or other chemicals.
- The boiler doesn't contain serviceable parts. Never disassemble the boiler body and /or components on and in the boiler.
- **ALWAYS REPLACE THE BOILER (28) WHEN:**
 - * the mechanical safety valve (24) has been activated.
 - * the boiler thermostat or hand - resettable safety thermostat are open, because the boiler has been subjected to too high temperatures.
 - * the electrovalve (33) fails or the sieve is soiled with scale.
- After the product has been repaired, it should function properly and has to meet the safety requirements as laid down and officially established at this moment.

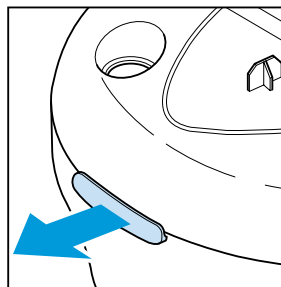
OPEN THE STAND



pressure fixation rubber through the tray



remove **SCREW E (3 x)**



remove **LOCKED INSERT 29**

NOTE:

OPEN NOW THE STAND.
DON'T WORRY IF THE SNAPS AT THE SIDE WILL BE BROKEN.
THEY ARE ONLY FOR THE ASSEMBLY.
THE STAND REMAINS CLOSE WITHOUT THESE SNAPS.