



Philips Domestic Appliances and Personal Care

Service Manual

PRODUCT INFORMATION

- This product meets the requirements regarding interference suppression on radio and TV.
- After the product has been repaired, it should function properly and has to meet the safety requirements as officially laid down at this moment.

TECHNICAL INFORMATION

- Voltage : 220 - 240 V
- Frequency : 50 - 60 Hz
- Power consumption : 1850 - 2200 W
- Contents Kettle : 400 - 1700 cc
- Coloursetting : Translucent white/Dutch blue
- SAP coding : HD4642/51

DISASSEMBLY- AND RE-ASSEMBLY ADVISE

- **Handle housing removal**
To remove the handle housing to reach to the inner parts, detach with a simple screwdriver the two plastic snap connections at the underside of the body. Pull at the handle until the snap connections are loose. Move the handle downwards to remove it from the body.

REPAIR INSTRUCTION

- **Electrical circuit**
When the appliance does not work, check the electrical Circuit.

- De-scaling

Fill the kettle with water up to three-quarters of the maximum level indication and press the on/off switch. After the kettle has switched itself off, add white vinegar (8% acetic acid) or an appropriate descaler up to the maximum level indication.

Leave the solution in the kettle overnight.

Empty the kettle and rinse the inside thoroughly.

Repeat this procedure if there is still some scale left in the kettle.

- Cleaning filter

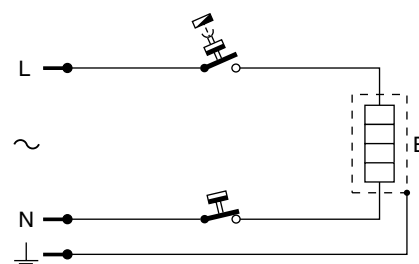
Clean the filter by rinsing it under a running tap. If necessary, you can use a soft nylon brush.

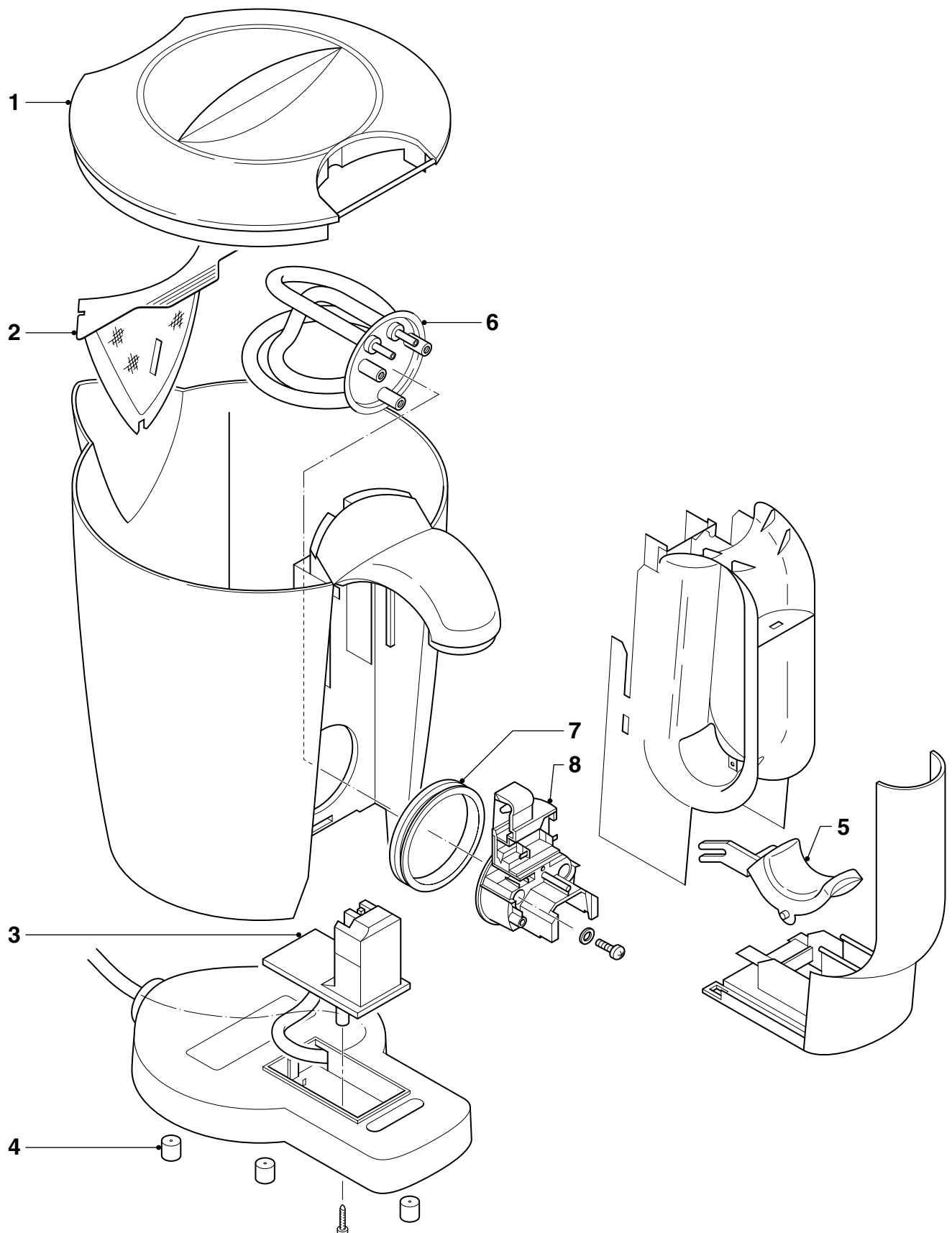
The scale filter can also be cleaned in the dishwasher or clean the filter by de-scaling it in the same way as the kettle. Let the filter soak in a cup of warm water with some white vinegar or an appropriate descaler.

Take the filter out of the cup and rinse it thoroughly.

OPTIONAL (accessories)

- Commercial trade number Filter: HD4960 (White)





Pos	Service code	Description
1	4213 247 50050	Lid Dutch blue
2	4213 248 40680	Filter white
3	4213 258 94450	CS21 connector
4	4213 247 05250	Foot
5	4213 263 30410	Switch white printed

Pos	Service code	Description
6	4213 258 94470	Cu/Ni element 220 V / 2.2 kW
	4213 258 94460	S/S element 220 V / 2.2 kW
7	4213 247 05340	Seal
8	4213 258 93480	Controller J10/X37 assy