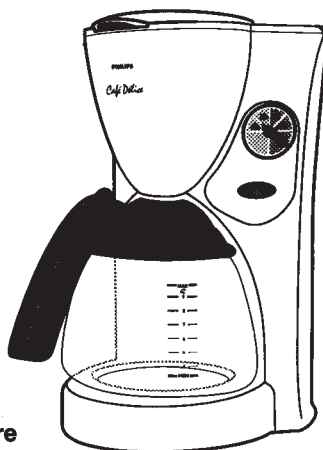


Service Service Service



Philips Domestic Appliances and Personal Care

Service Manual

PRODUCT INFORMATION

Voltage : 100, 120, 230V
Frequency : 50 - 60Hz
Power consumption : 850 + 550W
Coloursetting : various

MSH coding
8827 602 00000

SERVICE INFORMATION

Thermostat switch-off temp : 140°C
Thermal fuse cut-off temp : 298°C

REPAIR INSTRUCTIONS

1. Electrical circuit

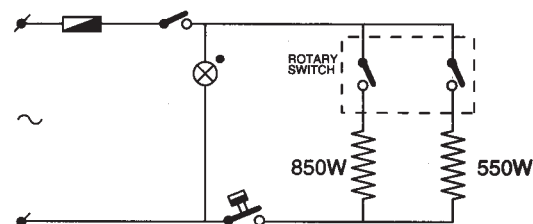
When the appliance does not work, check the electrical circuit. If the thermal fuse or thermostat prove defective, the complete pump unit has to be replaced.

2. De-scaling

If the water system is nearly or less clogged by scale then operate the coffeemaker a few times with vinegar or with a 10-15% solution of either vinegar-acid, citric acid or tartar-acid, into cold tap water.

Do not use other de-scaling agents as these may harm the appliance.

If this procedure does not restore the function, then switch off the coffeemaker when the acid has passed through during appr. 3 min. Keep the appliance in this condition overnight and continue/repeat the cleaning operation. After the de-scaling procedure, operate the coffeemaker twice with tap water in order to rinse away any residual substances.



3. Pump unit removal

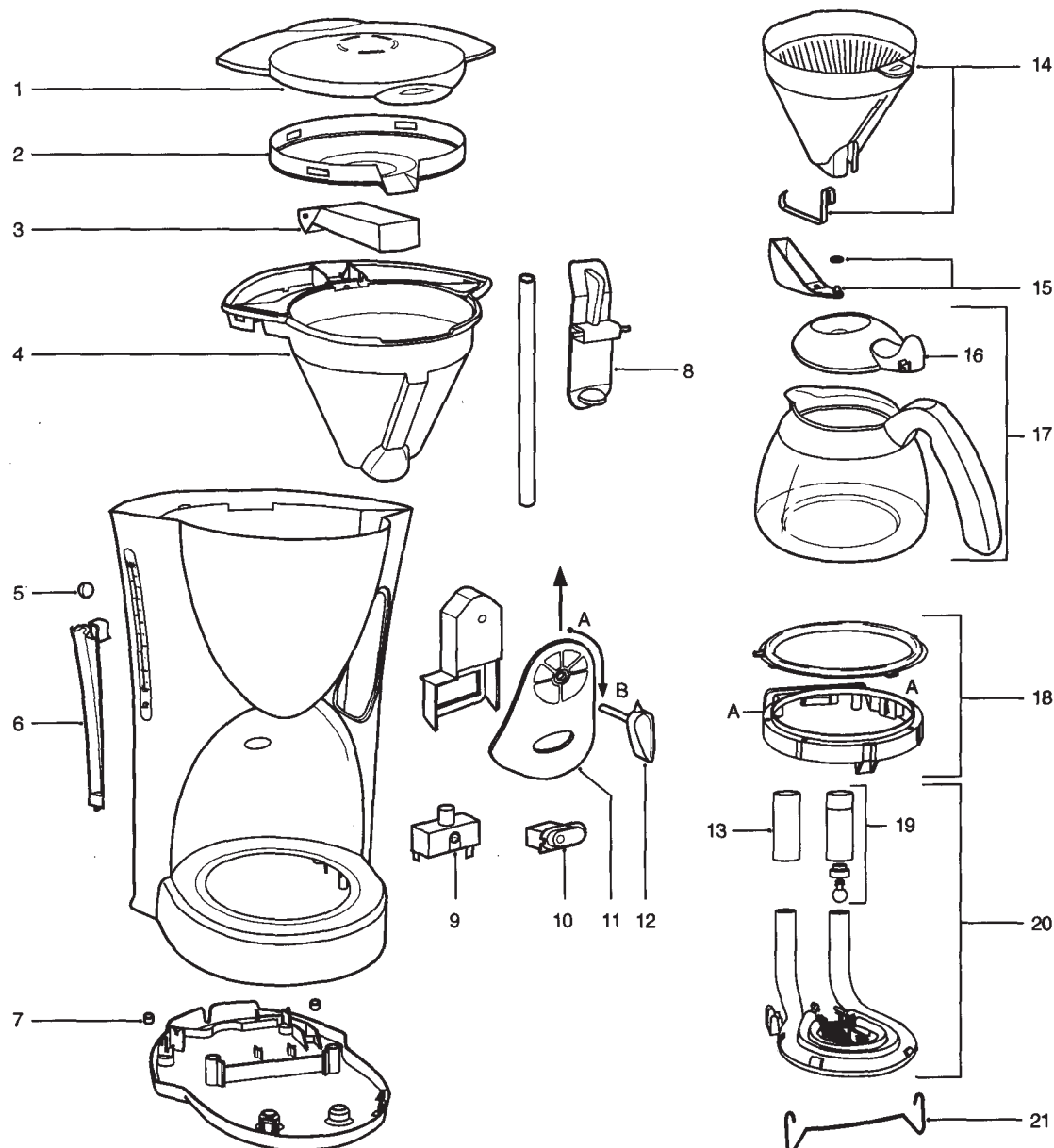
To separate the pump unit (item 20) from the hotplate unit (item 18), the two plastic snaps at place A have to be loosened. Then the pump unit can be lifted out easily.

4. Exchanging the switch unit

Remove the panel (11) by carefully pushing a small screwdriver into the chink at point A and moving it towards to point B (see exploded view). Do not damage the housing. If the panel has been damaged, get a new one.



HD 7602/A



1	4822 442 00875	Tank lid	ivory	12	4822 410 11106	Switch knob	aubergine
-	4822 442 00876	"	aubergine	-	4822 410 11105	"	rose
2	4822 466 11499	Spout disc	aubergine	13	4822 532 21371	Hose	
3	4822 529 10384	Spout	aubergine	14	4822 480 10168	Filter	aubergine 1)
4	4822 256 10358	Rim/filterholder	ivory	15	4822 360 10284	Drip stop unit	
-	4822 256 10357	"	aubergine	16	4822 442 00877	Jug lid	aubergine
5	4822 450 10314	Float	orange	17	4822 418 10234	Jug 1200cc (+16)	aubergine 2)
6	4822 450 10312	Window back wall	1200cc	18	4822 466 11508	Hot plate unit	
7	4822 462 40374	Foot		19	4822 360 50864	Hose valve unit	
8	4822 402 10708	Jug lever	aubergine	20	4822 259 10241	Pump unit 1400W	230V
9	4822 273 10333	Rotary switch	4 pos	-	4822 259 10242	" " "	120V
10	4822 276 13857	Switch on/off	220-250V	-	4822 259 10243	" " "	100V
-	4822 276 13858	"	100-120V	21	4822 492 71174	Wire spring	
11	4822 466 11733	Panel	ivory				
-	4822 466 11731	"	aubergine				

- 1) Optional part for use as an insert in item 14:
 4822 480 50479 Permanent filter nylon
 4822 480 10107 Permanent filter stainless steel
- 2) Commercial trade number of the jug HD 7927