

PARTS CATALOG



Canon

IXY DIGITAL

C83-1006

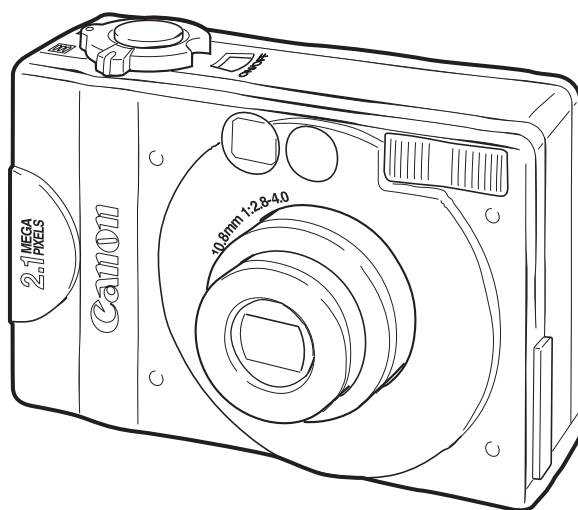
PowerShot S100 DIGITAL ELPH

C83-1001

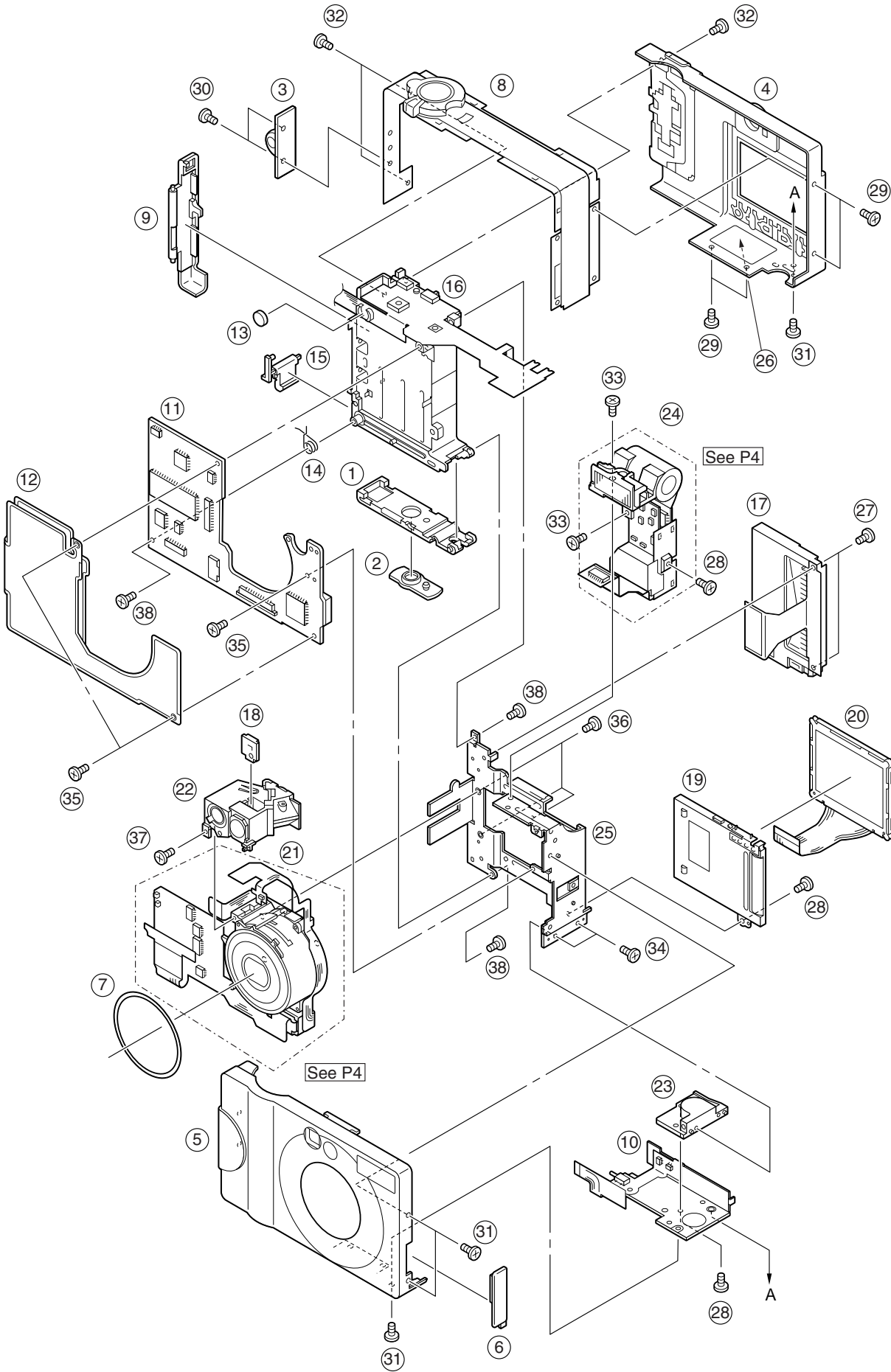
DIGITAL IXUS

C83-1005

PARTS CATALOG



This page intentionally left blank



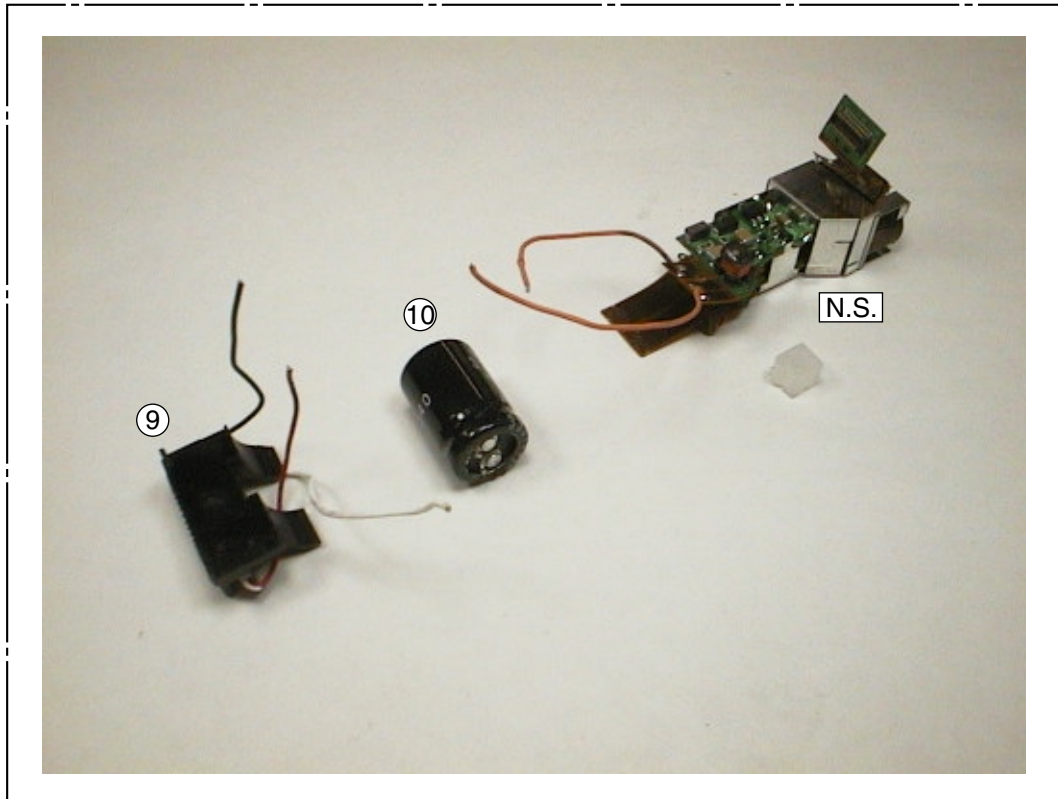
Parts List (Camera Body)

SYMBOL	NEW	PARTS NO.	CLASS	Q'TY	DISCRIPTION	REMARKS
1	*	CD1-3101-000	F	1	COVER, BATTERY	
2	*	CD1-3102-000	F	1	COVER, DC COUPLER	
3	*	CD1-3106-000	H	1	RING, STRAP	
4	*	CM1-1007-000	K	1	REAR COVER UNIT	
5	*	CM1-1004-000	K	1	FRONT COVER UNIT	DIGITAL ELPH
5	*	CM1-1085-000	K	1	FRONT COVER UNIT	DIGITAL IXUS
5	*	CM1-1087-000	K	1	FRONT COVER UNIT	IXY DIGITAL
6	*	CD1-3083-000	F	1	COVER, JACK	
7	*	CD1-3036-000	H	1	SHEET, LENS BARREL	
8	*	CM1-1006-000	K	1	CENTER COVER UNIT	DIGITAL ELPH
8	*	CM1-1086-000	K	1	CENTER COVER UNIT	DIGITAL IXUS
8	*	CM1-1088-000	K	1	CENTER COVER UNIT	IXY DIGITAL
9	*	CD1-3107-000	F	1	COVER, CF	
10	*	CM1-1023-000	K	1	OPERATION KEY UNIT	
11	*	CM1-1019-000	M	1	PCB ASS'Y, MAIN	
12	*	CL1-1004-000	H	1	SHEET, SHIELD	
13	*	WK1-5132-000	D	1	BATTERY, LITHIUM(2ND)	
14	*	CS8-6151-000	C	1	SPRING, BATTERY LOCK	
15	*	CD1-3086-000	C	1	LOCK, BATTERY	
16	*	CY4-6044-000	K	1	BATTERY BOX UNIT	
17	*	CM1-1022-000	K	1	CF UNIT	
18	*	CD1-3050-000	H	1	HOLDER, LED	
19	*	CM1-1010-000	K	1	BACK LIGHT UNIT	
20	*	CY4-6049-000	M	1	PANEL, LCD	
21	*	CM1-1001-000	K	1	OPTICAL UNIT	
22	*	CM1-1002-000	K	1	FINDER UNIT	
23	*	CD1-3104-000	H	1	SOCKET, TRIPOD	
24	*	CY4-6043-000	K	1	FLASH/DC UNIT	
25	*	CD1-3103-000	H	1	FRAME, MAIN	
26	*	CY4-6050-000	Y	1	PLATE, BODY NUMBER	
27	*	CD1-3105-000	G	2	SCREW	
28	*	CD1-3108-000	G	3	SCREW	
29	*	CD1-3109-000	G	4	SCREW	
30	*	CD1-3110-000	G	2	SCREW	
31	*	CD1-3111-000	G	4	SCREW	
32	*	CD1-3112-000	G	3	SCREW	
33		XA1-7140-307	G	2	SCREW	
34		XA1-7170-307	G	2	SCREW	
35		XA1-7170-357	G	3	SCREW	
36		XA4-5170-309	G	3	SCREW	
37		XA4-9140-357	G	1	SCREW	
38		XA4-9170-359	G	3	SCREW	

OPTICAL UNIT CM1-1001-000



FLASH/DC UNIT CY4-6043-000



* N.S. stands for No Stock

Parts List (Camera Body)

SYMBOL	NEW	PARTS NO.	CLASS	Q'TY	DISCRIPTION	REMARKS
1	*	CD1-3042-000	H	1	PLATE, BARRIER DRIVE	
2	*	CD1-3040-000	H	1	BASE, BARRIER	
3	*	CD1-3039-000	H	2	PLATE, BARRIER	
4	*	CS8-5205-000	C	1	SPRING, BARRIER CLOSE	
5	*	CS8-5204-000	C	1	SPRING, BARRIER OPEN	
6	*	CD1-3041-000	H	1	RING, BARRIER DRIVE	
7	*	CD1-3033-000	H	1	CAP, BARREL1	
8	*	CD1-3034-000	H	1	CAP, FRONT	
9	*	CM1-1012-000	K	1	FLASH UNIT	
10	*	CK9-0308-000	E	1	CAPACITOR, ELECT.	330V 80UF

①



Wrist Strap WS-110

N.S.



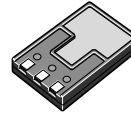
Battery Changer CB-2L/CB-2LE

②



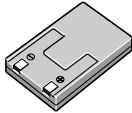
USB Interface Cable IFC-200PCU

N.S.



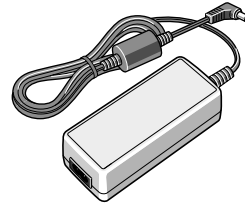
Battery Pack NB-1L

③



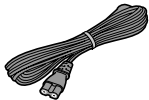
DC Coupler DR-300

N.S.



Compact Power Adapter CA-PS300

④



AC Cable

N.S.



Video Cable VC-200

⑤



Case for Battery Pack NB-1L

N.S.



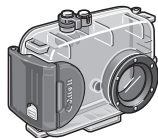
Soft Case SC-PS300

* N.S. stands for No Stock (Product available)

Parts List (Accessories)

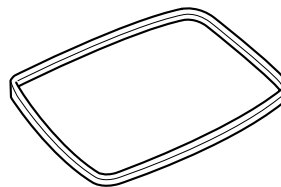
SYMBOL	NEW	PARTS NO.	CLASS	Q'TY	DISCRIPTION	REMARKS
1	*	CD1-3113-000	F	1	WRIST STRAP WS-110	
2		FH6-0775-000	E	1	INTERFACE CABLE IFC-200PCU	
3	*	CK3-0058-000	K	1	DC COUPLER DR-300	
4		WT3-5063-000	E	1	AC CABLE(N)	
4		WT3-5064-000	E	1	AC CABLE(E)	
4		D82-0644-000	E	1	AC CABLE(B)	
4		WT3-5066-000	E	1	AC CABLE(A)	
4		WT3-5062-000	E	1	AC CABLE(J)	
5	*	CD1-3121-000	F	1	CASE FOR BATTERY PACK	

N.S.



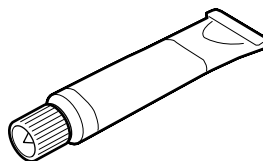
All Weather Case AW-PS200

⑥



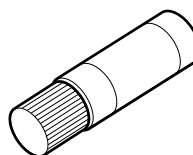
Waterproof seal

⑦



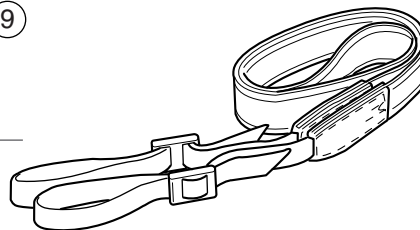
Silicone grease

⑧



Anti-Condensation Solution

⑨

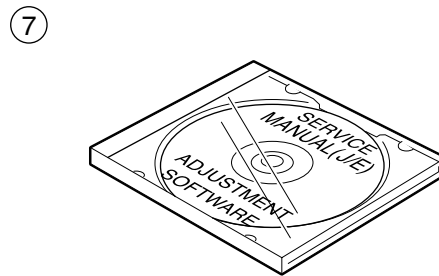
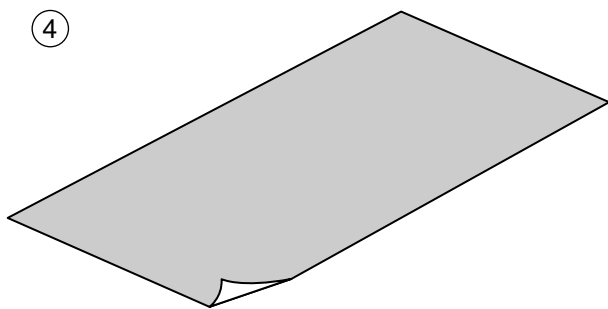
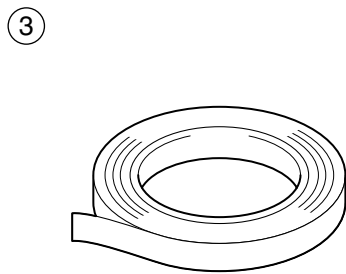
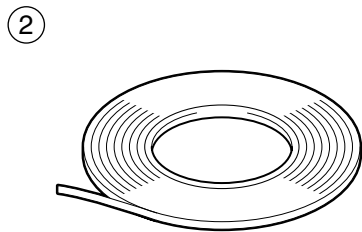
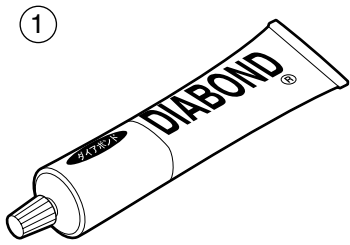


Neck Strap

* N.S. stands for No Stock (Product available)

Parts List (Accessories)

SYMBOL	NEW	PARTS NO.	CLASS	Q'TY	DISCRIPTION	REMARKS
6	*	CY4-6051-000	H	1	PACKING, RUBBER, AW-PS200	
7		DY9-3029-000	C	1	GREASE, PACKING	
8		DY9-3028-000	C	1	PROTECTOR, MOISTURE	
9	*	CY4-6052-000	H	1	NECK STRAP	



Parts List (Service Tools)

SYMBOL	NEW	PARTS NO.	CLASS	Q'TY	DISCRIPTION	REMARKS
1		DY9-3008-000	Y	1	BOND, DIA BOND NO.1663 BLACK	
2		CY4-6012-000	Y	1	ADHESIVE TAPE, SONY T4000	6mm x 50m roll
3		CY4-6018-000	Y	1	ADHESIVE TAPE, 3M NO.56	15mm x 66m roll
4		CY4-6016-000	Y	1	CHART, 18% GRAY	1.5m x 3m
5		DY9-2029-000	Y	1	FILTER, C-12	
6	*	CY9-1543-000	Y	1	FILTER, W-10	
7	*	CY8-4365-031	Y	1	CD-ROM, SERVICE MANUAL (J/E)	including ADJUSTMENT SOFTWARE
8	*	DY9-3026-010	Y	1	LUBE, HANARL FL-778, OIL	