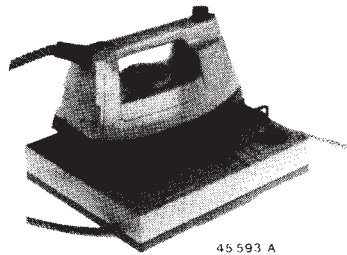


Service
Service
Service

HD 1809
HD 1812
HI 800
HI 804



Philips Domestic Appliances and Personal Care

Service Manual

PRODUCT INFORMATION

Type HD 1809 : linished sole plate
Type HD 1812 : inox sole plate
Type HI 800 : linished sole plate, successor HD 1809
Type HI 804 : inox sole plate, successor HD 1812

Voltage : 220 - 240 V
Power consumption : 1400 Watts, 50-60 Hz

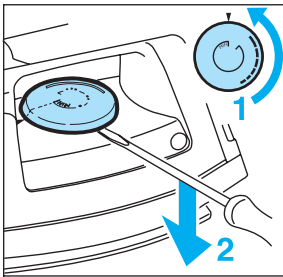
Features : Cold water reservoir, 1.4 l
: Variable steam control
: Shot of steam facility
: Pilot lamp
: Length water hose 2.0 m.
: Length cordset 2.0 m

Product meets the requirements regarding interference
suppression on radio and T.V.

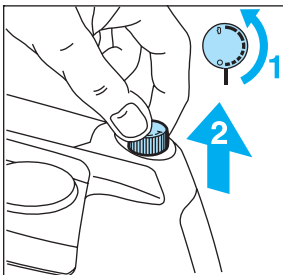


DISASSEMBLY ADVICE

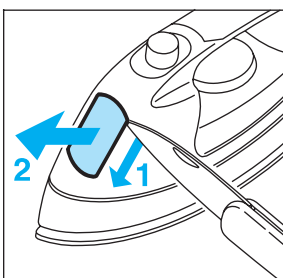
DIAL 15



STEAM KNOB 3



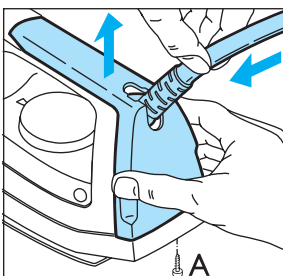
NOSE COVER 7



SWITCH 2

SWITCH KNOB 5

remove **SCREW A**
remove **INLAY**



LAMP 17

LAMP COVER 18

remove **DIAL 15**
remove **SCREW A**
remove **NOSE 7**
remove **SCREW B**
remove **INLAY 1**
remove **SCREW C 2x**
remove **LAMP 17**
unplug **TERM.SOCKET 4.1**
remove **HOSE 11**
remove **TERM.SOCKET 4.2**
remove **HANDLE 6**

PUMP 8

HOSE 14

HANDLE 6

remove **STEAM KNOB 3**
remove **DIAL 15**
remove **SCREW A**
remove **NOSE 7**
remove **SCREW B**
remove **INLAY 1**
remove **SCREW C 2x**
remove **LAMP 17**
unplug **TERM. SOCKET 4.1**
remove **HOSE 11**
remove **TERM.SOCKET 4.2**
remove **HANDLE 6**
remove **NUT 9**
remove **PLATE 101**

SOLE PLATE 10.1

SKIRT 10.2

THERMOSTAT 10.3

remove **NOSE 7**
remove **SCREW B**
remove **SCREW A**
remove **INLAY 1**
remove **SCREW C**
remove **LAMP 17**
unplug **TERM.SOCKET 4.1**
remove **HOSE 11**
remove **TERM.SOCKET 4.2**
remove **HANDLE 6**
remove **THERM.BUSH 19**
remove **screw D 2x**
(item 10.2 / 10.3 only)

CORDSET 24

SIEVE 26

SEALING RING 23

SEALING RING 25

SWITCH 22

remove **CAP 20 4x**
remove **SCREW E 4x**
remove **HOUSING 33**

SWITCH PLATE 29

SWITCH 30

PUMP 27

ONE WAY VALVE 28

remove **CAP 20 4x**
remove **SCREW E 4x**
remove **HOUSING 33**
remove **SCREW F**
remove wiring **HOSE 11**
remove wiring **PUMP 27**
remove wiring **CORDSET 24**

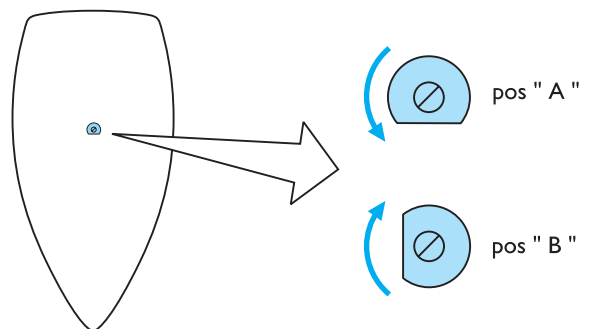
INLAY 1

HOSE 11

SWIVEL 12

remove **CAPS 20 4x**
remove **SCREW E 4x**
remove **HOUSING 33**
remove **screw G 2x**
remove **screw F**
remove wiring / **HOSE**

remove **SCREW A**
remove **INLAY 1**
remove **SCREW C 2x**
remove **LAMP 17**
unplug **TERM.SOCKET 4.1**



To adjust the thermostat.

The sole plate is completely cooled off.

Turn the bracket to position "A"

Then turn bracket a **quarter turn** clockwise to position "B"

You will hear a **"CLICK"**

Save the screw with loctite or the like

If in position "B" no **"CLICK"** is heard, adjust the thermostat with the screw inside the thermostat shaft.

Turn the screw in such a way that a **"CLICK"** is heard in pos. "B"

Save the screw with loctite or the like.

N.B. This procedure is applicable if only the thermostat is replaced.

Thermostats, see 10.1 have already been adjusted.

NOTES:

After the product has been repaired, it should function properly and has to meet the safety requirements as laid down and officially established at this moment.

N.B. Parts, with numbers from 100 upwards, cannot be ordered separately.

Item 27 consists of one pump, a straight tube and a plug.

Products produced before week 9216 have 2 pumps.

If one of them needs to be replaced, proceed as follows :

- Remove 2 existing pumps and the T-connecting tube.
- Assemble the new pump and the corresponding straight tube only.

The pump has to be assembled at the position indicated in exploded view of this manual.

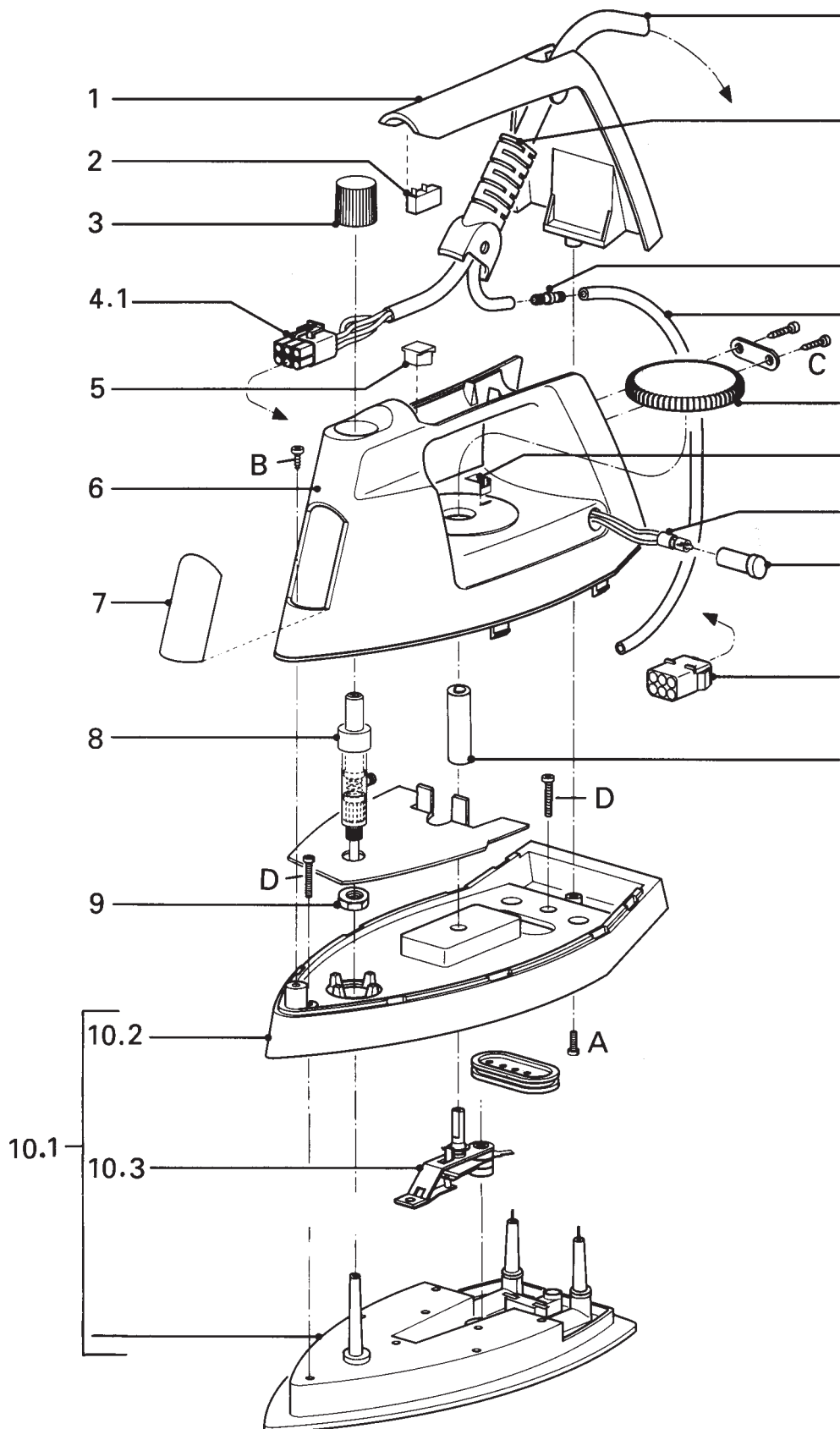
- Close the remaining hole in the water tank with the plug.
- Cut the 2 remaining electric connecting wires and insulate the ends with insulation tape.

PARTS LIST HD 1809 / HD 1812 / HI 800 / HI 804

POS	DESCRIPTION	SERVICE CODE
1	INLAY HD 1809/12	4822 441 80832
1	INLAY HI 800/04	4822 441 11776
2	SWITCH	4822 282 30224
3	STEAM KNOB HD 1809/12	4822 410 61505
3	STEAM KNOB HI 800/04	4822 410 10538
4.1	TERM. SOCKET	4822 290 30326
4.2	TERM. SOCKET	4822 290 30326
	SWITCH KNOB HD 1809/12	4822 410 62506
	SWITCH KNOB HI 800/04	4822 410 10539
6	HANDLE HD 1809/12	4822 418 40886
6	HANDLE HI 800/04	4822 498 10585
7	NOSE COVER	4822 441 80833
8	PUMP STEAM KNOB	4822 360 10119
9	NUT	4822 505 11106
10.1	SOLE PL.LIN. HD 1809	4822 259 10106
10.1	SOLE PL.LIN. HI 800	4822 259 10195
10.1	SOLE PL.INOX HD 1812	4822 259 10107
10.1	SOLE PL.INOX HI 804	4822 259 10199
10.2	SKIRT	4822 442 00408
10.3	THERMOSTAT	4822 282 20259
11	HOSE	4822 530 21028
12	SWIVEL	4822 325 60377
13	COUPLING PIECE	4822 530 40513
14	TUBE	4822 690 80116
15	DIAL HD 1809/12	4822 412 40219
15	DIAL HI 800/04	4822 410 10541
16	RATTLE PAPER	4822 492 71445
17/18	LAMP + COVER	4822 134 41081
19	THERMOSTAT BUSH	4822 404 40698
20	CAP	4822 462 71785
21	TANK KNOB	4822 410 61507
22	SWITCH KNOB HD 1809/12	4822 410 61508
22	SWITCH KNOB HI 800/04	4822 410 10542
23	SEALING RING	4822 466 62078
24	CORDSET EURO PLUG	4822 321 11031
25	SEALING RING	4822 466 62079
26	FILTER	4822 480 50455
27	PUMP 220 - 240 V	4822 360 10131
28	ONE WAY VALVE	4822 360 60275
29	SWITCH PLATE	4822 214 70375
30	SWITCH	4822 282 30225
31	GRID + RUBBERS HD 1809/12	4822 458 30619
31	GRID + RUBBERS HI 800/04	4822 458 10527
32	HOUSING + TANK	4822 441 11777
33	UPPER HOUSING	4822 441 11778

SCREWS :

- A : 3.5 x 17 (1x)
- B : 3.5 x 17 (1x)
- C : 3.5 x 12 (2x)
- D : M4 x 25 (2x)
- E : 3.5 x 17 (4x)
- F : 3.5 x 13 (1x)
- G : 3.5 x 12 (1x)



The diagram illustrates the wiring for a 6-pin connector, divided into three main sections: THERMOSTAT, IRON, and SEPARATE TANK.

- THERMOSTAT Section:**
 - Includes a TR switch, RF (Resistance) element, THERMOFUSE, TRF switch, and a MICRO switch.
 - The 6-pin connector is labeled with terminals 1 through 6, with corresponding labels L, N, S, and 6 below them.
- IRON Section:**
 - Includes a LAMP connected to the 6-pin connector.
- SEPARATE TANK Section:**
 - Includes a PUMP and a control panel with an ON/OFF switch and a selector switch.
 - The selector switch has positions for S, N, L, and L.

Wiring connections are shown between the components and the 6-pin connector, as well as between the connector and the power source (N, L).

Exploded view diagram of a control panel assembly. The diagram shows the front panel (31) with a display (21) and buttons (22, 23, 24, 25, 26). The main control unit (33) contains a microcontroller (30) and various connectors (32). A wiring diagram at the top shows the internal connections for the microcontroller, a connector, and a switch. A small label 'PIDA.03003 T19/121' is visible near the top right.