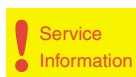


Service
Service
Service



Philips Domestic Appliances and Personal Care

Service Manual

SAP coding GC 6016

PRODUCT INFORMATION

Features : inox sole plate
boiler capacity 1 litre
length steam hose 1,9 metre
length cord set 1,9 metre
maximum steam output 80 gr/min
steam ready indicator
boiler empty indicator

Voltage : 220-240 Volt

Frequency : 50-60 Hz

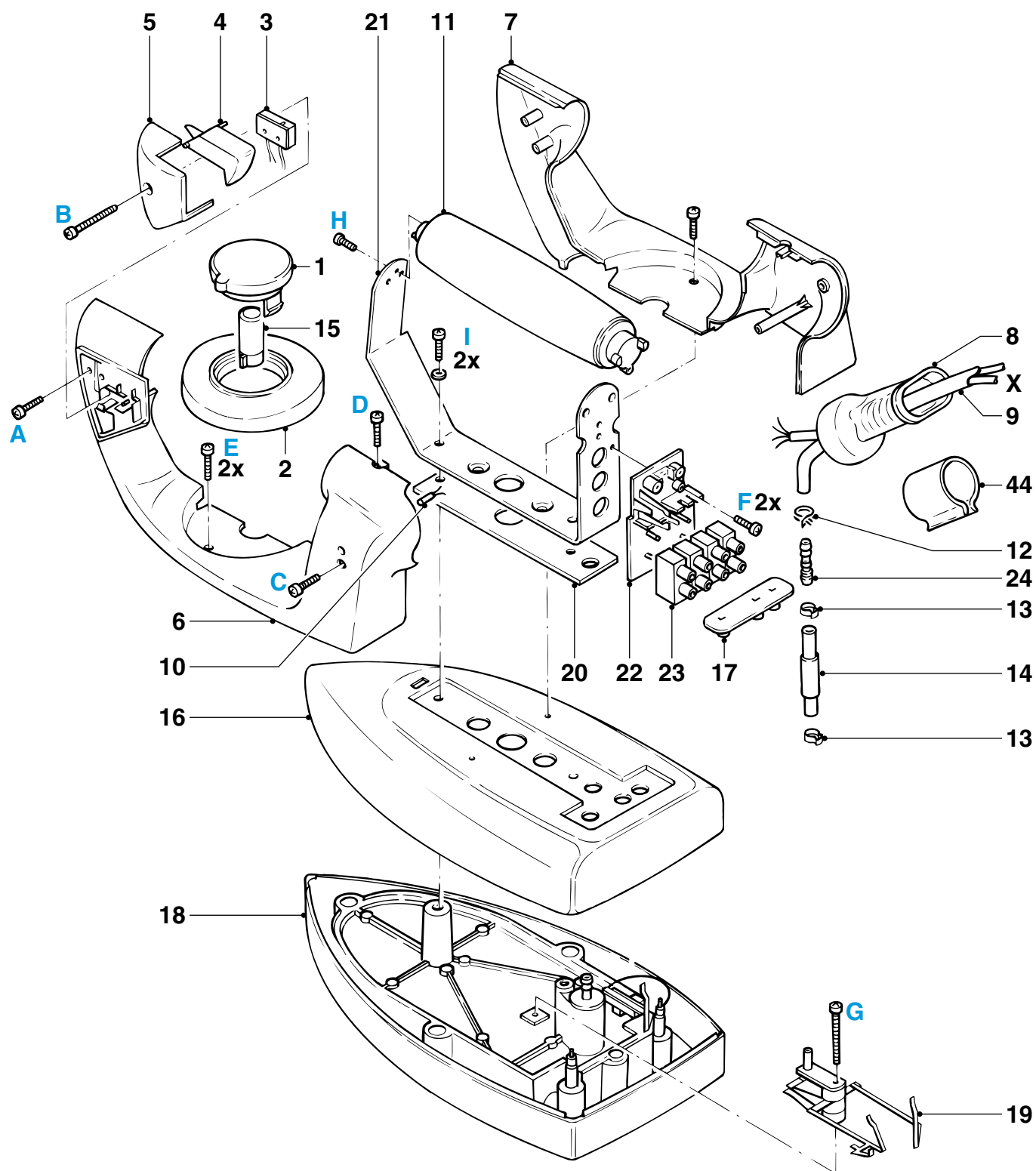
Power consumption : Boiler : 1200 Watt
Pressure : 3,5 bar
Iron : 800 Watt

Product meets the requirements regarding interference suppression on radio and television.

- After the product has been repaired, it should function properly and has to meet the safety requirements as laid down officially established at this moment.



EXPLODED VIEW IRON



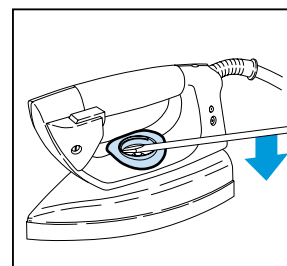
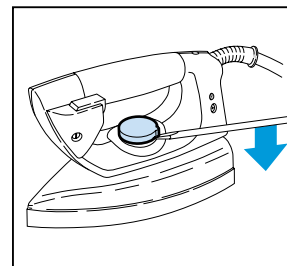
PARTS LIST IRON

DISASSEMBLY ADVISE IRC

Pos	Service Nummer	Description
1	9965 000 08247	Insert dial
2	4822 532 12772	Dial ring
3	4822 282 30239	Microswitch
4	9965 000 08184	Lever microswitch
5	4822 442 00787	Cover microswitch
6+7	4822 310 10944	Handle right + left part
8	4822 325 10193	Swivel black
9	9965 999 08248	Steam hose / electric cable
10	4822 134 10076	Pilot light
11	4822 498 10638	Cork grip
12	4822 492 71001	Clamping ring
13	4822 532 12742	Clamping ring
14	4822 325 10194	Sleeve
15	4822 402 10689	Connecting bracket therm.
16	4822 442 00788	Metal cover
17	4822 466 11473	Insulating bracket
18	4822 259 10234	Sole plate + pos. 19
19	4822 282 30238	Thermostat
20	4822 466 11474	Insulating plate
21	4822 310 10945	Bracket + item 22 and 23
24	4822 526 10669	Hose joint

DIAL 1

RING 2



MICROSWITCH 3

LEVER
MICROSWITCH 4

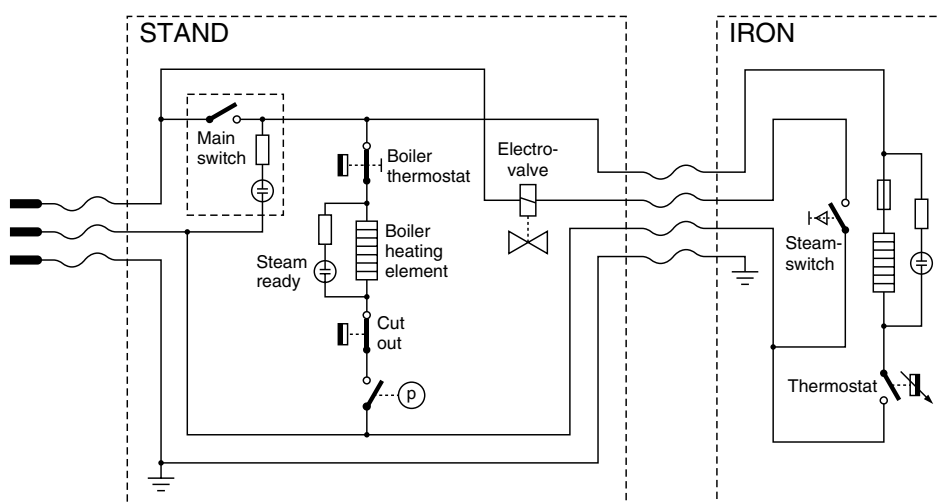
remove **SCREW A**

remove **COVER**

MICROSWITCH 5

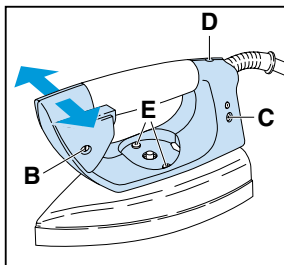
lift **MICROSWITCH 3**

unsolder **WIRING**



REPLACE HANDLE 6 + 7

- remove **SCREW B**
- remove **SCREW C**
- remove **SCREW D**
- remove **SCREW E**



REPLACE SWIVEL 8

REPLACE HOSE 9

REPLACE PILOT LAMP 10

- disassemble **HANDLE PARTS 6+7**
- remove **SCREW F 2 x**
- remove **CONNECTING WIRES**
- remove **CLAMP(S)**

REPLACE CORK GRIP 11

- disassemble **HANDLE PARTS 6+7**
- remove **SCREW G**
- remove **SCREW H**

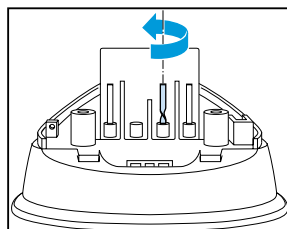
REPLACE COVER 16

REPLACE SOLE PLATE 18

REPLACE THERMOSTAT 19

REPLACE INSULATING PLATE 20

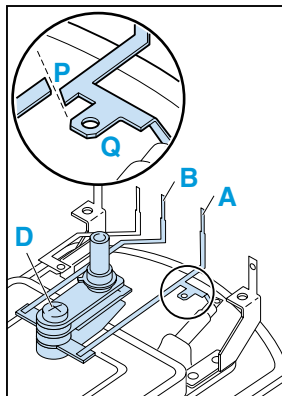
- remove **DIAL 1**
- remove **RING 2**
- remove **HANDLE PARTS 6+7**
- remove **HOSE**
- remove **SLEEVE**
- remove **CORK GRIP**
- remove **SCREW I**
- remove **BRACKET 21**
- turn conductor B through 180 degrees



- remove **PLATE 17**

THERMOSTAT 19 ONLY

- cut **CONDUCTOR A** at location P
- remove **SCREW J**

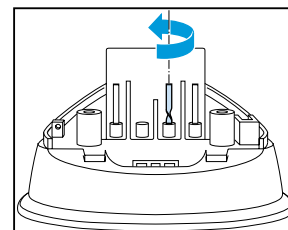


ASSEMBLY REQUIREMENTS THERMOSTAT 19

Instead of metal conductor A, the new thermostat has a wire with AMP clamp.

After fixing screw J, connect the AMP clamp to tag Q.

After assembling cover 16 ALWAYS turn conductor B through 180 degrees.



ADJUSTMENT AND CONTROLS

Thermostat 19

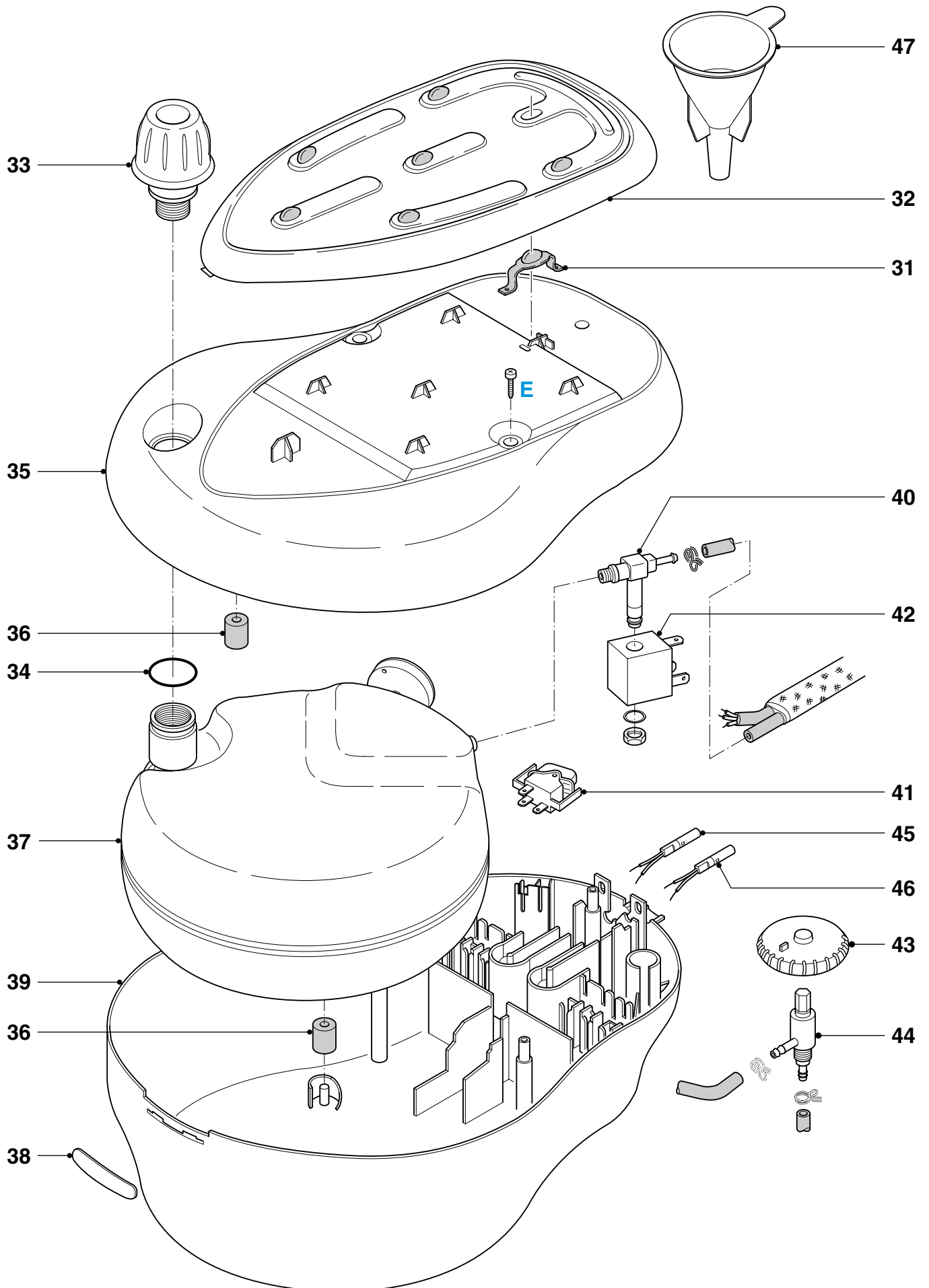
Thermostat (19) supplied as a spare part or fitted to the sole plate (18) has already been adjusted by the supplier and secured by glue.

To avoid disfunction of the iron , NEVER readjust the thermostat.

NOTE :

For opening you need a Torx screwdriver 362 TR T20 x 100.

EXPLODED VIEW STAND



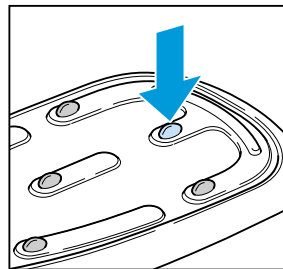
PARTS LIST + DISASSEMBLY ADVICE STAND

Pos	Service Nummer	Description
31	9965 000 08193	Tray rubber foot for fixation
32	9965 000 08194	Complete tray
33	9965 000 08244	Safety cap for boiler
34	9965 000 01782	Filling hole gasket for alu boiler
35	9965 000 08251	Superior stand printed
36	4822 462 71999	Boiler rubber feet
37	9965 000 08240	Complete boiler
38	9965 000 08201	Locket insert
39	9965 000 08202	Inferior stand
40	9965 000 01790	Filter
41	9965 000 08203	Main switch
42	4822 218 11561	Electrovalve
43	9965 000 08241	Steam dial
44	9965 000 01900	Steam regulator
45	9965 000 01902	Steam ready light
46	9965 000 01901	Boiler ready light
47	9965 000 08246	Funnel

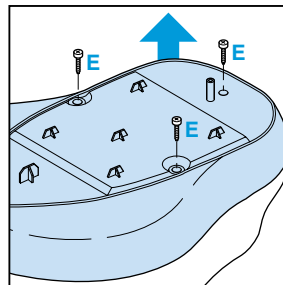
ADJUSTMENT AND CONTROLS

- To avoid leakage of the sealings and damage to the components in and on the boiler, **NEVER** clean the boiler with vinegar, a descaling agent or other chemicals.
- The boiler doesn't contain serviceable parts. Never disassemble the boiler body and /or components on and in the boiler.
- **ALWAYS REPLACE THE BOILER (37) WHEN:**
 - * the mechanical safety valve (33) has been activated.
 - * the boiler thermostat or hand - resettable safety thermostat are open, because the boiler has been subjected to too high temperatures.
 - * the electrovalve (42) fails or the sieve is soiled with scale.
- After the product has been repaired, it should function properly and has to meet the safety requirements as laid down and officially established at this moment.

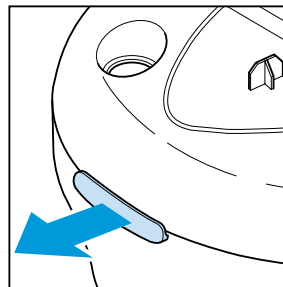
OPEN THE STAND



pressure fixation rubber through the tray



remove **SCREW E (3 x)**



remove **LOCKED INSERT 38**

NOTE:
OPEN NOW THE STAND.
DON'T WORRY IF THE SNAPS AT THE SIDE WILL BE BROKEN.
THEY ARE ONLY FOR THE ASSEMBLY.
THE STAND REMAINS CLOSE WITHOUT THESE SNAPS.