



Philips Domestic Appliances and Personal Care

Service Manual

PRODUCT INFORMATION

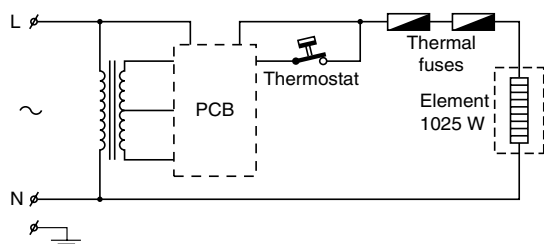
- This product meets the requirements regarding interference suppression on radio and TV.
- After the product has been repaired, it should function properly and has to meet the safety requirements as officially laid down at this moment.

TECHNICAL INFORMATION

- Voltage : 120 V
- Frequency : 60 Hz
- Power consumption : 1025 W
- Contents jug : 1800 cc
- Coloursetting : White
- Filter size : 1 x 4
- Thermostat switch-off temp : 162 °C
- Fuse cut-off temp : 229 °C
- SAP coding : HD7538/54

DISASSEMBLY- AND RE-ASSEMBLY ADVISE

- No specific issues.



REPAIR INSTRUCTION

- **Electrical circuit**
When the appliance does not work, check the electrical circuit. If the thermal fuse or thermostat prove defective, the complete pump unit has to be replaced.

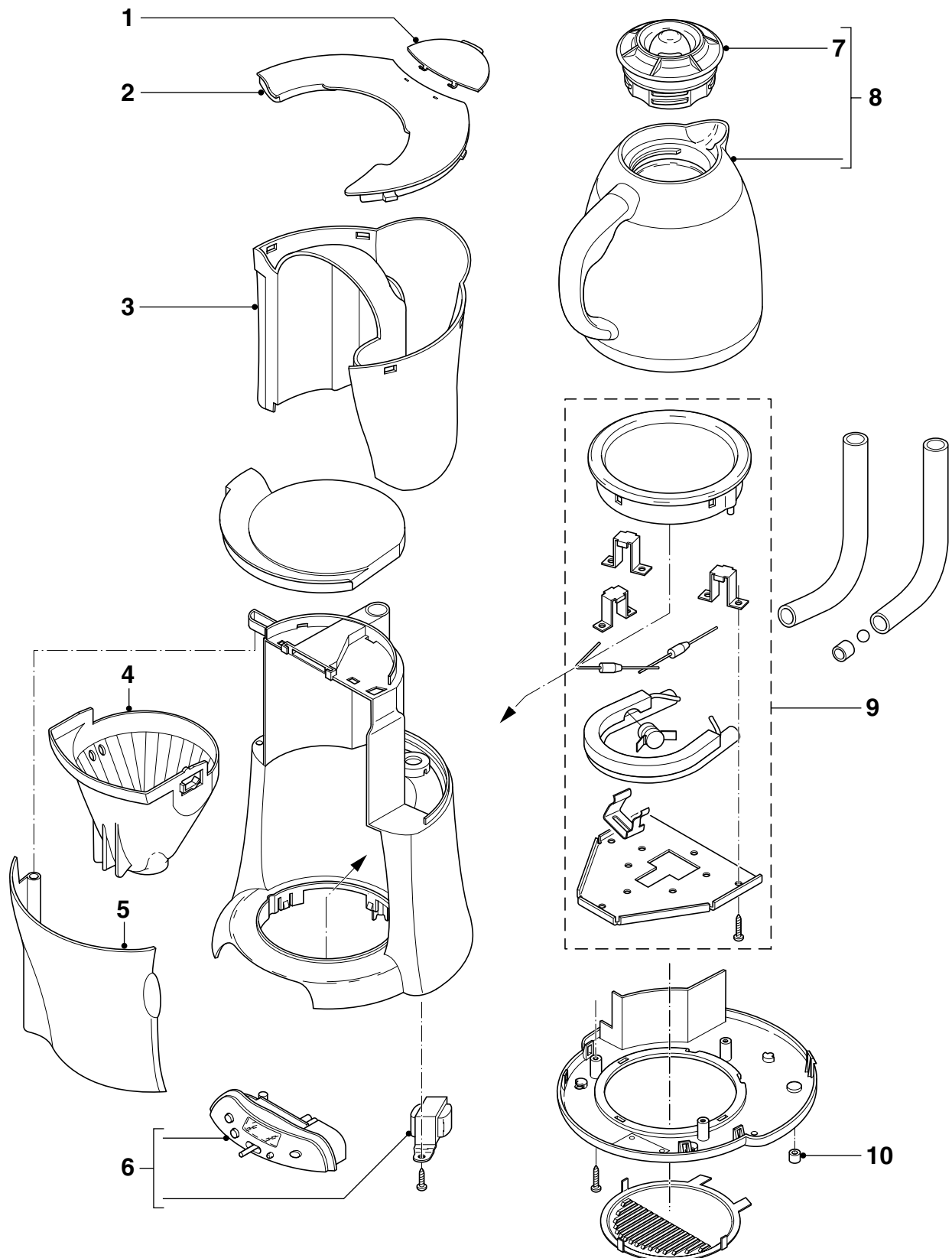
- **De-scaling**
If the water system is nearly or less clogged by scale then operate the coffeemaker a few times with vinegar or with a 10-15% solution of either vinegar-acid, citric acid or tartaric acid, into cold tap water.

Do not use other de-scaling agents as these may harm the appliance.

If this procedure does not restore the function, then switch off the coffeemaker when the acid has passed through during appr. 3 min. Keep the appliance in this condition overnight and continue/repeat the cleaning operation. After the de-scaling procedure, operate the coffeemaker twice with tap water in order to rinse away any residual substances.

OPTIONAL (accessories)

- Commercial trade number : HD7975 (White)



Pos	Service code	Description
1	9965 000 16815	Door lid watertank
2	9965 000 16816	Lid water tank
3	9965 000 16817	Watertank assy
4	9965 000 16828	Filter assy
5	9965 000 16829	Filter cover

Pos	Service code	Description
6	9965 000 16830	Clock panel assy therm + transformer
7	9965 000 16831	Therm jug lid white
8	9965 000 16832	Therm jug + lid
9	9965 000 16833	Heater assy complete
10	9965 000 16826	Rubber foot