

Service Service Service



Philips Domestic Appliances and Personal Care

Service Manual

PRODUCT INFORMATION

Tooth brush

- Gum Protection System : The brush automatically flexes back when too much pressure is applied. Because of this signal, the user will develop a safe and efficient brushing technique.
- Active tip : Removes plaque between the teeth
- Colours : White / grey
- Timer / charging light : The pilot light blinks green during charging. When the brush time of two minutes has passed, the pilot light blinks red.
- Waterproof : yes
- Anti rolling strip : To prevent the appliance from rolling away

Massage jet

- Suitable for use with mouthwash : yes
- Detachable parts dishwasher proof : yes
- Colours : White / grey

TECHNICAL DATA

Voltage	: 100 V, 110-120 V, 220-240 V, 50-60 Hz
Power consumption	: 16 Watts
Speed tooth brush	: Up to 15.000 brush strokes per minute
Toothbrush Pressure Control click at	: 270 gr
Charging time tooth brush (empty to full)	: 16 - 24 hours
Operating time tooth brush (full to empty)	: approx. 25 minutes
Battery type tooth brush	: NiCd

Product meets the requirements regarding interference suppression on radio and TV.

Toothbrush

Never open the handunit of the tooth brush, because the unit is not water tight anymore.

Make sure the socket is live when you recharge the tooth brush. The electricity supply to sockets in mirror cabinets over washbasins or shaver sockets in bath rooms may be cut off when the light is turned off.

Charge the appliance for at least 16 hours before using it for the first time.

When you first start using the toothbrush, it's recommended that you use it until the battery is empty. To do so, use the tooth brush in the normal way without charging it between the brushing sessions.

Recharge the tooth brush when the motor almost stops running. Repeat this procedure 3 times in a row. To extend the lifetime of the battery, repeat this procedure every 6 months.

When **discarding** the hand unit, remove the built-in rechargeable battery.

The battery should be completely empty.
(for instructions p.t.o.)

Water jet

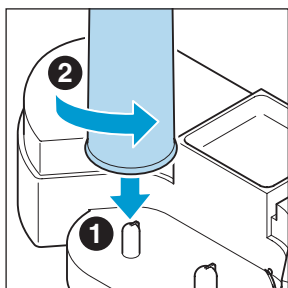
When you use the water jet for the first time or when you have not used it for a long time, it's necessary to set the volume control to its maximum position to make the water start flowing to the jet tip. If the water doesn't flow out after 10 seconds, put the jet tip in your mouth and suck it for a few seconds.

After using mouthwash, fill the water reservoir with clean water and let the application run until the water reservoir is empty.

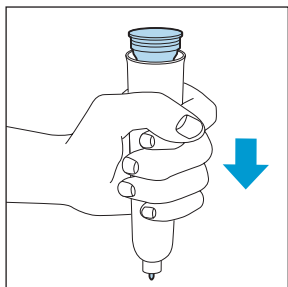
Due to a **minor colour difference** between the containers of the HX 2745 and HX 1725, for standardisation reasons, the water container (pos. 1) and storage container (pos. 2) are replaced by the containers of the HX 2745.

INSTRUCTIONS TO REMOVE THE BATTERY

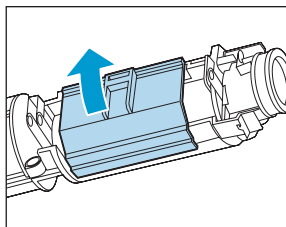
Pick up the charging unit and place the toothbrush on the pin. Turn the toothbrush anti-clockwise to unscrew the bottom of the toothbrush.



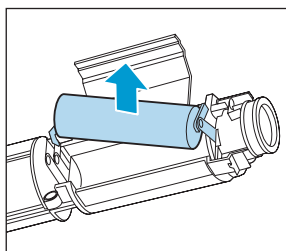
Turn the toothbrush upside down and press it down on a hard surface to remove the battery holder.



Open the lid of the battery holder by means of a screwdriver.



Lift the battery out of the battery holder by means of a screwdriver.



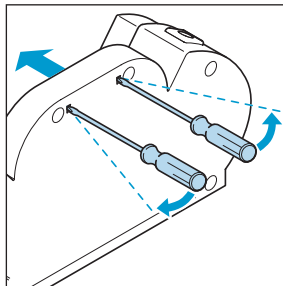
After the bottom has been unscrewed, the appliance may not be watertight anymore and the guarantee will become invalid.

DISASSEMBLY ADVICE

To open the product

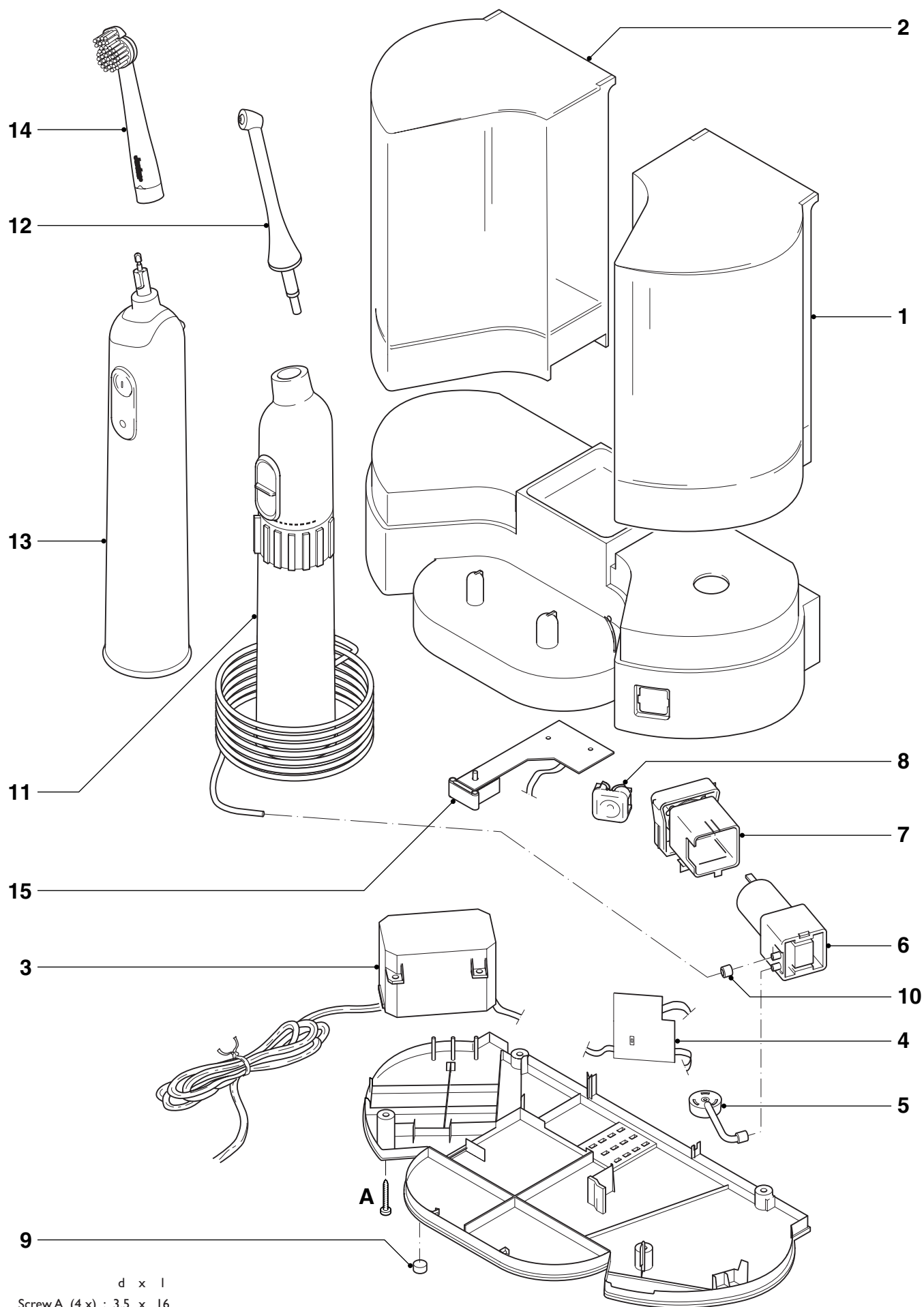
remove **Screw A (4 x)**

Reset the nocks (2x)



Pos.	Description	Service code
1	Water container	4203 035 77440
2	Storage container spouts	4203 035 77450
3	Transf. + cordset EURO plug (220-240V)	4203 035 77470
	Transf. + cordset flat plug (110-127V)	4203 035 77490
	Transf. + cordset Korea (220V)	4203 035 77500
4	PCB switch	4203 035 77510
5	Connecting piece	4203 035 77460
6	Pump	4822 360 10147
7	Suspension bracket	4203 035 77530
8	Cover On/Off button	4203 035 77520
9	Stud	4203 035 77550
10	Clamping ring	4822 532 61262
11	Hand unit waterjet	4203 035 77540
12	Set of 4 spouts	4203 035 77560
13	Hand unit tooth brush	4203 035 75460
14	Brush head (2- pack)	8812 012 30020
15	PCB Charging unit	4203 035 77850

EXPLODED VIEW HX 2745



d x l
Screw A (4 x) : 3.5 x 16