



Philips Domestic Appliances and Personal Care

# Service Manual

## PRODUCT INFORMATION

Motor		: Synchronous
Power		: 25 W
Cone speed	50 Hz	: 54 r.p.m.
	60 Hz	: 65 r.p.m.
Cord Length		: 1.2 m
Continuous running time		: 6 min.
Bowl capacity		: 1000 ml
Colour	HR 2746/A	: Ivory / Blue
	HR 2746/B	: White / Blue

## SERVICE INFORMATION

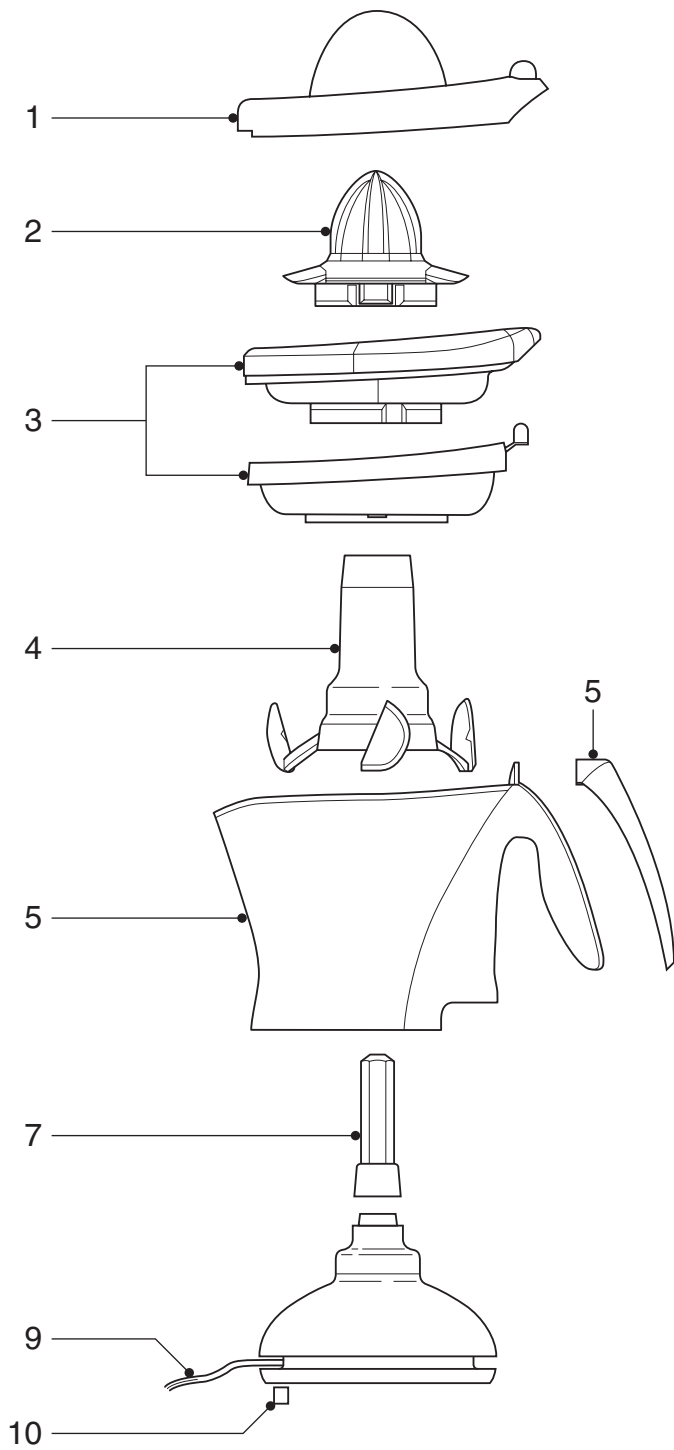
- Drive shaft (item 7) can be pulled off.
- Components configuration on exploded view may differ from specific versions.  
However, the actual components are discernable by code number.

Product meets the requirements regarding interference suppression on radio and TV.

After the product has been repaired, it should function properly and has to meet the safety requirements as laid down officially established at this moment.

HR 2746/AA

HR 2746/BA



1	Dust cover	4203 065 63310	5	Container-Unit 1,0 l	(ivory)	4203 065 63390
2	Cone	(ivory) 4203 065 63320			(white)	4203 065 63400
		(white) 4203 065 63330	7	Spindle 1,0 l	(ivory)	4203 065 63420
3	Sieve-Unit	(ivory/blue) 4203 065 63350			(white)	4203 065 63430
		(white/blue) 4203 065 63360	9	Cordset + sucker	(ivory)	4203 065 63450
4	Stirrer	(ivory) 4203 065 63370			(white)	4203 065 63460
		(white) 4203 065 63380	10	Stud		4822 462 40374