

Service
Service
Service



Philips Domestic Appliances and Personal Care

Service Manual

PRODUCT INFORMATION

Features

- Colour white/green.
- Cerelon soleplate
- Self clean function
- Extra steam (25 ± 2 g/min)

TECHNICAL INFORMATION

Voltage/frequency : 100 V, 110 V-127 V, 220-240 V, 50-60 Hz
Power consumption : 1200 W

Soleplate

Ceralon, the name indicates the strong combination of a non-stick coating ("lon"). Blended with ceramic ("Cera") particles. The soleplate is coated with Ceralon material which is smooth gliding, high scratch resistance and good durability advantage over the non stick coatings.

Self clean function :

When the self clean function is pushed, a sudden flow of water is released from the tank into the soleplate. This thermal shock will cause water scale particles come loose from the steam chamber. These particles are then flushed out through the steam vents by the water.

This product meets the requirement regarding interference suppression on radio and television.

DISASSEMBLY ADVICE + PARTS LIST IRON

CORD SET 5

PUMP 2

PILOT LIGHT COVER 9

PILOT LIGHT 10

remove **dosing unit 1**

remove **spray knob 3**

remove **screw A x2**

remove **screw B x1**

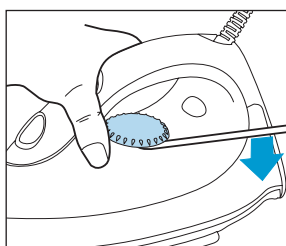
remove **inlay 4**

remove **screw C x2**

(cord clamp)

TANK SET 11

remove **dial 7**



remove **screw D x2**

COVER 12

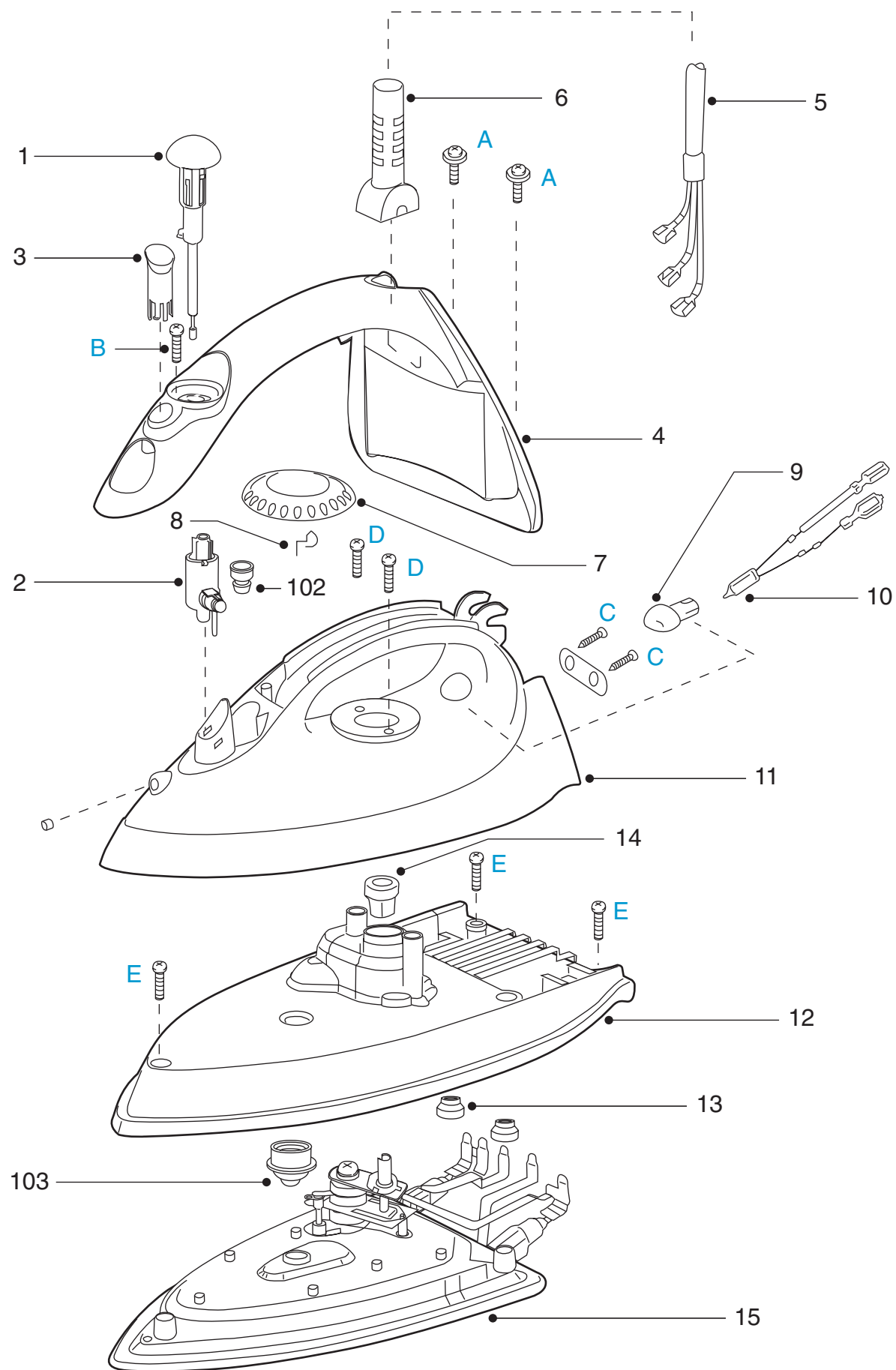
SOLEPLATE 15

ISOLATION STUD 13

remove **screw E x3**

Pos	Description	Consist of	Service code
1.	Dosing assy (with extra steam)		4239 021 09970
2.	Pump		4822 360 10416
3.	Spray knob		4239 026 04750
4.	Inlay (with spray feature)		4239 026 06290
5.	Cordset EU		4822 321 11467
6.	Swivel		9965 000 11533
7.	Dial (printed)		4239 021 09960
8.	Rattle spring		4239 014 53790
9.	Pilot light cover		4822 462 11139
10.	Pilot light		4822 134 10133
11.	Tank set (with spray)	102	4239 022 53540
12.	Cover		4822 442 01638
13.	Isolation stud		4822 532 12722
14.	Thermostat bush		9965 000 11534
15.	Soleplate assy 220–240V cerelon		4239 020 94100
16.	Sealing set	102,103	4822 310 11259

EXPLODED VIEW IRON



NOTES

Notes :

1. Parts with number from 100 and higher cannot be ordered separately.
2. In case of any defect in thermostat, the complete soleplate had to be replaced.
3. No information about the type number and voltage has been stamped into the type plate, engrave at least type number and voltage into the typeplate with a tool.
4. After the product has been replaced, it should function properly and has to meet the safety and legal regulations set by the related country.

