

Philips Domestic Appliances and Personal Care

# Service Manual

## PRODUCT INFORMATION

	HI 105	HI 108	HI 110	HI 114	HI 116
colour white	x	x	-	x	-
colour red	-	-	x	-	x
sole plate linished	x	x	x	-	-
sole plate coated	-	-	-	x	x
pilot lamp	-	x	x	x	x

**Voltage / frequency** : 220 - 240 V, 50 - 60 Hz  
: 110 - 127 V, 50 - 60 Hz

**Power consumption** : 900 - 1100 Watts

**Product meets the requirements regarding interference suppression on radio and TV.**

## ASSEMBLY ADVICE

### CORDSET 5

remove **SCREW A**  
remove **BACK PLATE 101**

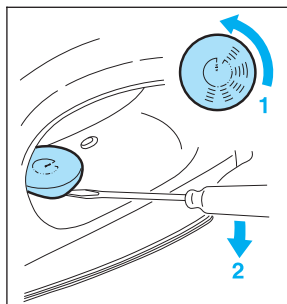
### SOLE PLATE 1

### THERMOSTAT 3

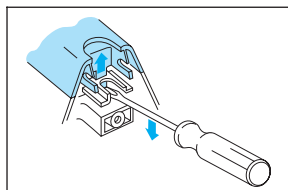
### INSULATION STUDS 3

### LAMP 4

remove **DIAL 102**



remove **SCREW A**  
remove **BACK PLATE 101**  
remove **SCREW B 3x**  
remove **CORDSET 5**  
remove **INLAY 103**



remove **SCREW C 3x**  
remove **HANDLE 104**

## PARTS LIST HI 105 / HI 108 / HI 110 / HI 114 / HI 116

POS.	DESCRIPTION	SERVICE CODE
1	SOLE PLATE 110 - 127 V (incl. pos. 3)	4822 259 10209
1	SOLE PLATE 220 - 240 V (incl. pos. 3)	4822 259 10211
2	INSULATION STUDS	4822 532 12722
3	THERMOSTAT	4822 282 10298
4	PILOT LAMP 100 - 240 V	4822 134 10055
5	CORDSET EURO PLUG	4822 321 10951
5	CORDSET UK PLUG	4822 321 10952
5	CORDSET UL PLUG	4822 321 10947

### NOTES: For standardisation reasons:

- \* only the coated sole plate will be supplied for those types, which are suitable for 220 - 240 V.
- \* only the finished sole plate will be supplied for those types, which are suitable for 110 - 127 V.
- \* only cordsets with a length of 2.6 m will be supplied. the colour of the cordset may differ from the original colour.

Parts, with numbers from 100 and higher, cannot be ordered separately.

### NOTE:

After the product has been repaired, it should function properly and has to meet the safety requirements and legal regulations as laid down and officially established at this moment.

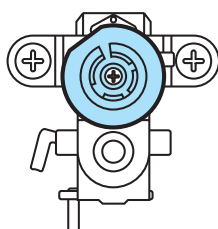
## ADJUSTMENT AND CONTROLS

### Thermostat 3

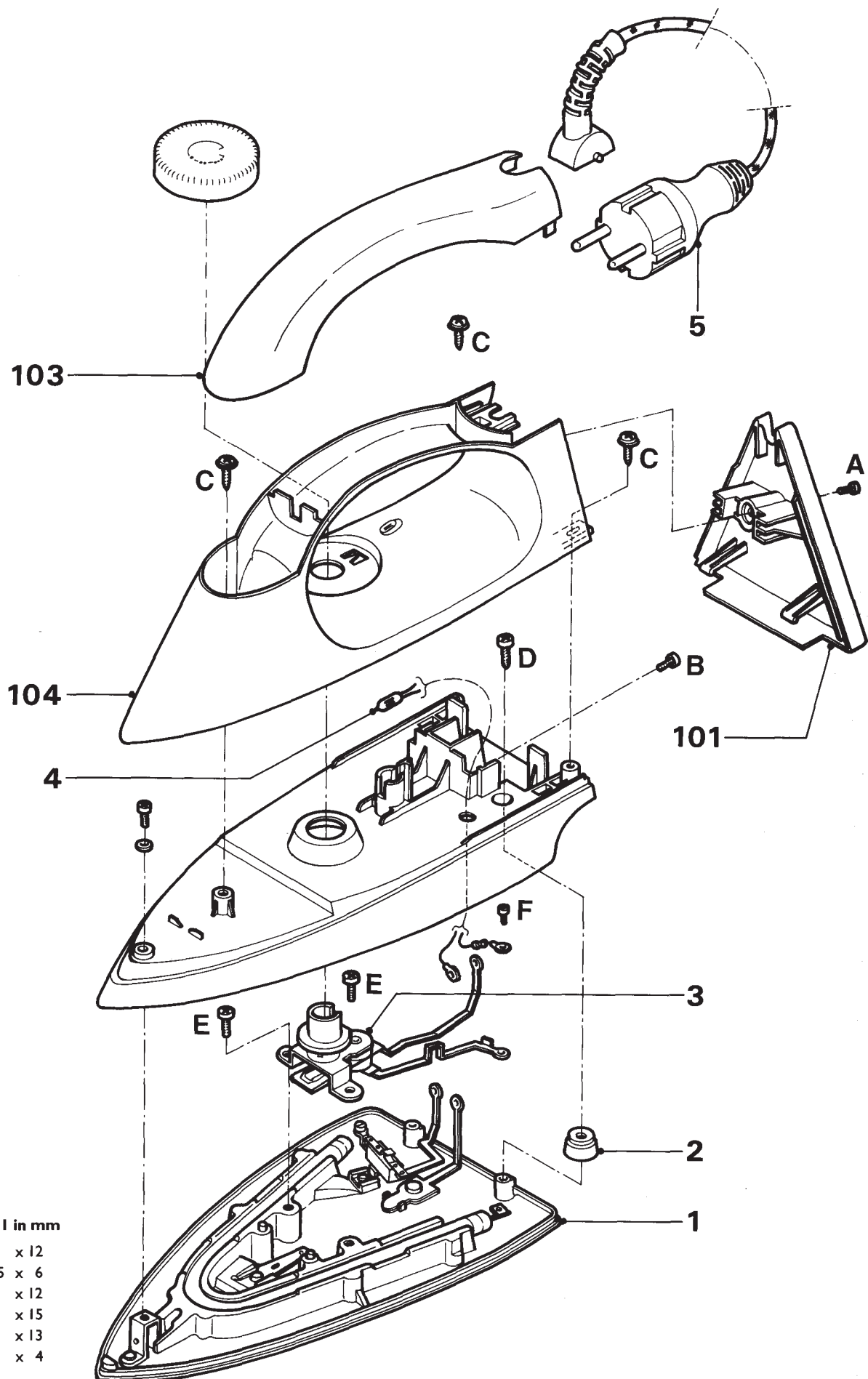
Thermostat ( 3 ), fitted to sole plate ( 1 ) has already been adjusted by the supplier and secured by glue.  
To avoid disfunction of the iron, **NEVER** readjust the thermostat.

### Adjustment Thermostat 3, supplied as a spare part.

Connect the connecting strips to an Ohm meter.  
Set the vertical slot of the thermostat bush to the 11 o'clock position ( see picture ).  
Turn the adjusting screw clockwise or anti-clockwise until the Ohm meter indicates "0". ( the contacts are closed )  
Then turn the adjusting screw clockwise until the Ohm meter indicates ∞. ( the contacts are open )  
While free turning the thermostat bush, check if the thermostat switches in the 11 o'clock position.  
Secure the adjusting screw by glue.  
After adjusting the thermostat, always check the temperature of the soleplate, with the dial set on the **MAX.** position. ( 220 ± 20 °C )



# EXPLODED VIEW HI 105 / HI 108 / HI 110 / HI 114 / HI 116



## Screws : d x l in mm

A 1x	: 3.5	x 12
B 3x	: M3.5	x 6
C 3x	: 3.5	x 12
D 3x	: 4.0	x 15
E 2x	: 4.2	x 13
F 1x	: M3	x 4