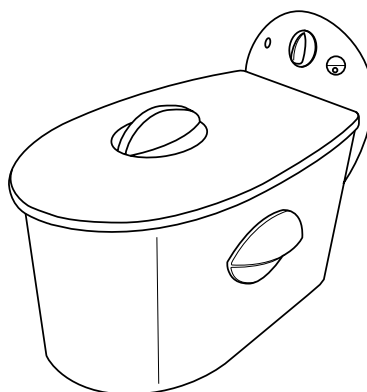
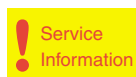


Service Service Service



Philips Domestic Appliances and Personal Care

Service Manual

SAP coding HD 6162

PRODUCT INFORMATION

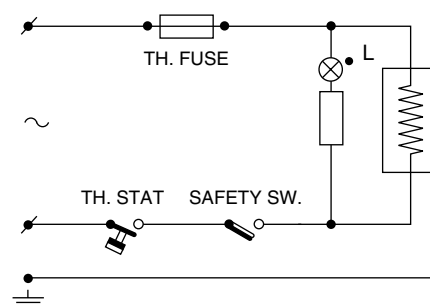
Voltage	: 220-240 V
Frequency	: 50/60 Hz
Power consumption	: 2200 W
Coloursetting	: Stainless Steel
Contents of oil	: 4000 cc
Basket (mesh)	: 6x6 mm

SERVICE INFORMATION

Thermal fuse cut-off temp.	: 280°C
Oil temperature	: 160 - 190°C

REPAIR INSTRUCTIONS

1. Front and rear shell of the portable heating unit are held together by means of 4 Torx screws. A suitable screwdriver can be ordered from Customer Service under 4822 395 50145. (this consist of a set of the Torx screwdrivers T6, T7, T8, T9, T10, T15 and T20).

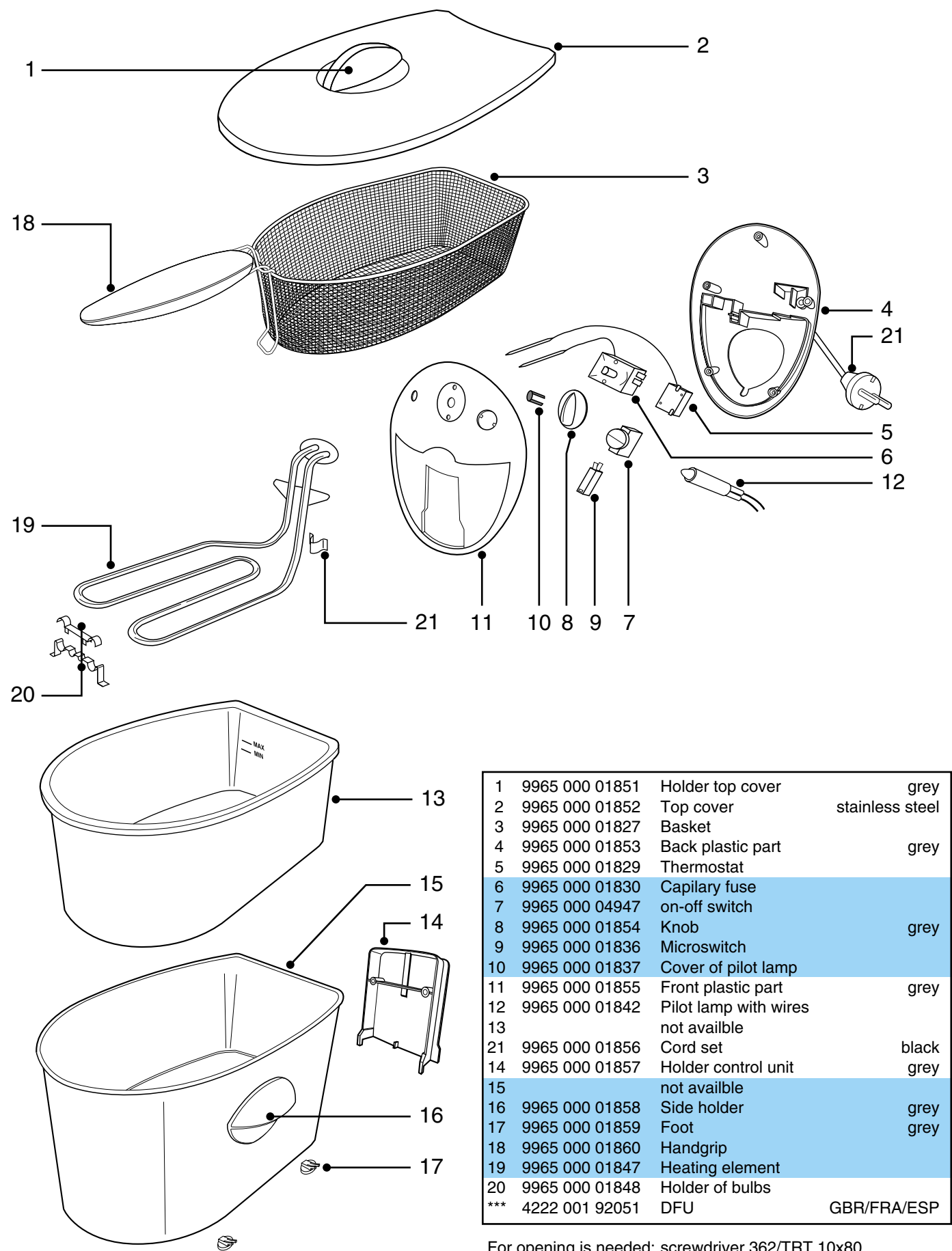


PRODUCTS MEETS THE REQUIREMENTS REGARDING INTERFERENCE SUPPRESSION ON RADIO AND TELEVISION.

- AFTER THE PRODUCT HAS BEEN REPAIRED IT SHOULD FUNCTION PROPERLY AND HAS TO MEET THE SAFETY REQUIREMENTS AS LAID DOWN OFFICIALLY ESTABLISHED AT THIS MOMENT.



HD 6162/A



For opening is needed: screwdriver 362/TRT 10x80