



Philips Domestic Appliances and Personal Care

Service Manual

PRODUCT INFORMATION

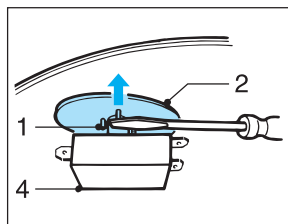
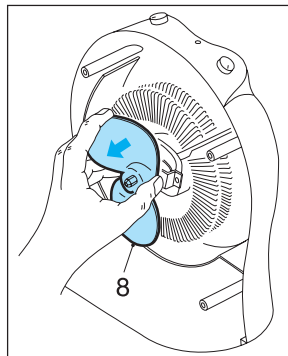
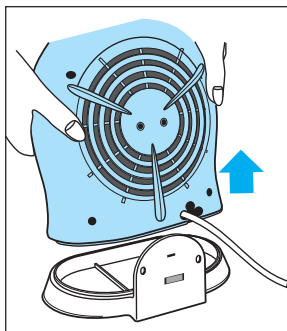
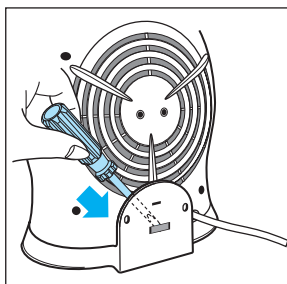
MSH coding 8823 274 00000
8823 275 00000

Functions, features and operational aspects :

		HD 3274	HD 3275
Switch : 4 positions :	○	x	x
	✻	x	x
	●	x	x
	●●	x	x
Thermostat		x	x
Frost guard	❄	x	x
On/off power light		x	x
Overheating protection		x	x
Drip waterproof		-	x
Stand/wall mounting bracket		-	x

Voltage/frequency : 230 V / 50 Hz
 Power consumption : 1000 - 2000 Watt
 Safety : Insulation class ☐

Product meets the requirements regarding interference suppression on radio and television.

**CAPS OPERATION
KNOBS 1****SWITCH KNOB 2****THERMOSTAT KNOB 3****SWITCH 4****THERMOSTAT 5****PILOT LIGHT 9**remove **SCREW A (4x)**remove **FRONT PART 101**remove **CAPS OPERATION
KNOBS 2****MOTOR 7****HEATING ELEMENT 6**remove **SCREW A 4x**remove **FRONT PLATE 101**remove **SCREW B 2x****FAN BLADE 8**remove **SCREW A 4x**remove **FRONT PLATE 101****STAND 102**

POS.	DESCRIPTION	SERVICE CODE
1	CAP OPERATION KNOBS	4822 462 10812
2	SWITCH KNOB	4822 410 10791
3	THERMOSTAT KNOB	4822 410 10792
4	SWITCH	4822 273 10319
5	THERMOSTAT	4822 282 10299
6	HEATING ELEMENT	4822 259 10212
7	MOTOR	4822 361 10521
8	FAN BLADE	4822 515 20148
9	PILOT LAMP	4822 134 10056

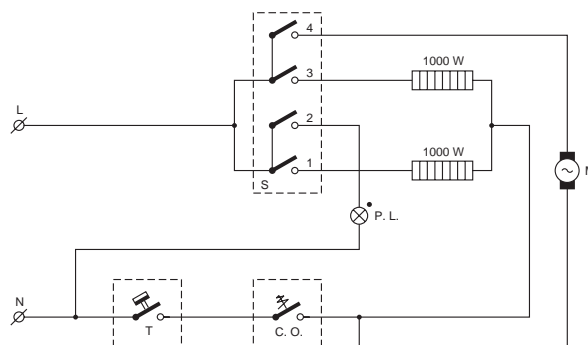
NOTE:

For standardisation reasons, only the red-coloured operation knobs have been incorporated into this manual.

The dark blue coloured knobs have to be replaced by the red-coloured ones.

When a cordset has to be replaced, always use a cordset with core wires with a diameter of 1.0 mm².

Parts, with numbers from 100 upwards, cannot be ordered separately.




L = LINE
N = NEUTRE
T = THERMOSTAT (Not included in HD3271)
C. O. = CUT OUT

P. L. = PILOT LIGHT (Not included in HD3271)
S = SWITCH
M = MOTOR

DAP0244

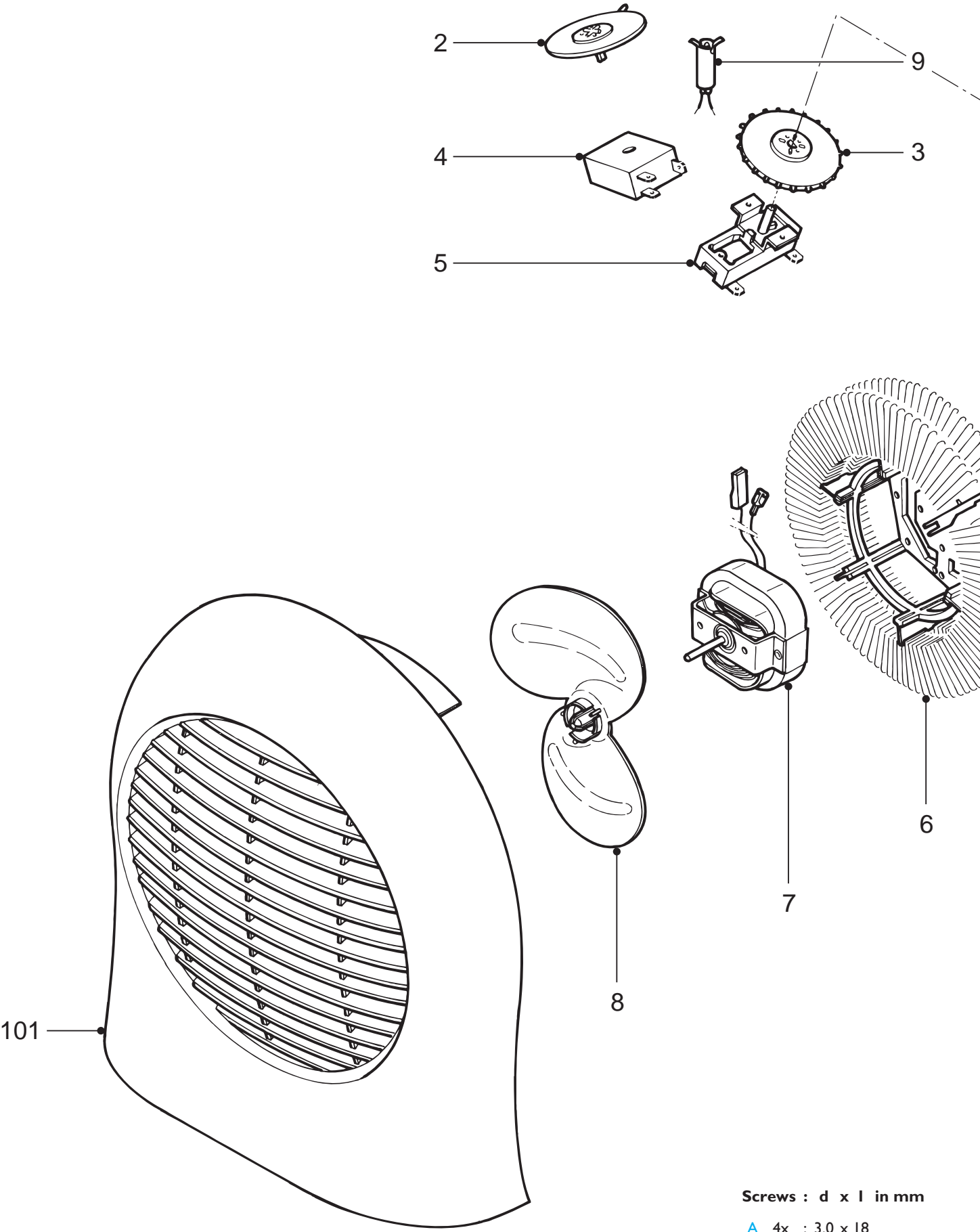
NOTE: AFTER THE PRODUCT HAS BEEN REPAIRED, IT SHOULD FUNCTION PROPERLY AND HAS TO MEET THE SAFETY REQUIREMENTS AND LEGAL REGULATIONS AS LAID DOWN AND OFFICIALLY ESTABLISHED AT THIS MOMENT.

Possible complaints**The heater doesn't function :**

- 1) When set to the cool air setting 

action: Set the thermostat knob to the highest position.
- 2) The overheating safety device has been activated

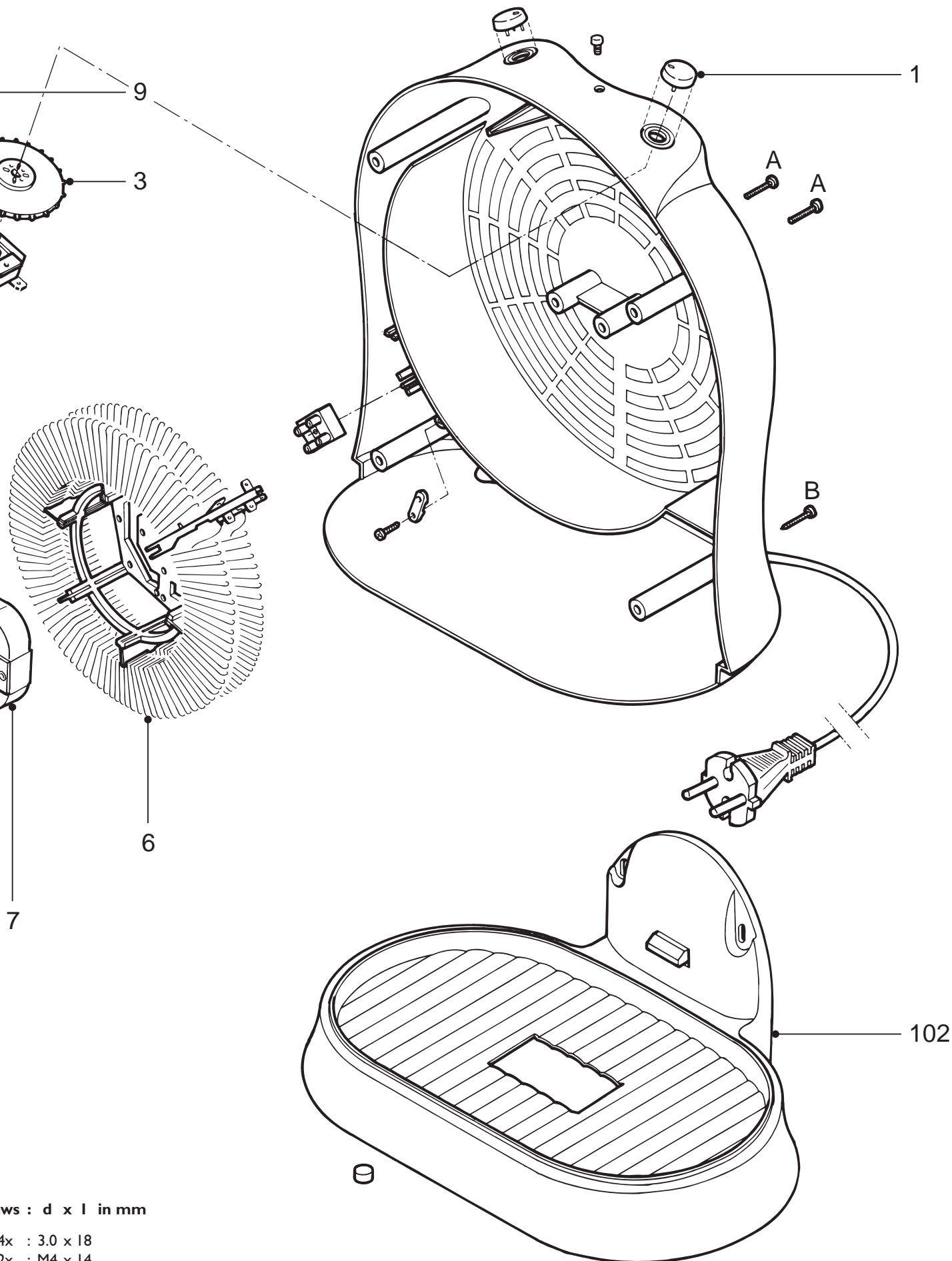
action: To reset the overheating device, remove the mains plug from the wall socket and let the heater cool down for 30 minutes.



Screws : d x l in mm

A 4x : 3.0 x 18

B 2x : M4 x 14



Dimensions : d x l in mm

4x : 3.0 x 18

2x : M4 x 14