

Service
Service
Service



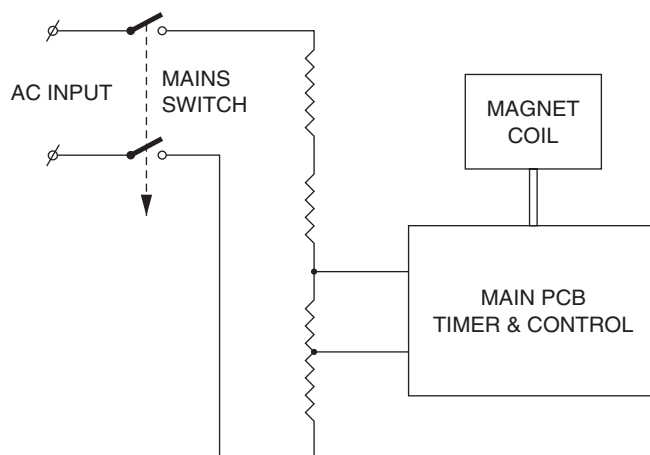
Philips Domestic Appliances and Personal Care

Service Manual

SAP coding HD 2600

PRODUCT INFORMATION

| | |
|-------------------|---------------------------|
| Voltage | : 220 - 240 V |
| Frequency | : 50 - 60 Hz |
| Power consumption | : 800 W |
| Coloursetting | : Chromium and Anthracite |



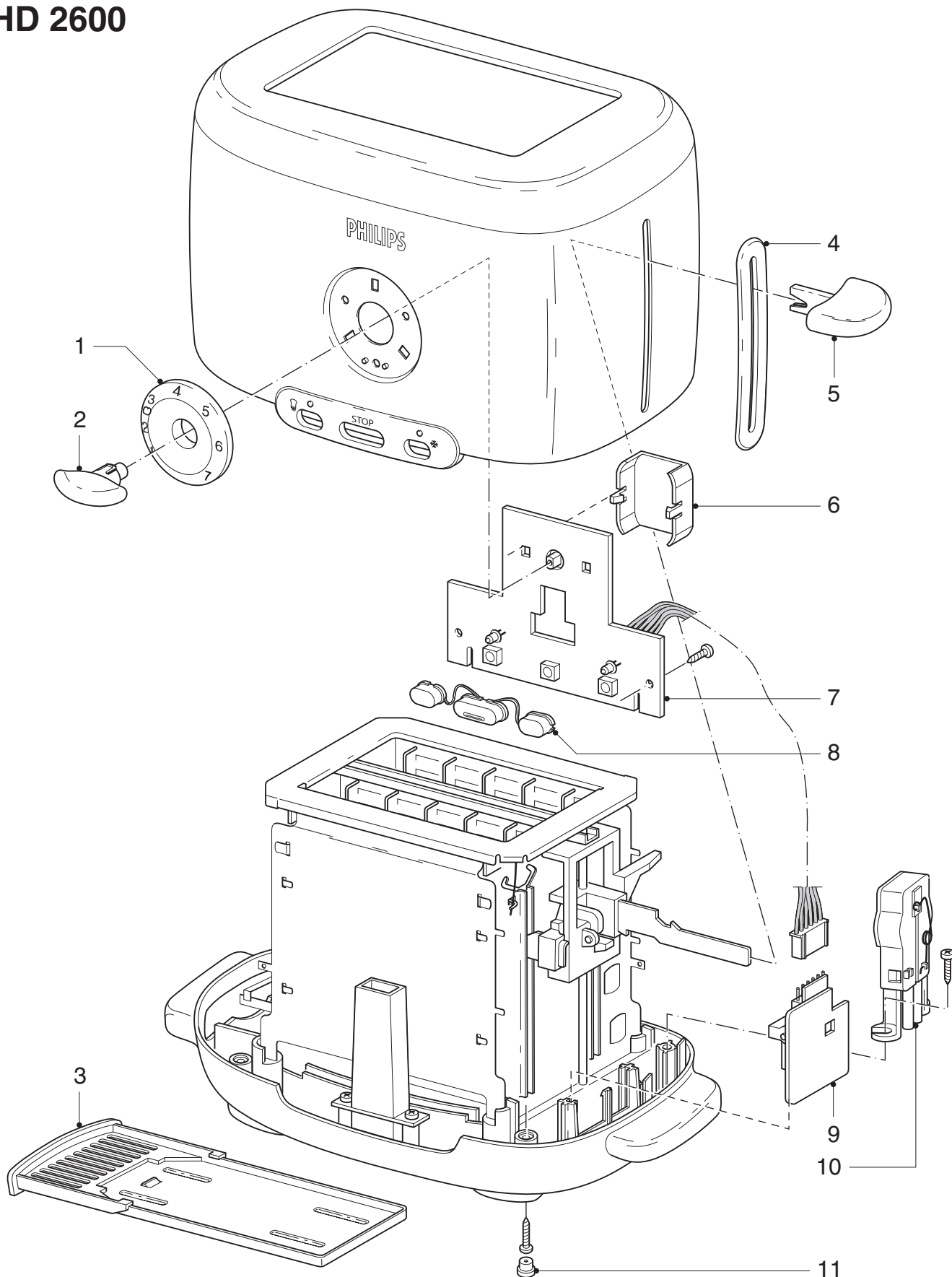
SERVICE INFORMATION

To open the appliance, first remove the 4 rubber feet Item (11).
After the rubber feet has been removed, a special screwdriver is needed.
The code number to order this special screwdriver is: 9965 000 15315

This product meets the requirements regarding interference suppression on radio and TV.

After the product has been repaired, it should function properly and has to meet the safety requirements as officially laid down at this moment.

HD 2600



| Pos | Description | | Service code |
|-----|--------------------|------------|----------------|
| 1 | Control knob cover | Anthracite | 9965 000 14802 |
| 2 | Control knob | Anthracite | 9965 000 14803 |
| 3 | Crumtray complete | Anthracite | 9965 000 14804 |
| 4 | Push slot | Anthracite | 9965 000 14805 |
| 5 | Push knob | Anthracite | 9965 000 14806 |
| 6 | PCB cover | | 9965 000 14807 |

| Pos | Description | | Service code |
|-----|------------------------|------------|----------------|
| 7 | Function PCB assembly | | 9965 000 14808 |
| 8 | Future button (3x) | Anthracite | 9965 000 14809 |
| 9 | Main PCB (Magnet unit) | | 9965 000 14810 |
| 10 | Mains switch assy | | 9965 000 14811 |
| 11 | Rubber foot | White | 9965 000 14812 |