



Domestic Appliances and Personal Care

Service Manual

MSH-coding 8822 001 00000

PRODUCT INFORMATION

Voltage	: 100; 120; 220-240 V
Frequency	: 50-60 Hz
Power consumption	: 1850-2200 W
Coloursetting	: body green; handgrip red
HD2001/C	: 200-240 V
HD2001/D	: 100-120 V

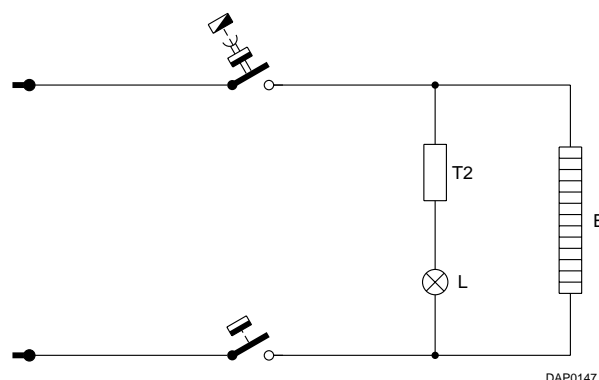
SERVICE INFORMATION

1. Base unit

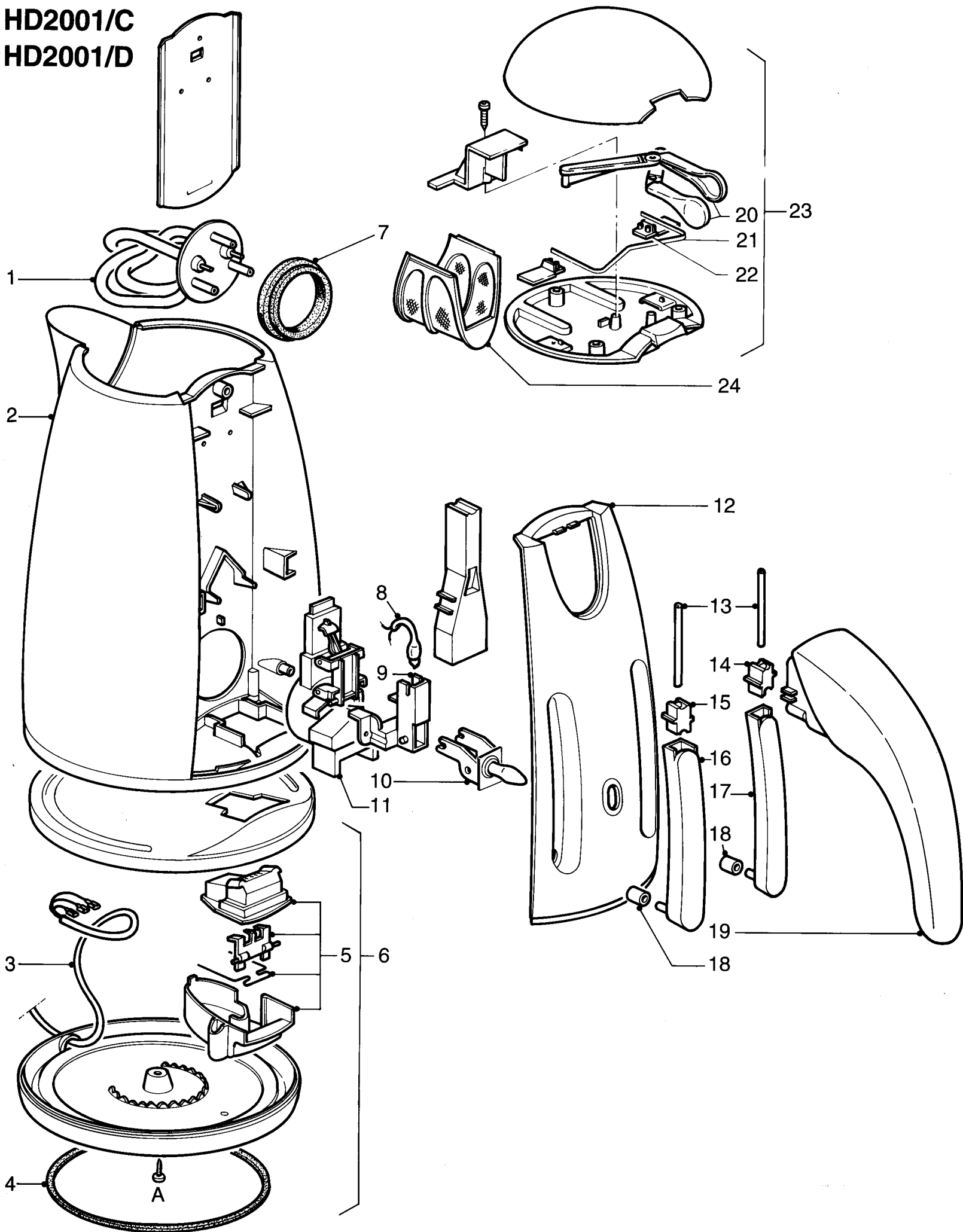
The base unit (item 6) is fixed with a "Torx" screw (A).
The suitable screwdriver can be ordered from Consumer
Service under number 4822 395 50449.

2. Lamp unit

The small snap-ons on the wires of the lamp unit
(item 8) have to be fitted on the terminals of the control
unit (item 11) in a certain orientation. Proper fixation of
the snap-ons has to be checked afterwards by carefully
pulling at the snap-on



HD2001/C
HD2001/D



1	4822 259 20463	Element	Stainless steel	230V
-	4822 259 10236	Element	Stainless steel	110-120V
-	4822 259 10237	Element	Stainless steel	100V
2	4822 441 31328	Body		green
4	4822 530 51355	O-ring for base		
5	4822 290 61218	Mains contact unit		
6	4822 441 31333	Base	EU plug	230V
-	4822 441 31331	Base	UK plug	240V
-	4822 441 11619	Base	CH plug	220V
-	4822 441 31397	Base	AU plug	240V
-	4822 441 31398	Base	KO plug	220V
-	4822 441 10253	Base	JP plug	100V
7	4822 466 62587	Sealing ring		
8	4822 134 41199	Lamp unit		220-250V
-	4822 134 10042	Lamp unit		110-120V
-	4822 134 10073	Lamp unit		100V
9	4822 404 40826	Switch carrier		
10	4822 404 40829	Switch pivot		
11	4822 690 80143	Control unit		
12	4822 441 31332	Cover		green
13	4822 530 10236	Tube		
14	4822 530 40519	Boot upper		
15	4822 530 40519	Boot upper		right
16	4822 530 10237	Tube printed		left
17	4822 530 10238	Tube printed		right
18	4822 530 40521	Boot lower		
19	4822 498 10522	Handle		red
21	4822 492 11405	Spring		
22	4822 404 40828	Lid latch		
23	4822 441 31329	Lid unit		
24	4822 480 50532	Filter	(Commercial trade number HD 4964)	