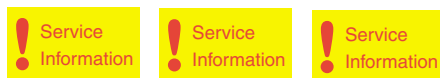


# Service Service Service



**Sunmobile 4s**



Domestic Appliances and Personal Care

# Service Manual

## TECHNICAL DATA

Input voltage	: 220-230V 50Hz
Input consumption	: approx. 2100W
Fuse	: min. 16A slow
UVA source	: 4X HPA400/118mm
Ballast	: 2X 400W 2X 500W
Starter	: 4X SN58-spec.
Timer	: digital 30 mins
Cooling	: 1X fan floor part 3X fan tanning part
Radiation area	: 190 X 70 cm
Output (min) at 65 cm	: 5.6 mW/cm <sup>2</sup> LMV 2.4 mW/cm <sup>2</sup> HEBRU
Protecting goggles	: 2X HB072
Safety	: CENELEC insulation class 2 UV type 3
Weight	: approx. 40 kg

AS THE APPLIANCE IS HIGHLY SUSCEPTIBLE TO SCRATCHING, YOU SHOULD BE EXTRA CAREFUL DURING DISASSEMBLY.

TO PREVENT THE MULTI-CORE CABLES FROM GETTING DAMAGED AT THE HINGES, THEY MUST BE ASSEMBLED AND CLAMPED AT THE ORIGINAL PLACES.

MSH CODING 8843 871 00000 HB 871

Published by Philips Domestic Appliances and Personal Care

Printed in The Netherlands

© Copyright reserved

Subject to modification

4822 729 21903

98/01

PCS 98 062



# PHILIPS

## DISASSEMBLY

AS THE APPLIANCE IS HIGHLY SUSCEPTIBLE TO SCRATCHING, YOU SHOULD BE EXTRA CAREFUL DURING DISASSEMBLY.

BY INTERCHANGING IT CAN BE FOUND OUT WHETHER A LAMP, BALLAST OR STARTER IS DEFECTIVE.

### 1. FLOOR PART (item 32)

- Remove the cord holders (item 26) and detach the cord clamps at the back.
- Remove the covers (item 27 and 34).  
The cover on the flex side can only be removed last.

### 2. REMOTE CONTROL (item 36)

- Remove the cord holder and pull the connector loose.

### 3. WHEEL (item 46)

- Remove the covers (item 27,34).
- Remove the locking plate and the nearest frame screw.
- Push the shaft out of its clamping.

### 4. GAS SPRING (item 12)

- Remove the covers (item 27,34).
- Put the appliance in its highest operating position (to ensure that no pressure is exerted on the gas spring) and tighten the ornamental screw (item 24).
- Loosen the 8-core cable so that the cable can easily slide through the cable duct.
- Remove a retaining ring from the hinge shaft at A.
- Tilt the appliance carefully so that the radiation part rests on the floor.
- Support the floor part to remove the pressure from the hinge shaft.
- Remove the hinge shaft and lower the floor part onto the floor.
- Remove the 2 bearing bushes.
- Loosen the ornamental screw (item 24), slide the top part of the stand approx. 20 cm inwards and tighten the screw again.
- Remove the 2 screws from the upper part of the stand at B and pull this part loose from the hinge.
- After the shafts have been removed, the gas spring can be slid out of the stand.

### 5. HIGHT ADJUSTMENT (item 25)

- Loosen the lower attachment of the gas spring in the manner described under 4.
- Remove the cord with its clamping by pressing the snap clamping on the inside.
- Remove the outer tube.
- Remove the 2 guide blocks and slide the clamping block from the inner tube.

### 6. HINGE WITH GAS SPRING (item 11)

- Remove the stand part in the manner described under 4 and 5.
- Remove the upper ornamental strips from the hinge part.
- Remove the cover (item 15) from the radiation part.
- Remove the cover from the connector compartment.
- Detach the 8-core cable.
- Remove the retaining ring from the locking shaft at C and push the shaft out of the stand.
- Remove the hinge part.

## **7. HPA LAMP** (item 21)

- Remove the glass filter from the lamp unit in question.  
The lamp unit will continue to cling to the upper part.
- Remove the reflector clamps.
- Remove the reflector and take the lamp from the holder.

NB: When checking or replacing HPA lamps, pay attention to the following:

- HPA lamps only start burning when they have cooled down sufficiently.
- Never touch a lamp with your fingers. Clean the lamp with a cloth moistened with alcohol, if necessary.
- After assembly the glass filter should be free from finger prints and dust. Clean the glass filter with a cloth moistened with alcohol, if necessary.

## **8. COVER OUTER SECTION** (item 17)

- Remove the cover (item 15) and the cover of the connector compartment.
- Detach the wires of the outer section.
- Support this section and remove the 3 fixing screws at D.

## **9. COVER INNER SECTION** (item 1)

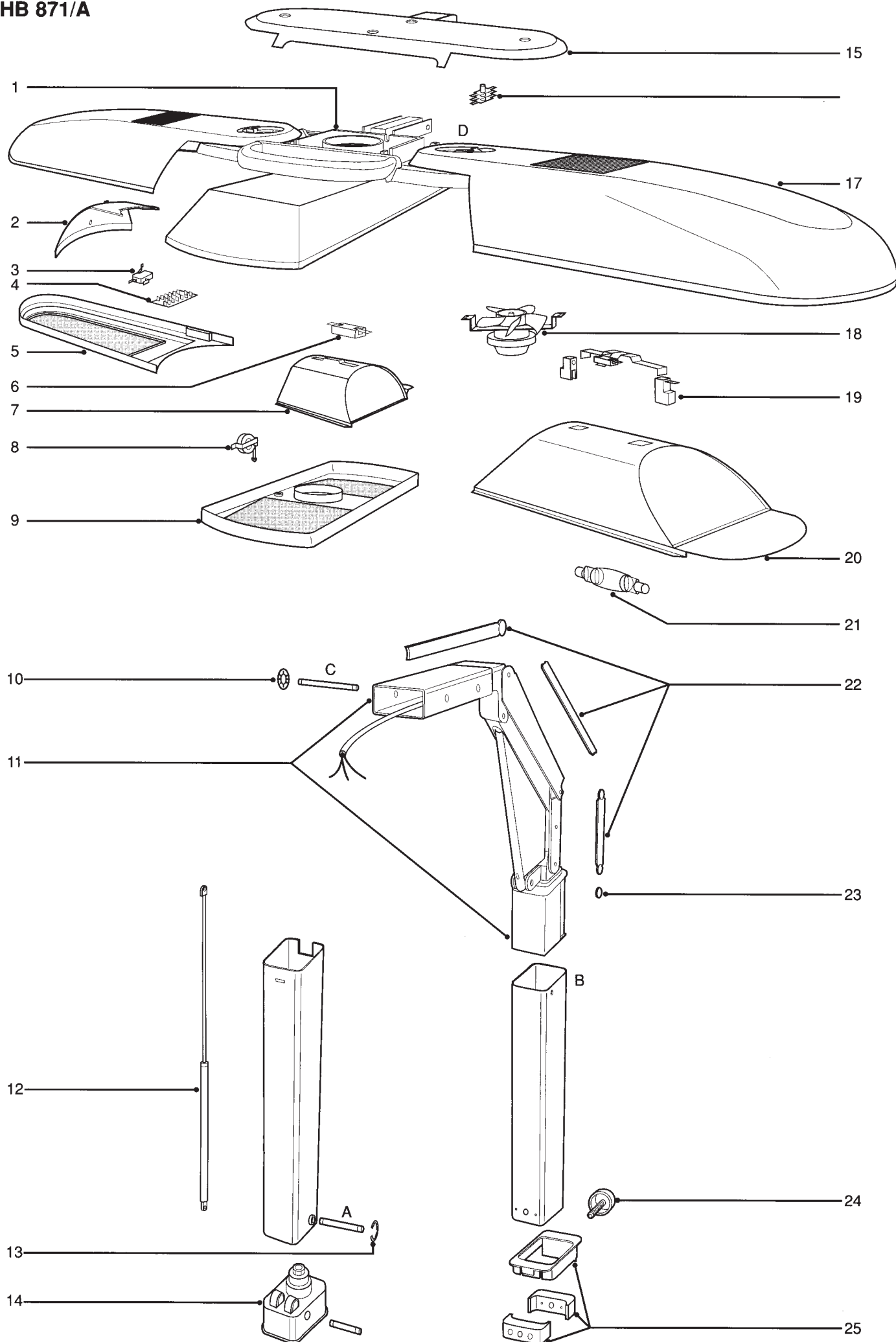
- Disassembly of the cover is not advisable, since the non-visible parts of the pivot can only be fitted with special tools.  
For this reason, the cover is supplied as a whole with grip plate and wiring.
- Remove the centre glass filter and assemble it onto the new cover.
- Remove the outer sections (see under 8) and attach them to the inner section.
- Detach the wiring that runs through the tube of the stand.
- Remove the upper ornamental strips.
- Remove the retaining ring from the locking shaft at C and push the shaft out of the stand.
- Pull the inner section out of the stand.

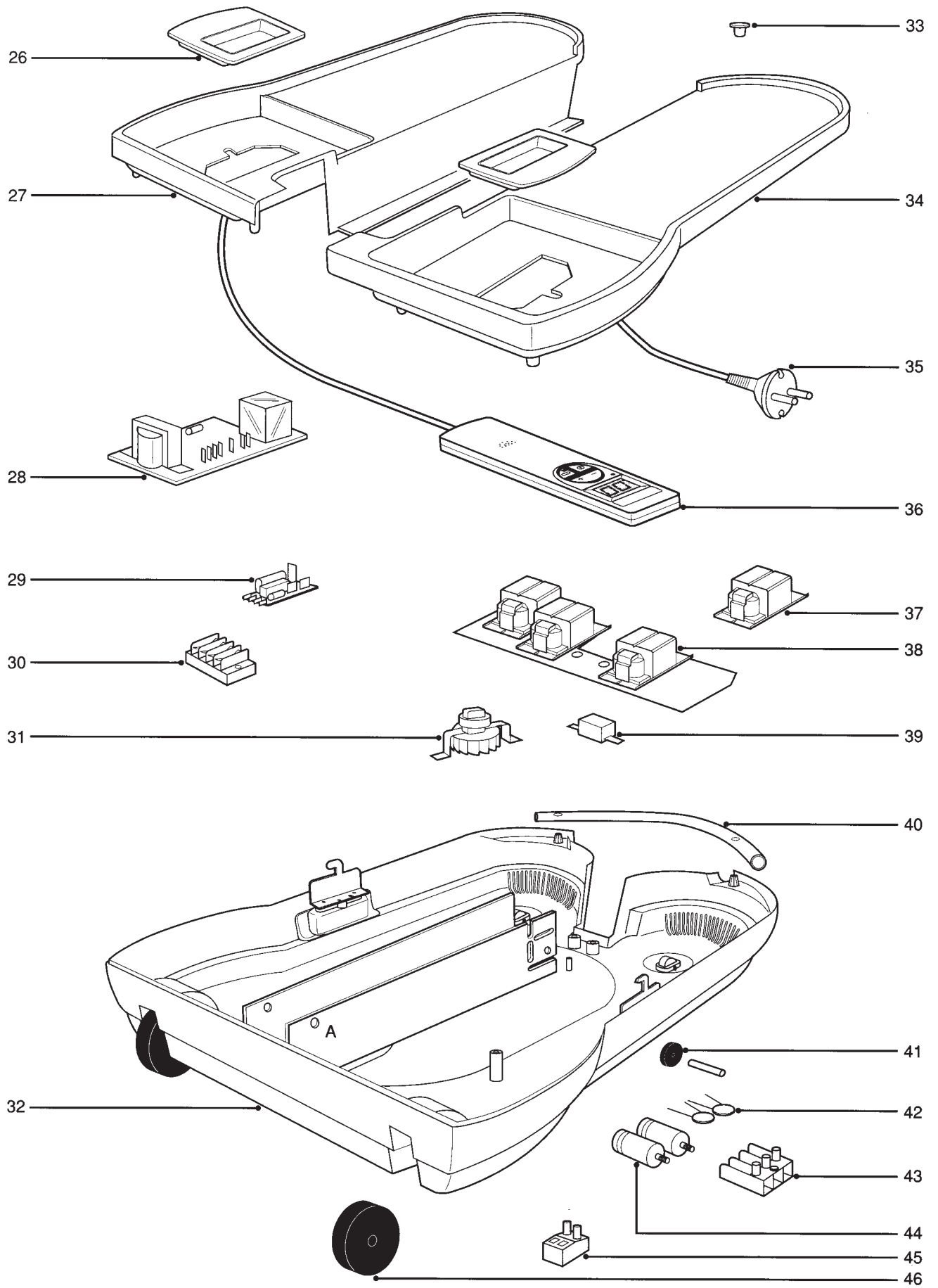
## **ASSEMBLY**

TO PREVENT THE MULTI-CORE CABLES FROM GETTING DAMAGED AT THE HINGES, THEY MUST BE ASSEMBLED AND CLAMPED AT THE ORIGINAL PLACES.

1	4822 441 12113	housing with grip
2	4822 442 01238	end cover
3	4822 271 30619	microswitch
4	4822 214 12662	14-tabs pcb
5	4822 441 12112	lamphousing L/R
6	4822 252 11236	aut. cutout 120C
7	4822 380 10228	reflector M
8	4822 450 10449	distance indicator
9	4822 441 12111	lamphousing M
10	4822 530 70444	spring washer
11	4822 417 11368	hinge complete
12	4822 529 10401	gasspring
13	4822 530 70126	retaining ring
14	4822 401 11733	flex clamping
15	4822 498 10689	grip cover
16	4822 265 11215	tab connector
17	4822 442 01237	cover L/R
18	4822 361 11042	fan complete
19	4822 325 20102	lampholder
20	4822 380 10229	reflector L/R
21	4822 134 30032	HPA-400 lamp
22	4822 454 13268	orn. strips (2X3)
23	4822 462 11022	orn. cap
24	4822 410 11681	adj. screw
25	4822 401 11732	clamping unit
26	4822 256 10435	flexholder L/R
27	4822 442 01236	cover R.C.-side
28	4822 218 11844	power module
29	4822 219 80605	starter SN58/spec
30	4822 265 11214	conn. block 4S
31	4822 361 11041	fan complete
32	4822 441 12109	housing floorpart
33	4822 462 11021	orn. prop
34	4822 442 01235	cover flex-side
35	4822 321 11395	mains flex
36	4822 219 10436	remote control
37	4822 146 10935	ballast 500W/230V
38	4822 142 60417	ballast 400W/230V
39	4822 252 11301	aut. cutout 75C
40	4822 498 10688	bar grip
41	4822 528 70519	wheel small
42	4822 116 30297	NTC resistor
43	4822 265 30284	conn. block 3S
44	4822 124 40701	capacitor
45	4822 265 20234	conn. block mains
46	4822 528 11215	wheel large
	4822 690 80147	HB072 prot. goggles

# HB 871/A





# HB 871/A

