

Service
Service
Service



Philips Domestic Appliances and Personal Care

Service Manual

PRODUCT INFORMATION

Features

Iron

Professional

- Aluminium soleplate
- Max. steam output 60 g/min
- Shot of steam (SOS)
- Cord length 1.9 m

Boiler

- Inox boiler
- Capacity 1.0 litres
- Vario steam
- Steam ready indicator

TECHNICAL INFORMATION

Voltage : 220 - 240 V

Frequency : 50 - 60 Hz

Power consumption : Iron : 700 W
Boiler : 1200 W
Pressure : 3.0 bar

Water advice : Suitable for tap water use. However if the tap water in your area is very hard, we advise you to mix it with a equal portion of distilled water or to use distilled water only.

Vertical Steam

When the iron is kept in a vertical position, the shot of steam (S.O.S) button can be used to iron hanging fabrics such as curtains.

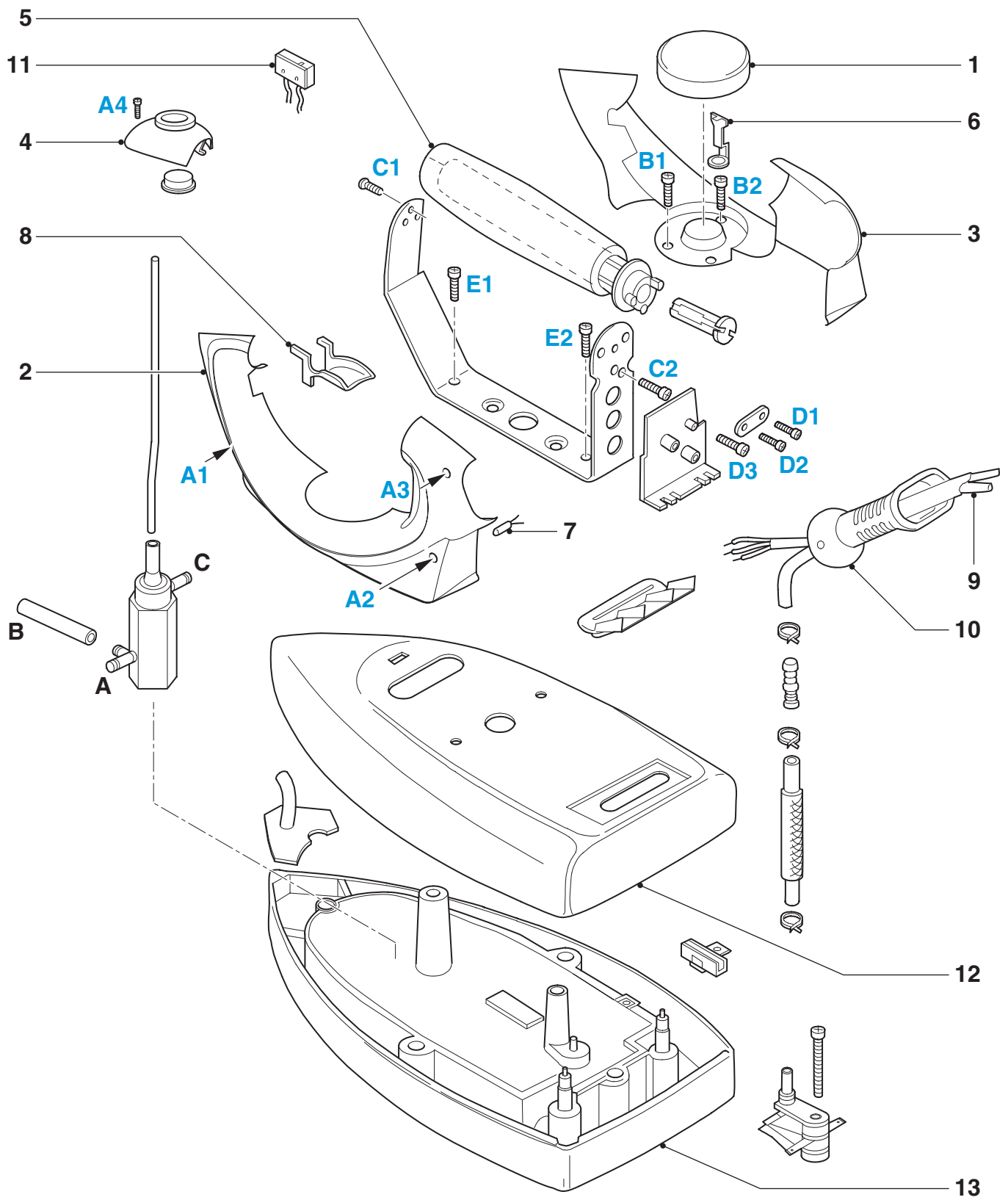
Vario steam

The vario steam function allows user to have control over the steam rate and this prevent over moisturising the cloth.

This product meets the requirement regarding interference suppression on radio and television.

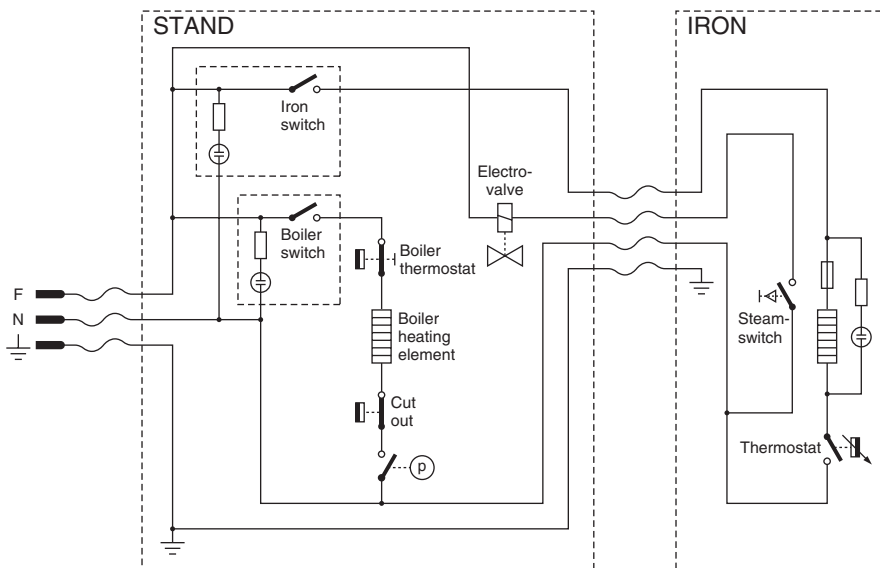


EXPLODED VIEW IRON



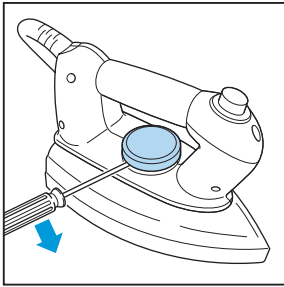
PARTS LIST IRON

Pos	Description	Service code
1	Dial	9965 000 13323
2	Iron Handle - Left part	9965 000 13324
3	Iron Handle - right part	9965 000 13325
4	Inlay	9965 000 13326
5	Cork handle	9965 000 13300
6	Thermostat joint	9965 000 13301
7	Iron Lamp	9965 000 13305
8	Steam trigger	9965 000 13306
9	Intermediate cable	9965 000 13307
10	Swivel	9965 000 13328
11	Micro switch	9965 000 13308
12	Iron metal skirt	9965 000 13309
13	Soleplate unit (professional)	9965 000 13310



DISASSEMBLY ADVISE IRON

REPLACE DIAL I



**IRON HANDLE 2
+
IRON HANDLE 3**

INLAY 4

IRON LAMP 7

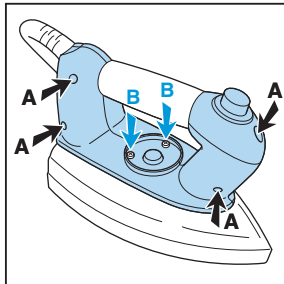
STEAM TRIGGER 8

MICRO SWITCH 11

disassemble **DIAL I**

remove **screw A (4x)**

remove **screw B (2x)**



CORK HANDLE 5

disassemble **DIAL I**

remove **screw A (4x)**

remove **screw B (2x)**

disassemble **IRON
HANDLE 2 +
IRON
HANDLE 3
INLAY 4**

remove **screw C (2x)**

**INTERMEDIATE
CABLE 9**

SWIVEL 10

disassemble **DIAL I**

remove **screw A (4x)**

remove **screw B (2x)**

disassemble **IRON
HANDLE 2 +
IRON
HANDLE 3
INLAY 4**

remove **screw C (2x)**

disassemble **CORK
HANDLE 5**

remove **screw D (3x)**

**IRON METAL
SKIRT 12**

SOLEPLATE UNIT 13

disassemble **DIAL I**

remove **screw A (4x)**

remove **screw B (2x)**

disassemble **IRON
HANDLE 2 +
IRON
HANDLE 3
INLAY 4**

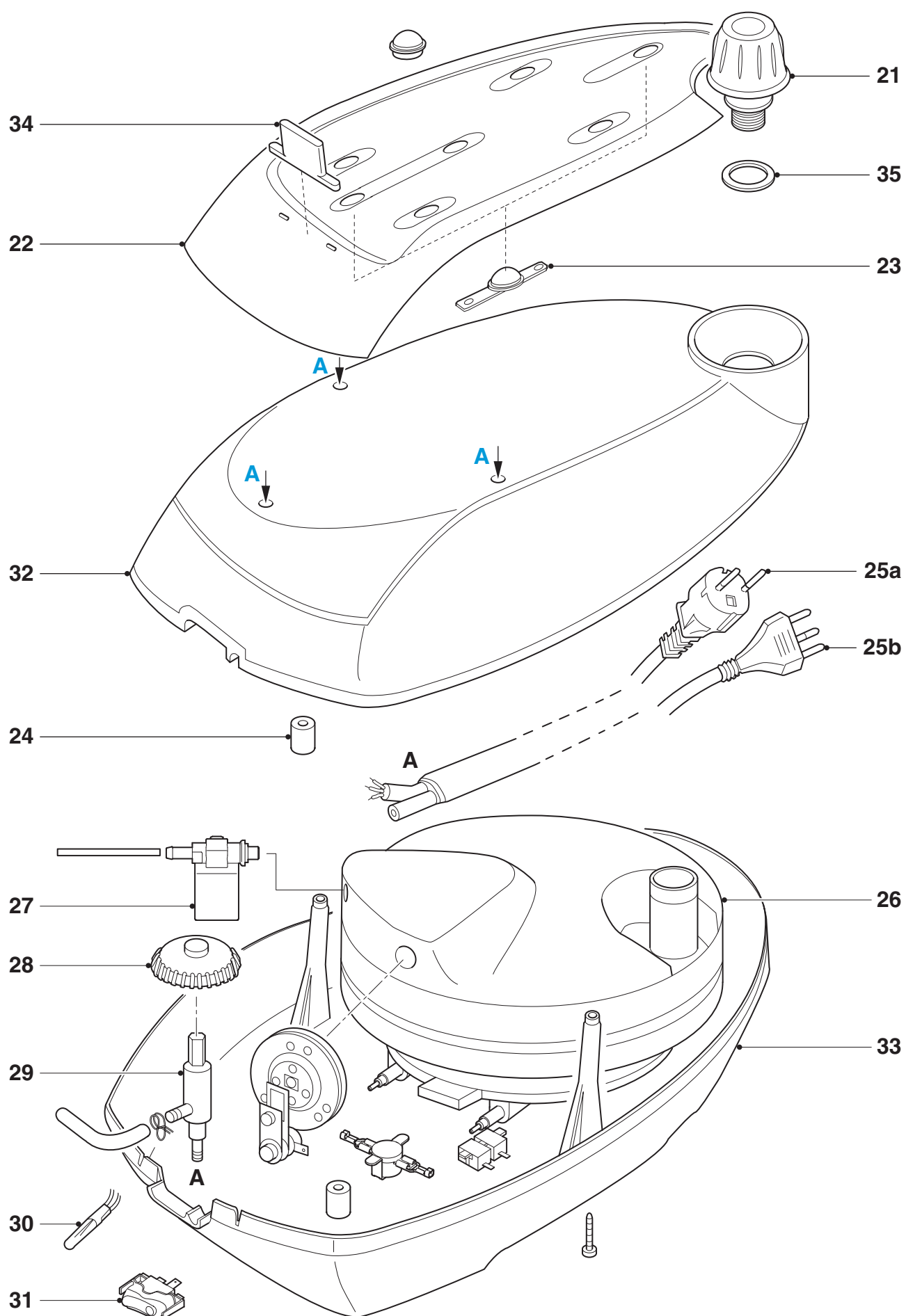
remove **screw C (2x)**

disassemble **CORK
HANDLE 5**

remove **screw D (3x)**

remove **screw E (2x)**

EXPLODED VIEW STAND

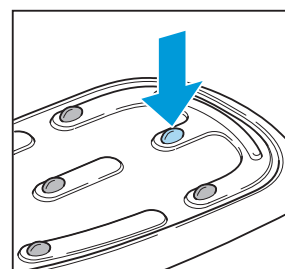


PARTS LIST + DISASSEMBLY ADVICE STAND

Pos	Description	Service code
21	Safety cap	9965 000 13247
22	Complete tray	9965 000 13248
23	Tray rubber foot	9965 000 13249
24	Boiler rubber foot	4822 462 71999
25a	Intermediate supply cable (Europe)	9965 000 01793
25b	Intermediate supply cable (Italy)	9965 000 01792
26	Inox boiler unit	9965 000 13250
27	Electrovalve	4822 218 11561
28	Steam Dial	9965 000 13272
29	Steam regulator	9965 000 01900
30	Lamp	9965 000 13273
31	Main switch	9965 000 13251
32	Superior stand printed GC 6024	9965 000 14757
33	Inferior stand	9965 000 14758
34	Tray stopper prevent Iron from sliding	9965 000 13254
35	Filling hole gasket	9965 000 01782

SAFETY CAP 21

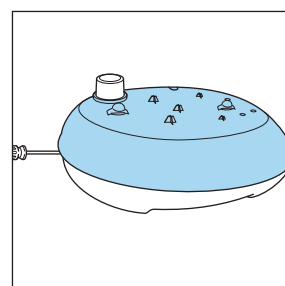
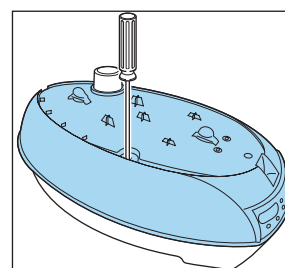
COMPLETE TRAY 22



Note: pressure fixation rubber through the tray.

SUPERIOR STAND PRINTED 32

Remove screws **A** (4x)



Remove the SUPERIOR STAND and you will see the respective parts of the Boiler.

ADJUSTMENT AND CONTROLS

- To avoid leakage of the sealings and damage to the components in and on the boiler, **NEVER** clean the boiler with vinegar, a descaling agent or other chemicals.
- The boiler doesn't contain serviceable parts. **Never disassemble the boiler body or components and/or components on and in the boiler.**
- The boiler is required to be rinsed after every ten times use.
- **ALWAYS REPLACE BOILER (Pos 26) WHEN:**
 - * the mechanical safety valve has been activated.
 - * the boiler thermostat or hand –resettable safety thermostat are open.
 - * the electrovalve fails or the sieve is soiled with scale.
- After the product has been repaired, it should function properly and has to meet the safety requirements as laid down and officially established at this moment.