



Philips Domestic Appliances and Personal Care

Service Manual

PRODUCT INFORMATION

- Colour version /01/A : Fuchsia
- Electronically controlled motor speed
- Built-in cord winder
- Dustbag-full indicator in dust cover
- This product meets the requirements regarding interference suppression on radio and TV.
- After the product has been repaired, it should function properly and has to meet the safety requirements as officially laid down at this moment.

TECHNICAL INFORMATION

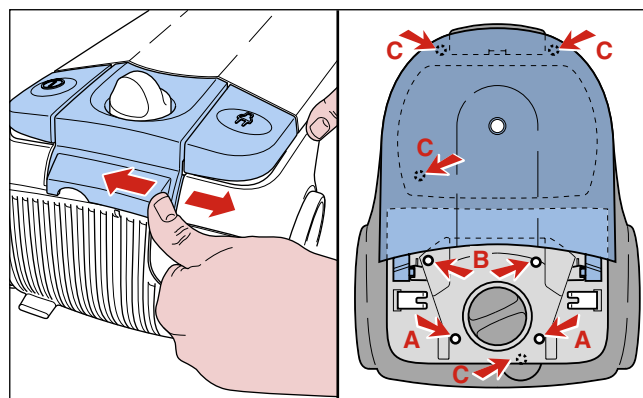
- Maximum air displacement : 32 l/sec.
- Maximum vacuum water column : 350 cm
- Power consumption (IEC) 225V : 1400 W
- Dust storage capacity : 2 litres
- Cord length (depends on version) : 6.3 m
- Filter system : 5 filters
- Dimensions cleaner : 37 x 28 x 23 cm
- Net weight : 4.8 kg
- Noise : 80 dB max.

OPTIONAL (accessories)

- | | | |
|----------|---------------------|----------------|
| - FC8032 | Exhaust air filter | 4822 015 70056 |
| - HR6997 | S-Cotton dustbag | 8836 997 01010 |
| - FC8021 | S-Paper dustbag | 4822 480 10113 |
| - FC8022 | S-Clinic dustbag | 8838 022 01010 |
| - FC8023 | S-Anti odor dustbag | 8838 023 01000 |

DISASSEMBLY- AND RE-ASSEMBLY ADVISE

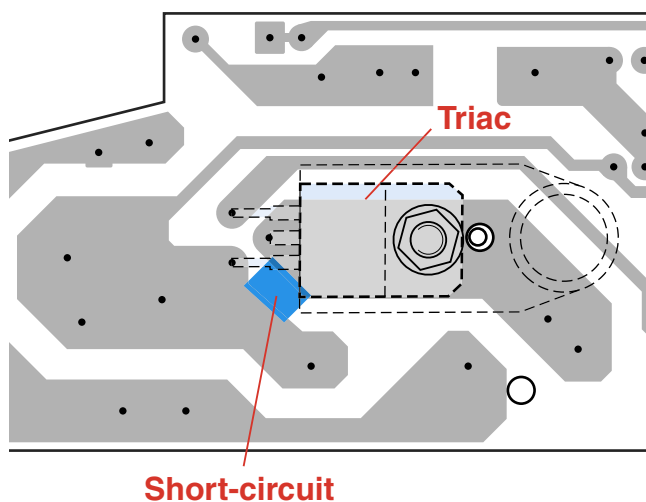
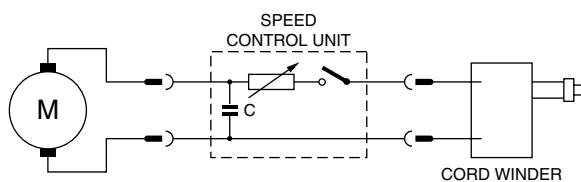
- Push the button panel (item 1) sideways to release it from the locking peg of the upper housing (item 3).
- When the button panel has been removed, you have access to the screws that need to be undone to disassemble the housing.



- Lift the motor housing (item 26) out of the lower housing and take out the cord winder unit.
- To disassemble the cord winder, use TORX screwdriver no. T10, which is one of a set consisting of T20; T15; T10; T9; T8; T7 and T6 (code number 4822 395 50145).

- The spare parts have been standardized as much as possible.
- Cotton dustbags are used in countries where paper dustbags are unobtainable.
- If the reel half spring unit is replaced, shaft **F** must be lubricated with **silicone grease**. Do not apply any silicone grease to or spill any grease on terminals (**item 35**) or conductors (**item 34**).
- **Item 33** is provided with a long cord-winder spring, but both long and short cords can be used in combination with this spring. (L = 9.3 m)
- Depending on the length of the original cord, the spare cord may have to be shortened.
- The cord winder spring must be tensioned to the maximum level and then be rewound approx. 1.5 turn.
- The RPM can be adjusted by means of the potentiometer mounted on the PCB (**item 23**). The RPM is correctly adjusted if the motor starts automatically and continues to run smoothly with the ON/OFF position and the adjustable potentiometer in minimum position.
- If the function of the electronic control unit (**item 23**) is not required, the Triac must be short-circuited in the manner shown in the circuit diagram.
- When the vacuum cleaner is used to suck up fine dust, the pores of the dustbag may become clogged, causing the passage of air through the dustbag to become obstructed. As a result, the dustbag-full indicator will indicate that the dustbag needs to be replaced, even though the dustbag is not full at all.

ELECTRICAL DIAGRAM

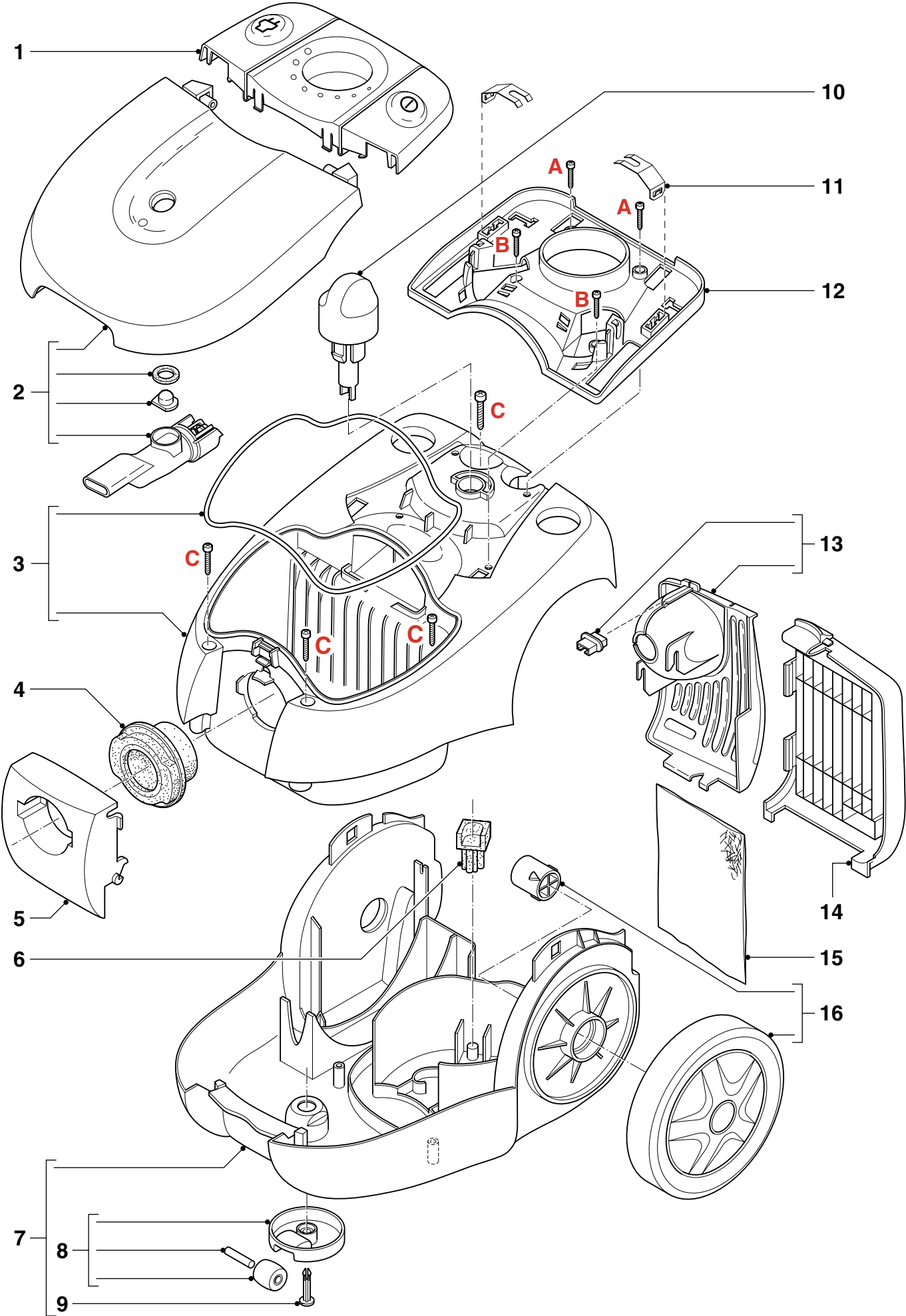


PARTS LIST

FC8394

Pos	Service code	Description	
1	4322 003 23950	Button panel	Fuchsia
2	4322 009 09280	Dustcover	Fuchsia
3	4322 009 09210	Upper housing (el)	
4	4322 001 73150	Inlet rubber	
5	4322 003 17250	Nose piece	
6	4322 001 72900	Motor buffer	
7	4322 009 09190	Lower housing assy	
8	4322 005 17100	Caster disc assy	
9	4322 003 17230	Fixing pin	
10	4322 005 16880	Vario knob assy	
11	4341 000 65180	Button leaf spring	
12	4322 003 23550	Hinge frame	
13	4322 009 07730	Cord outlet (grey)	
14	4322 003 17320	Back grille (grey)	
15	4822 015 70056	AFS filter	
16	4322 009 09250	Wheel	
17	4341 004 92090	Non woven dustbag	
	8838 022 01010	Clinic S-bags	
	8838 021 00000	Paper dustbags	
18	4341 005 01720	Dustbag holder	
19	4322 000 35360	Duo filter	
20	4341 005 01740	Safety filter assy	
21	4322 001 73160	Motor cover sealing	
22	4322 005 17130	Switch lever assy	
23	4322 006 22730	PCB 220-240 V 50/60 Hz	
	4322 006 20080	PCB L.V.	
24	4322 006 50600	Switch	
25	4322 001 73230	AP cooling connection	

Pos	Service code	Description	
26	4322 003 24160	Motor cap	
27	4322 001 72780	Buffer ring front	
28	4322 009 06430	Motor 1451 230-240 V	
	4322 009 06770	Motor 1241 120 V/60 Hz	
29	4322 009 07520	Motor foam / disc	
30	4322 003 06620	Pushrop AP eco	
31	4322 001 72360	Brake tyre	
32	4322 009 07640	Base plate assy	
33	4322 009 07610	Rear half spring side	
34	4322 009 07620	Rear half contact side	
35	4341 005 00740	Contact plate assy	
36	4322 006 01770	Cordset Taiwan/Japan	5.3 m
37	4322 006 02100	Cordset UK/HK	6.3 m
38	4322 006 01400	Cordset Europe 4.8 mm	6.3 m
39	4322 006 01480	Cordset Swiss	6.3 m
40	4322 003 20730	tube clip 35 mm	(opt.)
41	4322 004 22990	telesc. tube	(opt.)
42	4341 003 00240	tube clip 32 mm	
43	4341 000 65130	steel tube chr.	
44	4341 004 20420	hose	
45	4341 005 01240	bend handle	
46	4341 004 20170	crevice nozzle	
47	4341 003 02470	accessoire clip	
48	4341 004 20100	small nozzle	
49	4341 004 20440	big nozzle D272	
50	4822 479 20039	nozzle brush	
51	4822 479 20038	nozzle strip	



EXPLODED VIEW

FC8394

