

Service
Service
Service



Philips Domestic Appliances and Personal Care

Service Manual

PRODUCT INFORMATION

Shaving system

- Lift & cut system
- Individually floating heads
- Micro + shaving heads
- Silent power
- Hair collecting chamber

Power system

- Up to 30 minutes cordless shaving time

Luxe

*

Safety information

- This product meets the requirements regarding interference suppression on radio and TV.
- After the product has been repaired, it should function properly and has to meet the safety requirements as officially laid down at this moment.

TECHNICAL INFORMATION

- Voltage : 100 - 240 V
- Loading time : 8 hours
- Shaving heads : 2 x HQ4
- SAP coding : HQ46

DISASSEMBLY- AND RE-ASSEMBLY ADVISE

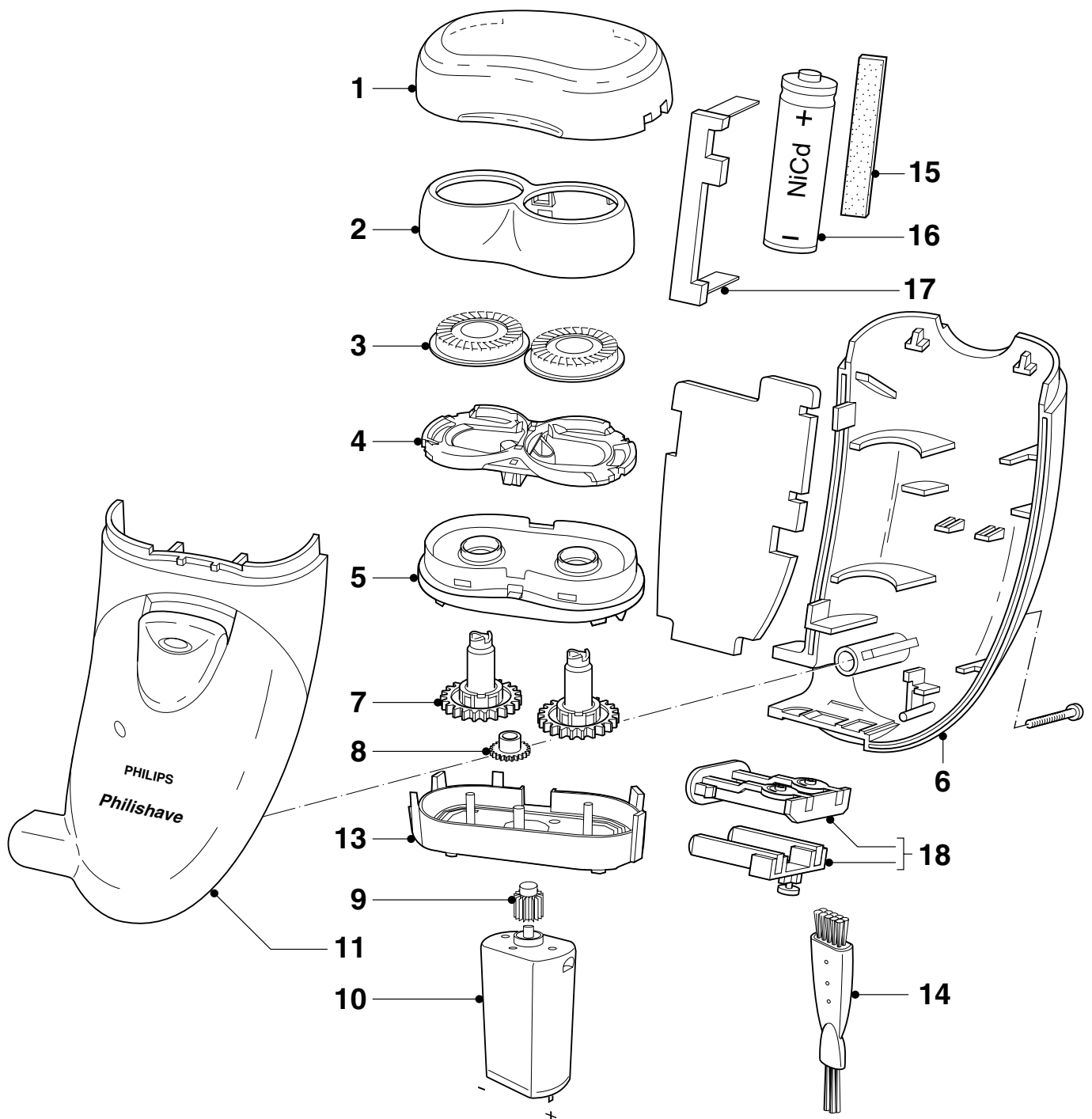
- No specific issues

REPAIR INSTRUCTION

- No specific issues

OPTIONAL (accessories)

- No specific issues



Pos	Service code	Description
1	4222 036 09350	protecting cap
2	4222 036 09360	head housing
3	4222 036 05450	shaving heads
4	4222 036 07170	head holder assy
5	not available	hair chamber assy
6	not available	housing
7	not available	gear assy
8	not available	interm. Gearwheel
9	not available	pinion

Pos	Service code	Description
10	not available	motor assy
11	not available	cover
13	not available	motor frame
14	4822 479 30183	cleaning brush
15	4822 466 12236	foam plate
16	4822 138 10336	1 AA cel NiCd
17	not available	contact plate
18	4222 036 01610	plug pins