



Philips Domestic Appliances and Personal Care

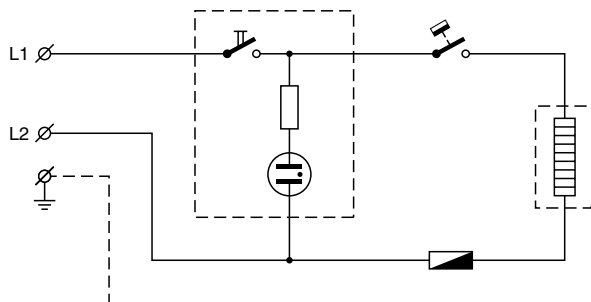
# Service Manual

## PRODUCT INFORMATION

- This product meets the requirements regarding interference suppression on radio and TV.
- After the product has been repaired, it should function properly and has to meet the safety requirements as officially laid down at this moment.

## TECHNICAL INFORMATION

- Voltage : 100 V, 120 V  
: 220 - 240 V
- Frequency : 50 - 60 Hz
- Power consumption : 900 - 1100 W
- Contents jug : 1200 cc
- Coloursetting : Ivory
- Filter size : 1 x 4
- Thermostat switch-off temp : 140 °C
- Fuse cut-off temp : 227 °C
- SAP coding : HD7524/60/B



## DISASSEMBLY AND RE-ASSEMBLY ADVISE

- **Base removal**  
Besides three screws, three plastic snap connections have to be detached by means of using a simple screwdriver, as indicated on the base of the appliance

## REPAIR INSTRUCTION

- **Electrical circuit**  
When the appliance does not work, check the electrical circuit. If the thermal fuse or thermostat prove defective, the complete pump unit has to be replaced.
- **De-scaling**  
If the water system is nearly or less clogged by scale then operate the coffeemaker a few times with vinegar or with a 10-15% solution of either vinegar-acid, citric acid or tartaric acid, into cold tap water.

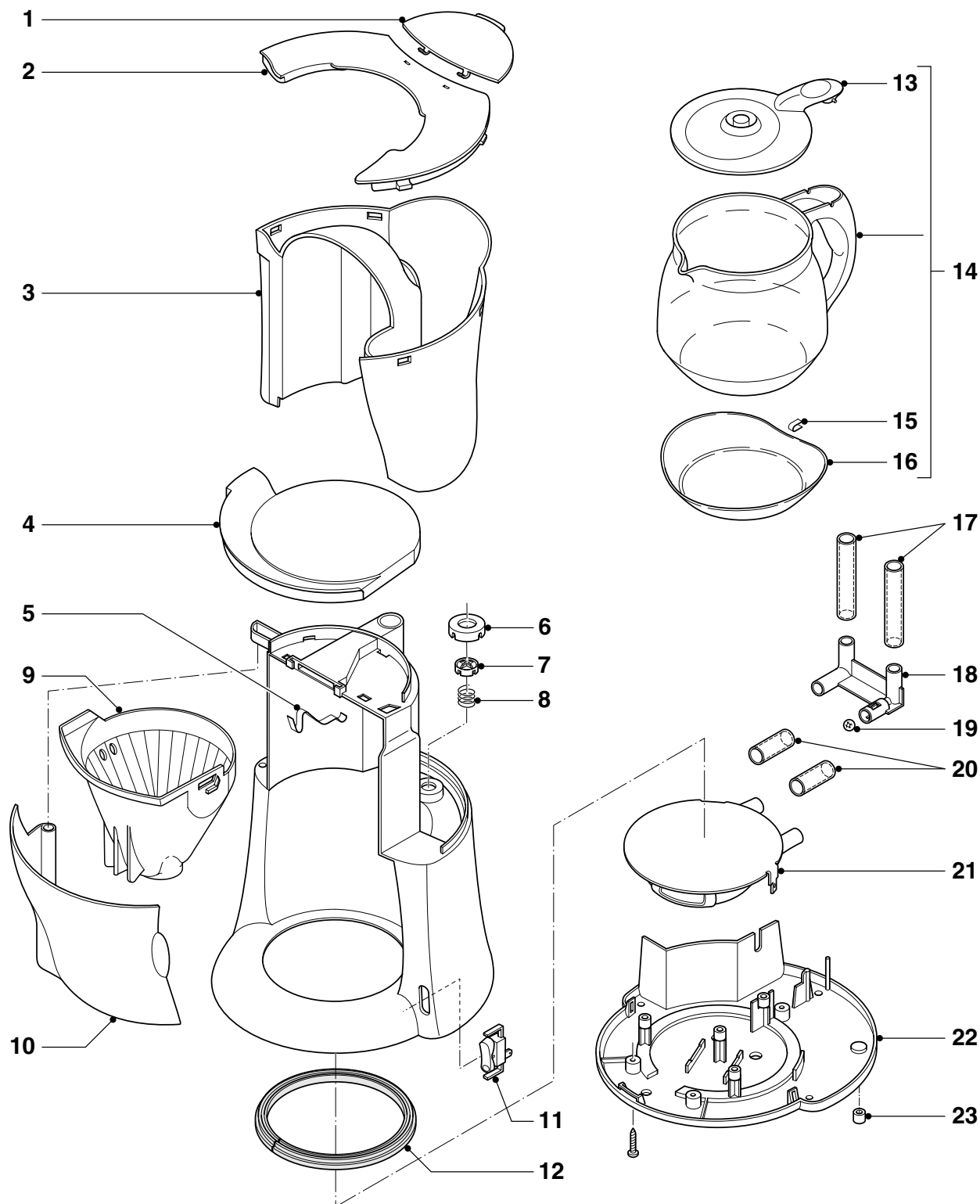
**Do not use other de-scaling agents** as these may harm the appliance.

If this procedure does not restore the function, then switch off the coffeemaker when the acid has passed through during appr. 3 min. Keep the appliance in this condition overnight and continue/repeat the cleaning operation. After the de-scaling procedure, operate the coffeemaker twice with tap water in order to rinse away any residual substances.

## OPTIONAL (accessories)

- Commercial trade number jug + lid + buffering : HD7977/60

## EXPLODED VIEW &amp; PARTS LIST

HD7524/60  
/B

Pos	Service code	Description	
1	9965 000 09521	Tank lid blue	/A /B
2	9965 000 16717	Tank cover, ivory	/B
3	9965 000 16712	Tank, blue	/A /B
4	9965 000 09525	Cover, ivory	/A /B
5	9965 000 15556	Spring Filter holdbracket	/B
6	9965 000 09505	Seal cover	/A /B
7	9965 000 09506	Locking plate	/A /B
8	9965 000 09507	Spring valve	/A /B
9	9965 000 16700	Filter without cap	/B
10	9965 000 16718	Filter cap ivory	/A /B
11	9965 000 09524	Switch + lamp 230 V	/A /B
	9965 000 16708	Switch + lamp 125 V	/B
12	9965 000 09509	Seal heatingplate	/A /B
13	9965 000 16719	Jug lid, blue	/B

Pos	Service code	Description	
14	9965 000 09520	Jug + lid + buffer, blue	/A /B
15	9965 000 09530	Spring buffering	/A /B
16	9965 000 16720	Buffering, blue	/B
17	9965 000 16705	Hose piece 8 x 2	/B
18	9965 000 15561	Connecting piece	/B
19	9965 000 15562	Ball	/B
20	9965 000 15563	Hose piece 9.8 x 2.7	/B
21	9965 000 16706	Pump 230 V	/B
		/A(only with base /B)	
	9965 000 16709	Pump 120 V	/B
	9965 000 16710	Pump 100 V	/B
22	9965 000 16707	Base	/B
23	9965 000 15566	Foot	/A /B