

Service
Service
Service



Philips Consumer Lifestyle

Service Manual

PRODUCT INFORMATION

General:

- Rechargeable total body grooming system
- World wide automatic voltage selection
- Washable
- 5 integrated length setting
- Cordless use only

Safety information

This product meets the requirements regarding interference suppression on radio and TV.

After the product has been repaired, it should function properly and has to meet the safety requirements as officially laid down at this moment.

TECHNICAL INFORMATION

- Mains : Voltage - Input : 100 - 240 V / 50 - 60 Hz
- Output : 15 V
- Power system : Rechargeable
- Batteries : NiMh
- Charging time : 8 hours
- Capacity : up to 50 minutes
- Motor voltage : 2,4 Volt

REPAIR INSTRUCTION

- No specific issues

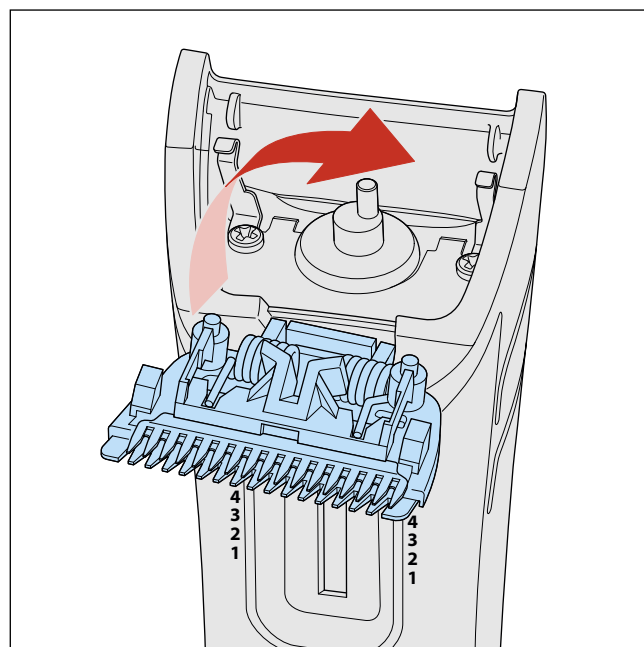
OPTIONAL (accessories)

- No specific issues

DISASSEMBLY- AND RE-ASSEMBLY ADVICE

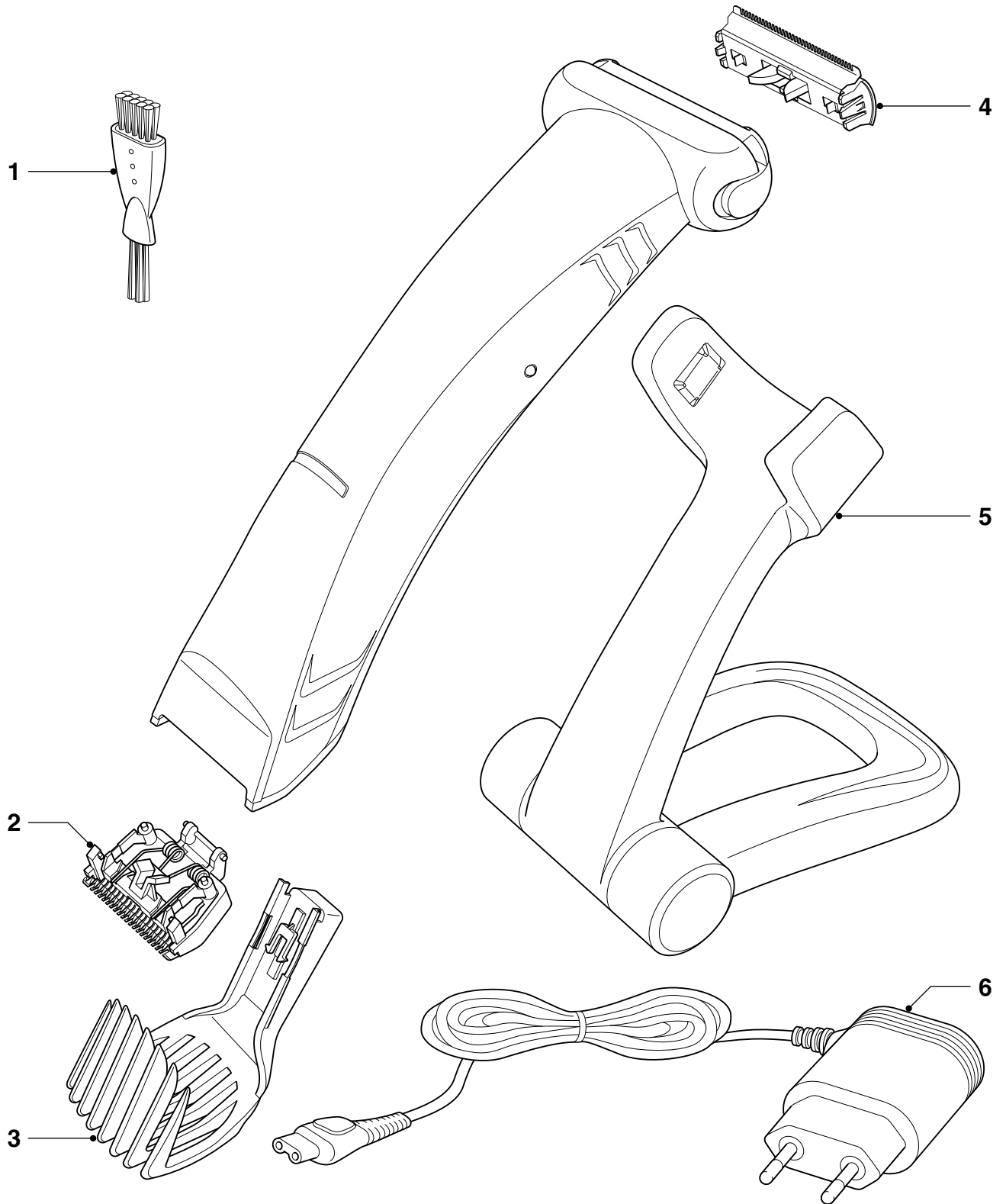
Disassembly

1. Remove comb.
2. Open trimmer.
3. Remove trimmer by turning the trimmer to the left or the right. (see picture)



Re-assembly

- Do this opposite.



Pos	Service code	Description
1	4222 036 02770	Brush
2	4222 036 17461	Cutter
3	4222 036 17471	Comb
4	4203 035 51110	Shaving unit
5	4222 036 17481	Stand
6	4222 036 04080	Power Plug EUR
	4222 036 05160	Power Plug NOR
	4222 036 05120	Power Plug AUS/NZ

Pos	Service code	Description
6	4222 036 04090	Power Plug GBR
	4222 036 05110	Power Plug CAN/TW
	4222 036 03810	Power Plug MEX
	4222 036 04850	Power Plug KOR
	4222 036 03870	Power Plug JAP
	4222 036 10320	Power Plug PRC
	4222 036 03760	Power Plug ARG