



Philips Domestic Appliances and Personal Care

# Service Manual

## PRODUCT INFORMATION

- Gum Protection System : The brush automatically flexes back when too much pressure is applied. Because of this signal, the user will develop a safe and efficient brushing technique.
- Active tip : Removes plaque between the teeth
- Number of brush heads included in fancy box : 1
- Colours : White/ grey
- Waterproof : Yes
- Anti rolling strip : To prevent the appliance from rolling away

## TECHNICAL DATA

- Voltage : 110-127 V; 200-240 V, 50-60 Hz
- Power consumption : 2.8 Watts
- Speed (top) : up to 15.000 brush strokes per minute
- Gum Protection System click at : 270 gr.
- Charging time (empty to full) : 16 hours
- Operating time (full to empty) :  $\pm$  25 minutes
- Battery type : NiCd

**Product meets the requirements regarding interference suppression on radio and TV.**

## SERVICE INFORMATION

### Hand unit tooth brush (1)

Never open the hand unit of the toothbrush because the unit is no longer watertight after it has been opened. Replace the entire unit in case of a defect.

For standardisation reasons, the hand unit of the HX 2535 is replaced by the hand unit of the HX 2510.

When discarding the hand unit, remove the built-in rechargeable battery.

The battery should be completely empty. For instructions p.t.o.

### Charging unit (2)

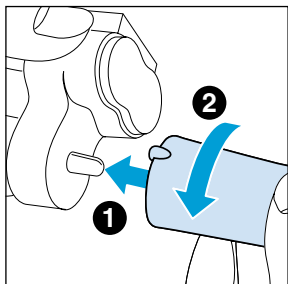
In case of a defective charging unit or damaged cord the complete charging unit must be replaced.

### Charging tips

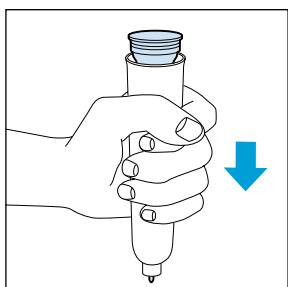
- **The appliance will only charge if the appliance is switched off.**
- Please note that the electricity supply to sockets in mirror cabinets over washbasins or shaver sockets in bathrooms may be cut off when the light is switched off.
- The toothbrush can be put back in the stand after use and left to charge continuously. However, to extend the lifetime of the battery proceed as follows:  
When the appliance is used for the first time, continue to use it until the battery is empty.  
Use the appliance in the normal way without recharging it between the brushing sessions.  
Recharge the appliance when the motor almost stops running.  
Repeat this procedure 3 times in a row every 6 months.

## INSTRUCTIONS TO REMOVE THE BATTERY

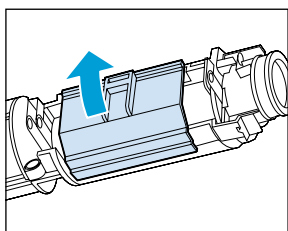
Pick up the charging unit and place the toothbrush on the pin. Turn the toothbrush anti-clockwise to unscrew the bottom of the toothbrush.



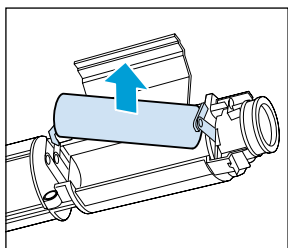
Turn the toothbrush upside down and press it down on a hard surface to remove the battery holder.



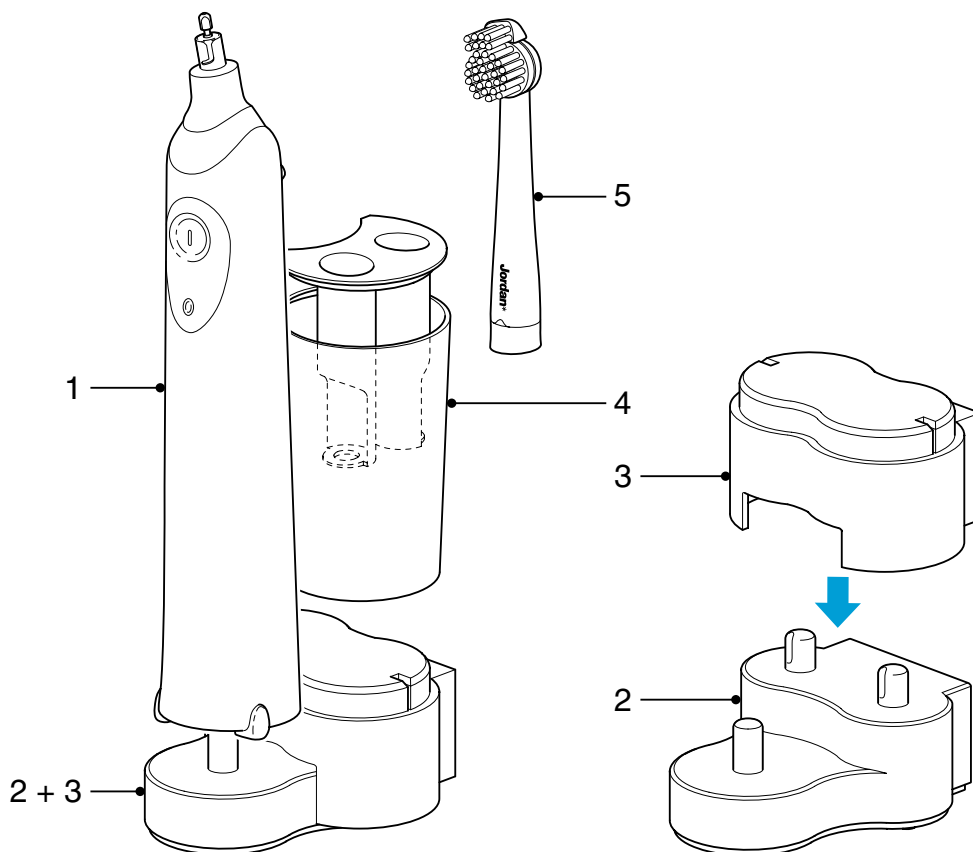
Open the lid of the battery holder by means of a screwdriver.



Lift the battery out of the battery holder by means of a screwdriver.



After the bottom has been unscrewed, the appliance may not be watertight anymore and the guarantee will become invalid.



Pos	Description	Service code
1	Hand unit (NiCd)	4203 035 75450
2	Stand 220 - 240 V, EURO plug	4203 035 75490
	Stand 220 - 240 V, UK plug	4203 035 75500
	Stand 220 V, Argentina	4203 035 75510
	Stand 220 - 240 V, Australia	4203 035 75520
	Stand 220 V, Korea	4203 035 75530
	Stand 110 - 127 V, Taiwan	4203 035 75540
3	Cover	4203 035 75560
4	Storage container	4203 035 75570
5	Brush head (2-pack)	8812 012 30020