

Service  
Service  
Service



Philips Domestic Appliances and Personal Care

# Service Manual

## PRODUCT INFORMATION

- Product meets the requirements regarding interference suppression on radio and television.
- After the product has been repaired, it should function properly and has to meet the safety requirements as laid down officially established at this moment.

## TECHNICAL INFORMATION

- Power consumption : 300 W
- Voltage and frequency : 220 - 240 V / 50 - 60 Hz
- Cord length : 150 cm
- Speed unloaded
  - speed 1 : 18.000 rpm
  - speed 2 : 20.000 rpm
  - speed 3 : 21.500 rpm
  - speed 4 : 22.500 rpm
- Volume beaker : 1.000 ml
- Volume chopper container : 250 ml
- Weight in F-box : 2.3 kg
- Dimensions F-box : 480 x 300 x 128 mm

## DISASSEMBLY AND RE-ASSEMBLY ADVISE

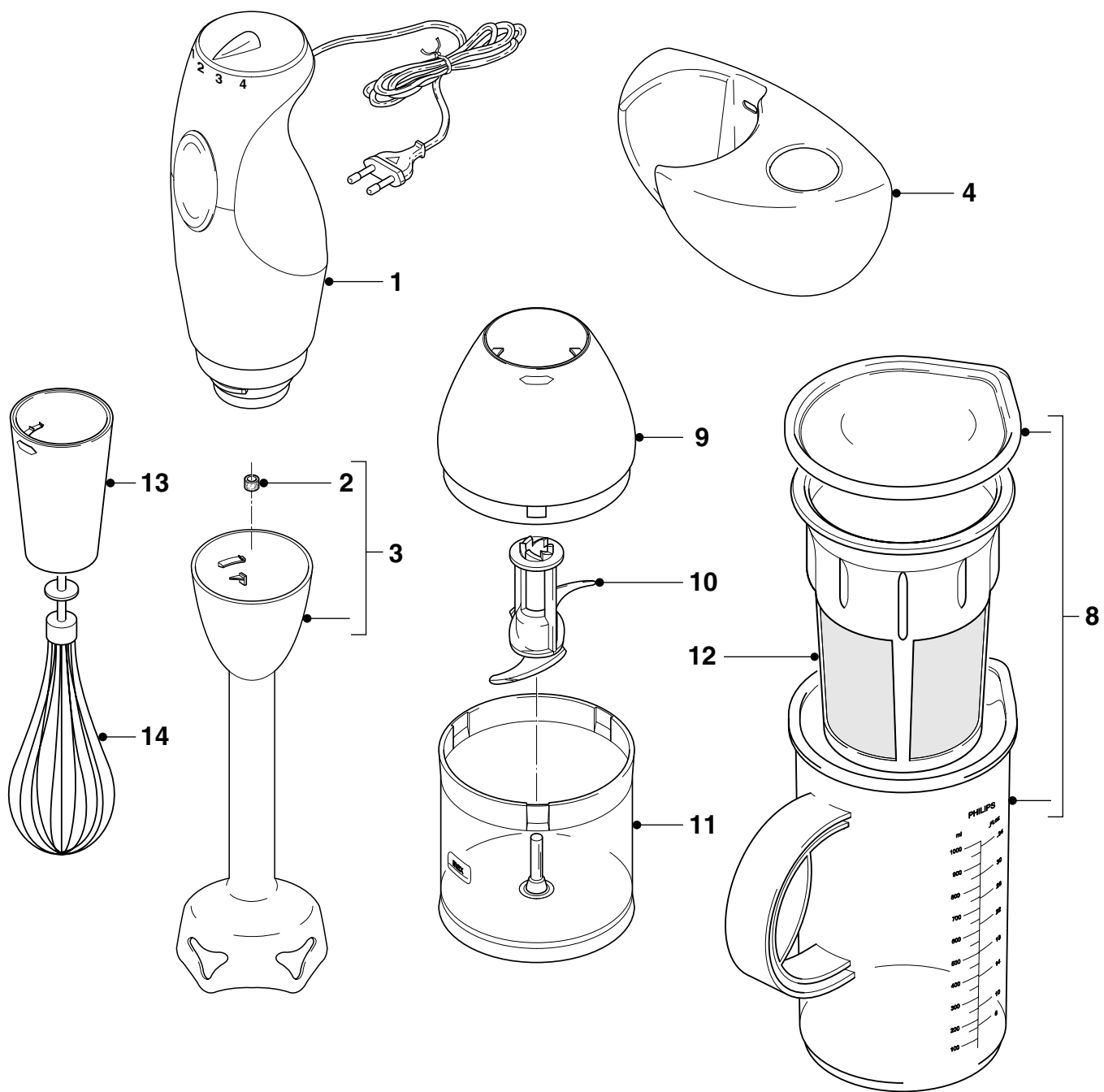
- No specific issues.

## REPAIR INSTRUCTION

- No specific issues.

## OPTIONAL (accessories)

- No specific issues.



Pos	Service code	Description
1	9965 000 17074	power unit 4 speed
2	9965 000 01713	rubber ring
3	9965 000 17068	metal bar
4	9965 000 17069	wall holder
8	9965 000 17075	beaker (1,0 L) and lid
9	9965 000 17071	chopper gear box

Pos	Service code	Description
10	9965 000 17072	chopping knife
11	9965 000 17073	chopping bowl
12	9965 000 17076	filter
13	9965 000 17077	balloon beater gear box
14	9965 000 01650	balloon beater