

Service Service Service



Domestic Appliances and Personal Care

Service Manual 4322 277 00196 is herewith cancelled

Service Manual

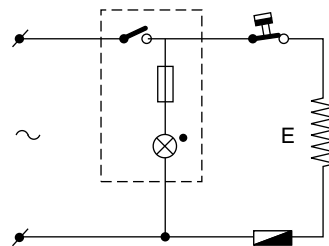
SAP Coding HD 7444/10

PRODUCT INFORMATION

Voltage : 100-230V
Frequency : 50-60Hz
Power consumption : 1100 watt
HD 7500 : 1200cc
Coloursetting : white/min. green

SERVICE INFORMATION

Thermostat switch-off temp : 140°C
Thermal fuse cut-off temp : 228°C



REPAIR INSTRUCTIONS

1. Electrical circuit

When the appliance does not work, check the electrical circuit. If the thermal fuse or thermostat prove defective, the complete pump unit has to be replaced.

2. De-scaling

If the water system is nearly or less clogged by scale then operate the coffeemaker a few times with vinegar or with a 10-15% solution of either vinegar-acid, citric acid or tartar-acid, into cold tap water.

Do not use other de-scaling agents as these may harm the appliance.

If this procedure does not restore the function, then switch off the coffeemaker when the acid has passed through during appr. 3 min. Keep the appliance in this condition overnight and continue/repeat the cleaning operation. After the de-scaling procedure, operate the coffeemaker twice with tap water in order to rinse away any residual substances.

3. Base removal

Besides two screws, two plastic snap connections have to be detached by means of using a simple screwdriver, as indicated on the base of the appliance.

Commercial trade number: HD 7956 (jug included lid)

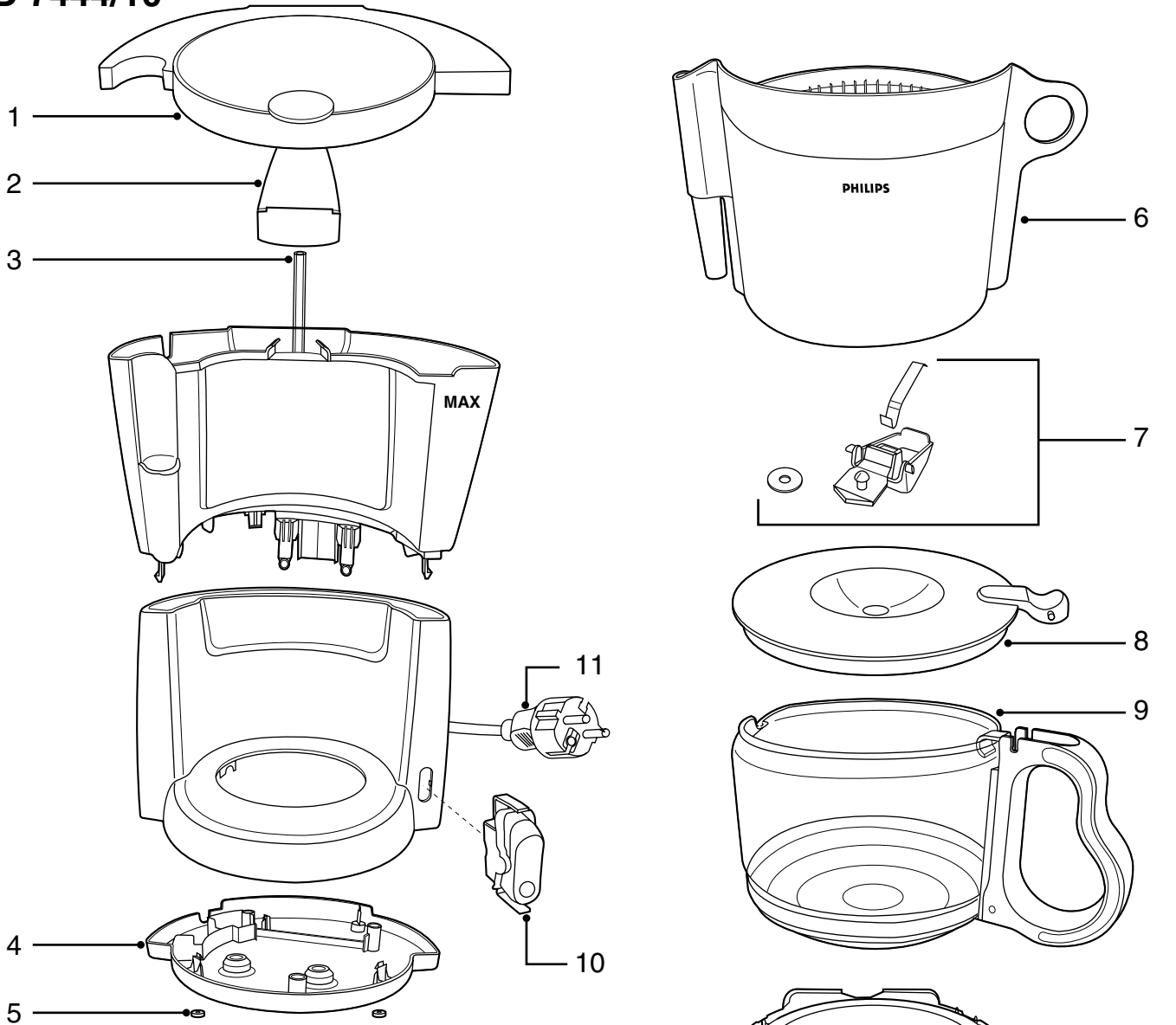
PRODUCTS MEETS THE REQUIREMENTS REGARDING INTERFERENCE SUPPRESSION ON RADIO AND TELEVISION.

- AFTER THE PRODUCT HAS BEEN REPAIRED IT SHOULD FUNCTION PROPERLY AND HAS TO MEET THE SAFETY REQUIREMENTS AS LAID DOWN OFFICIALLY ESTABLISHED AT THIS MOMENT.



PHILIPS

HD 7444/10



| | | | |
|----|----------------|-------------------------|----------|
| 1 | 4222 247 58800 | Tank lid | |
| 2 | 4222 247 59010 | Spout | |
| 3 | 4222 247 52530 | Spoutpipe | |
| 4 | 4222 247 58840 | Base | |
| 5 | 4222 447 05680 | Stud | |
| 6 | 4222 259 00490 | Filter printed | |
| 7 | 4222 259 00400 | Dripstop assy | |
| 8 | 4222 247 59020 | Jug lid | |
| 9 | 4222 259 01490 | Jug + lid | |
| 10 | 4222 246 15690 | Switch | |
| - | 4222 246 15720 | Switch | 100-120V |
| 11 | 4222 246 15310 | Cord set | EUR |
| - | 4222 246 15210 | Cord set | Taiwan |
| - | 4222 246 15330 | Cord set | UK |
| - | 4222 246 15250 | Cord set | S/A |
| - | 4222 246 24510 | Cord set | Japan |
| 51 | 4222 247 06440 | Hose piece | |
| 52 | 4222 259 20460 | Valve + hose piece assy | |
| 53 | 4222 247 58880 | Connecting piece | |
| 54 | 4222 247 06440 | Hose piece | |
| 55 | 4222 259 33970 | Basic pump module III | 230V |
| | 4222 259 33980 | Basic pump module III | 120V |
| | 4222 259 33990 | Basic pump module III | 100V |
| 56 | 4222 246 25640 | Wire assy | |
| 57 | 4222 245 71630 | Spring bpm III | |
| 58 | 4222 259 19960 | Thermostat | |
| 59 | 4222 246 25650 | Wire assy | |
| 60 | 4222 259 34210 | Fuse assy | |
| 61 | 4222 240 06290 | Leaf assy | |
| 62 | 4222 259 00751 | Hotplate assy | |
| 63 | 4222 248 25620 | Speednut | |

